



COMPANY PROFILE 2025



The sea \_\_\_\_\_ our responsibility

# GENERAL CARGO TERMINALS

[www.seatec-sarl.com](http://www.seatec-sarl.com)

Copyright © 2025 SEATEC sarl. All rights reserved

- 
- I. [About us](#)
  - II. [Company History](#)
  - III. [Projects Location](#)
  - IV. [Get in Touch with Us](#)
  - V. [Company Vision](#)
  - VI. [Capacity of the Company](#)
  - VII. [Our Projects](#)
    - 1. [Container Terminals](#)
    - 2. [General Cargo Terminals](#)
    - 3. [Cruise Terminals](#)
    - 4. [Oil & gas Terminals](#)
    - 5. [Industrial Ports](#)
    - 6. [Grain terminals](#)
    - 7. [Marinas](#)
    - 8. [Fishing Ports](#)
    - 9. [Naval Bases](#)
    - 10. [Service Ports](#)
    - 11. [Waterfronts](#)
    - 12. [Coastal Protections](#)
    - 13. [Beaches](#)
    - 14. [Mooring structures](#)
    - 15. [Dredging](#)
    - 16. [Lift structures](#)
    - 17. [Sealines](#)
    - 18. [Environmental Studies](#)
  - VIII. [Our Clients](#)

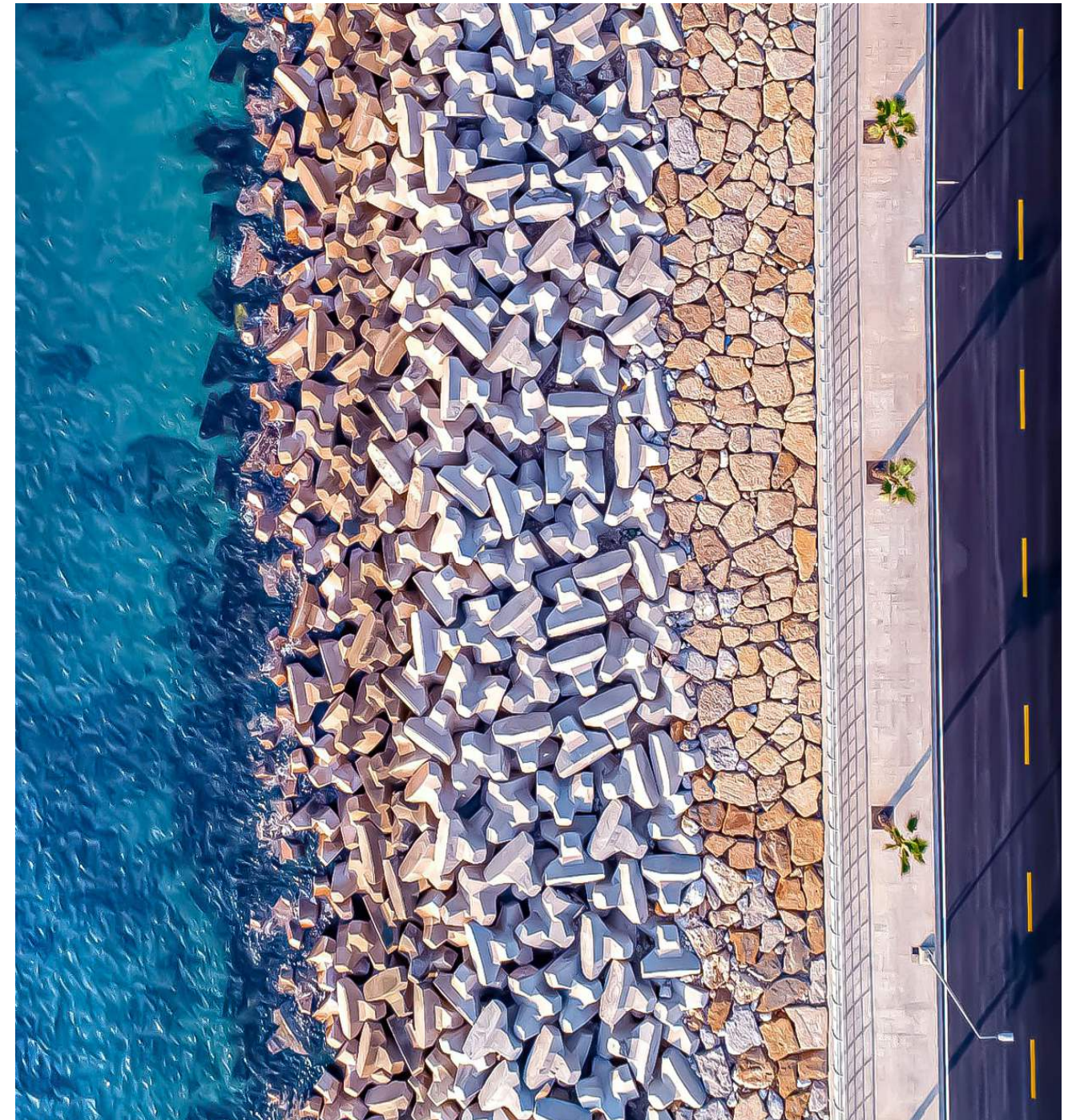
Press on Links to navigate to page

## SEATEC

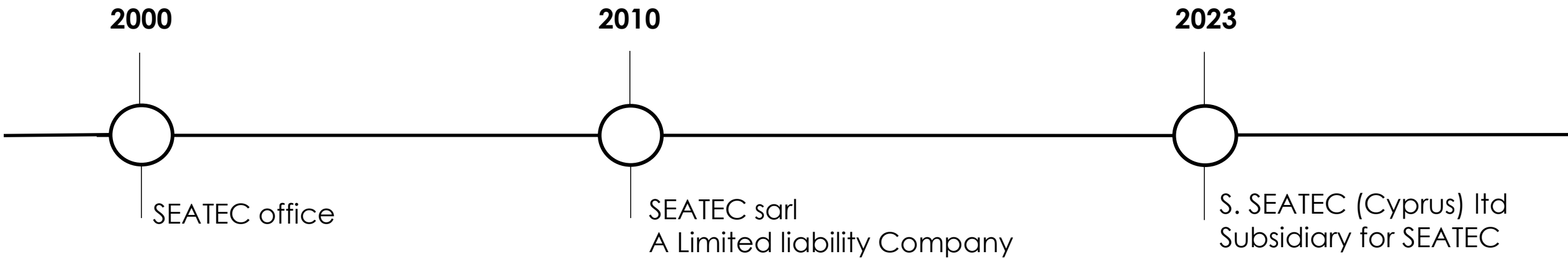
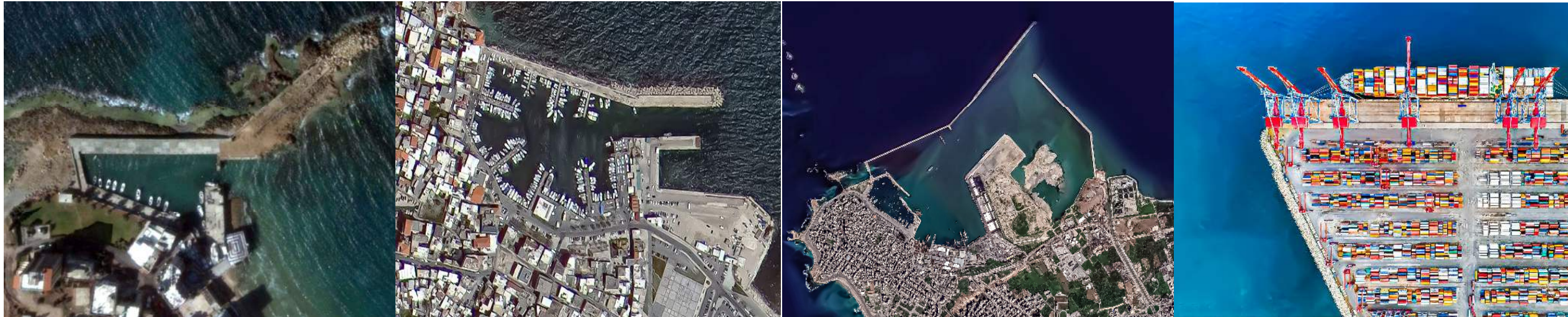
provides its clients with design and supervision services in coastal and port engineering, covering surveying, site investigation, master planning, numerical modeling, tender and detailed design, feasibility and EIA studies, permitting, construction planning, management and supervision.

Serving public as well as private sectors since 2000, SEATEC sarl is dedicated to give its clients the best engineering assistance.

SEATEC sarl operates in the EU territory through its subsidiary in Cyprus, S. SEATEC (Cyprus) Ltd.



# COMPANY HISTORY



# PROJECTS LOCATION



Countries <span style="color: red;">●</span>	
<b>Middle East</b>	<b>AFRICA</b>
Lebanon	Egypt
Jordan	Libya
Syria	Tunis
<b>GULF</b>	Algeria
UAE	Djibouti
KSA	Ivory Coast
Qatar	Cameroon
Oman	Nigeria
<b>ASIA</b>	<b>EUROPE</b>
India	Cyprus

## HEAD OFFICE

### SEATEC sarl

Beaini Center, 1st floor, Down Town,  
31 Ernest Renan St.,  
PC 4504 Byblos, LEBANON

Ph : +961 9 55 00 22  
Fax : +961 9 55 00 44  
Mob : +961 3 29 10 30  
Web : [www.seatec-sarl.com](http://www.seatec-sarl.com)  
E-mail : [seatec@seatec-sarl.com](mailto:seatec@seatec-sarl.com)

## SUBSIDIARY OFFICE

### S. SEATEC (CYPRUS) ltd

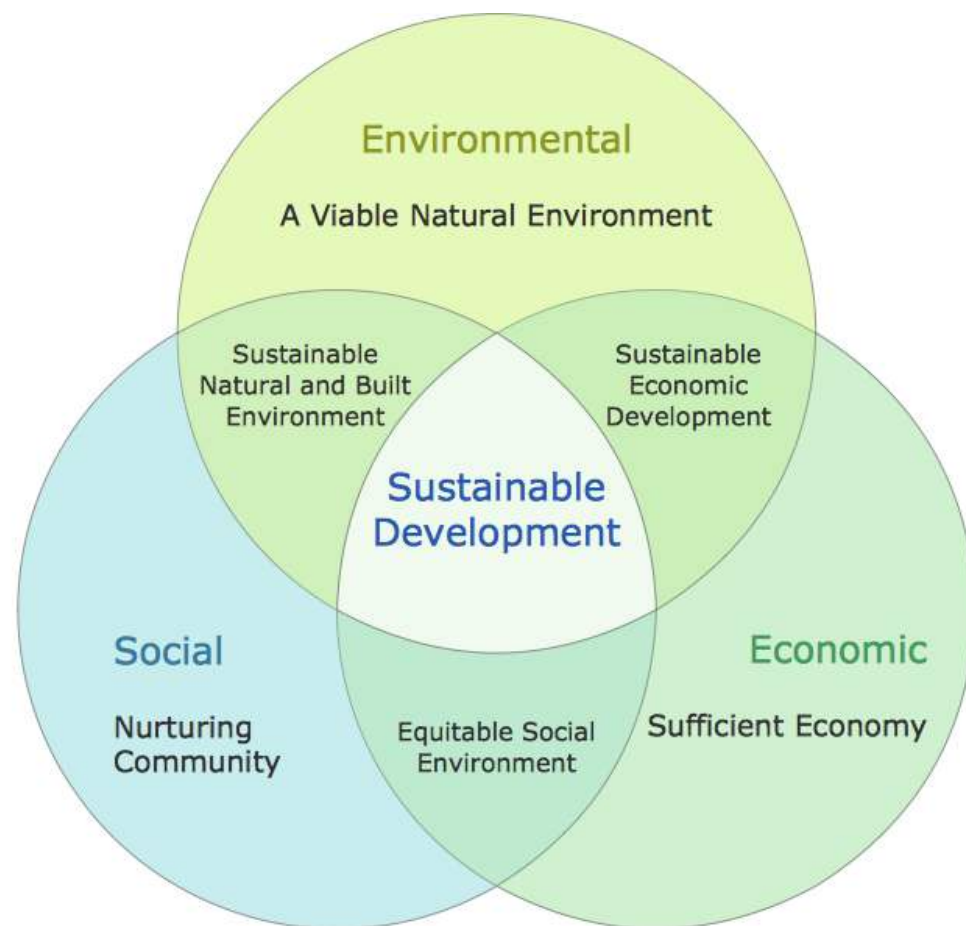
Michail Olympiou, 26 Dali,  
2540 Nicosia, CYPRUS



## VISION 01

### SUSTAINABLE ENGINEERING SOLUTIONS

*“Leading the way in creating sustainable and resilient engineering solutions that harmonize with nature and withstand the test of time”*



## VISION 02

### ECO-FRIENDLY AND GREEN PRACTICES

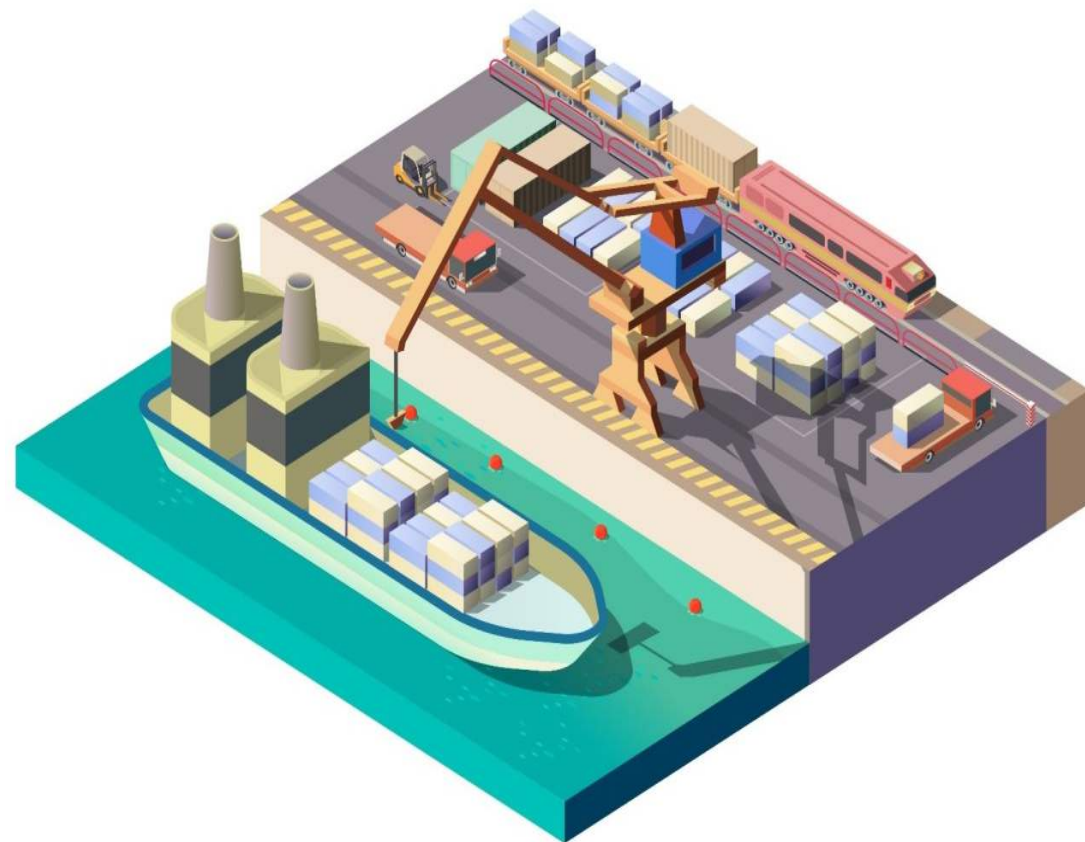
*“Pioneering eco-friendly and green solutions that preserve coastlines and promote a sustainable future for generations to come”*



## VISION 03

### SMART PORTS

*"Transforming ports into smart, efficient, and interconnected hubs that drive global trade and economic growth".*



## VISION 04

### INNOVATIVE COASTAL DEVELOPMENTS

*"Fostering innovative coastal developments that boost local economies and enhance the quality of life for coastal communities".*



## INTRO

### SERVICES

SEATEC sarl ([www.seatec-sarl.com](http://www.seatec-sarl.com)) is a multi-disciplinary engineering company, operating since 2000, mainly specialized in the design and supervision of coastal and ports projects, covering :

- Ports: commercial, cruise, marinas, fishing, industrial, naval bases...
- Specialized Terminals: Containers, general cargo, bulk, Agri bulk, oil and gas...
- Urban Waterfronts developments
- Coastal protections
- Dredging and reclamation works
- Beaches (protection and artificial nourishment)
- Offshore pipelines (outfalls, intake pipes...)
- Mooring structures, ship lifts
- Marine infra (Breakwaters, quay walls, platforms, slipways...)



## SERVICES

SEATEC offers a range of services through an experienced team in coastal and port engineering field :

- Site selection and evaluation
- Topographic and bathymetric survey
- Underwater inspection
- Rehabilitation of existing infrastructure
- Development of new infrastructure and facilities
- Master planning (future development) and phasing
- 3D presentations (views and videos)
- Feasibility studies
- Design optimization
- Design review /value engineering
- Preliminary and detailed design
- Execution drawings
- Numerical modelling
- Environmental Impact Assessment (EIA) studies
- Permitting and consents from relevant public authorities
- Tender documents
- Assistance to clients in selection of contractors



## SERVICES

- Supervision services, management and supervision of construction sites in accordance with health and safety guidelines, through an experienced team of site engineers, supervisors, surveyors and divers
- Supervising contractors, subcontractors and work activities
- Compliance of executed works with the relevant building regulations, quality standards
- Construction permit and with the specified technical documentation and guidelines
- Issuing of information and instructions on behalf of the client
- Validate of contractor's payments
- Hazards and risks assessment and Prevention of construction errors
- Carrying out regular inspections and raising safety concerns at the appropriate level
- Keeping construction on schedule, construction errors
- Completing records for site reports
- Resolving problems and implementing improvements
- Works handing over certificate



## OUR TEAM

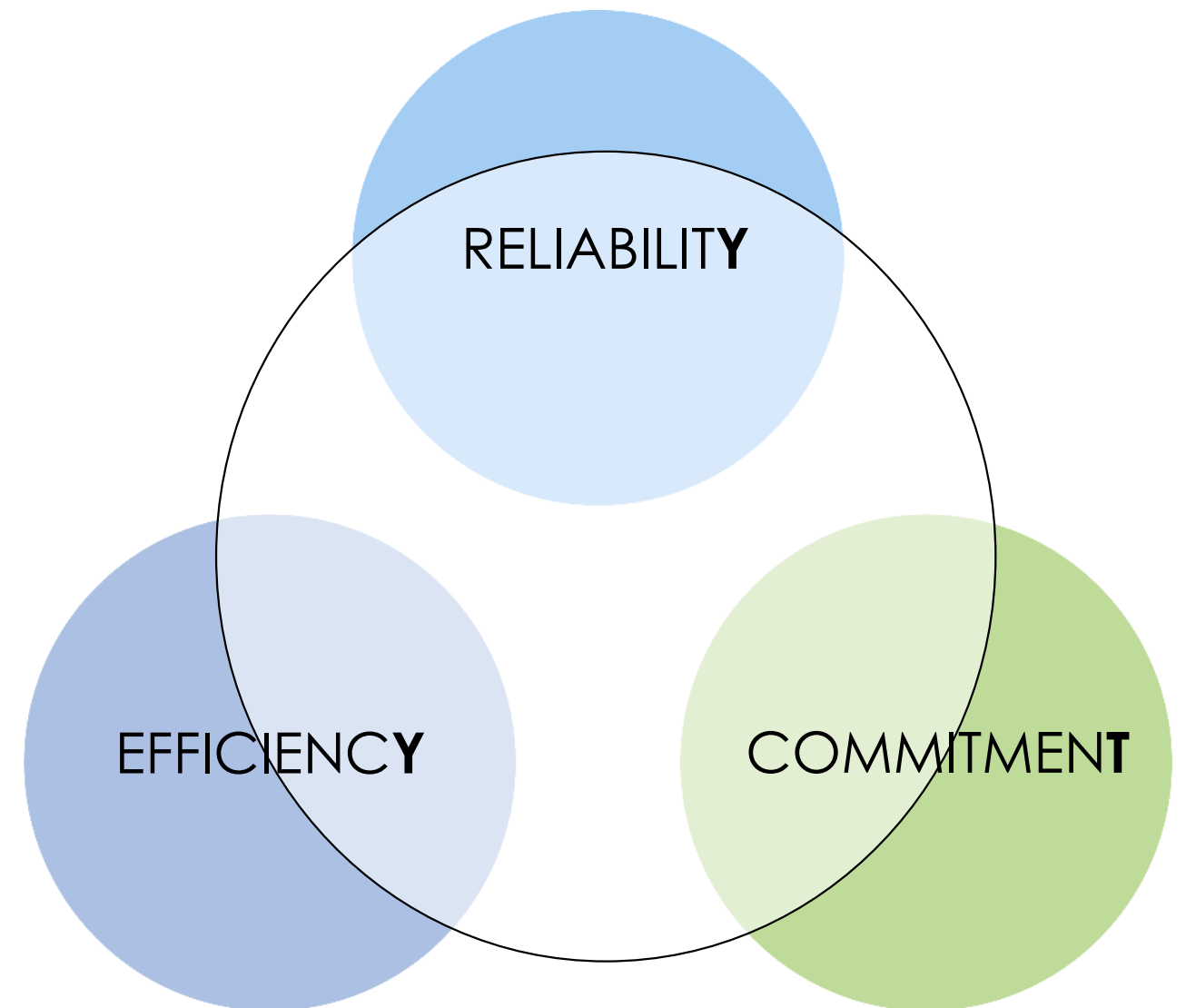
SEATEC have an experienced Team for in house design, covering all coastal and ports engineering aspects, geotechnical analysis, numerical modeling, works supervision..., keeping an excellent cooperation with leading European maritime and hydraulic laboratories for 2D/3D physical modeling.

A strong team spirit with the Client will be essential, working as part of a single entity rather than as competent individuals.

The team of experts is mostly composed of people involved in our recent projects, carefully selected for their:

- Experience in the field of expertise
- Efficiency
- Experience in working with each other
- Ability to advise both public and private Clients

Moreover, SEATEC can mobilize on short notice its technical resources when and where such expertise is needed.



## OUR NUMBERS



SINCE  
**2000**



COUNTRIES  
**+16**



CLIENTS  
**+50**



PROJECTS  
**+450**

## GENERAL CARGO TERMINALS



# TERMINAL EXPANSION OF PORT OF SAIDA

**Client** LEBANESE REPUBLIC  
Ministry of Public Works and Transport  
Saida Port Authority

**Location** LEBANON – Saida  
33°32'45" N  
35°21'44" E

**Consultant** SEATEC sarl

## Terminal Expansion of Port of Saida (PoS)

**Year** 2024  
Preliminary Design / Permitting

- Multi purpose area 1 (47,993m<sup>2</sup>)
- Multi purpose area 2 (21,019m<sup>2</sup>)
- Multi purpose area 3 (37,0130m<sup>2</sup>)
- Multi purpose area 4 (22,790m<sup>2</sup>)
- Multi purpose area 5 (37,273m<sup>2</sup>)
- Multi purpose area 6 (23,430m<sup>2</sup>)
- Parking and roads (59,974m<sup>2</sup>)
- Total area (249,609m<sup>2</sup>)
- Drawings / Decree / Permitting



*Ports / Container Terminals / General Cargo Terminals*

# DOUALA PORT EXPANSION (1/2)

**Client** Contracting Company N/A

**Location** CAMEROUN – Douala  
4°01'40" N  
9°40'18" E

**Consultant** SEATEC sarl

## Douala Port Expansion

**Year** 2024  
Conceptual Design

- Master Plan

### Container Terminal

- Quaywall (L=250m @-6.050m LAT) / Piling system
- Terminal platform (135,750m<sup>2</sup>)
- Terminal area for containers storage (57,000m<sup>2</sup>)
- Maintenance area (5,200m<sup>2</sup>)
- Trucks parking (17,000m<sup>2</sup>)
- Feeders area (1,620m<sup>2</sup>)
- Warehouses (1,620m<sup>2</sup>)
- Workshops (400m<sup>2</sup>)
- Offices (2,400m<sup>2</sup>)



*Ports / Container Terminals / General Cargo Terminals / Industrial Ports / Lift Structures / Slipways / Dredging*

## Douala Port Expansion

### General Cargo Terminal

- Quaywall (L=245m @-6.50m LAT) / Piling system
- Terminal platform (37,000m<sup>2</sup>)
- Warehouses (9,720m<sup>2</sup>)

### Ro-Ro Terminal

- Quaywall (L=100m @-6.50m LAT) / Piling system
- Terminal platform (6,900m<sup>2</sup>)

### Maintenance area

- Slipway
- Area (10,600m<sup>2</sup>)
- Workshops (615m<sup>2</sup>)

### Parking with photovoltaic pannels

- Area (29,800m<sup>2</sup>)

### Offices

- Area (57,200m<sup>2</sup>)
- Offices area (21,600m<sup>2</sup>)
- Basin and entrance channel dredging @-6.50m LAT.
- Drawings / BoQ

*Ports / Container Terminals / General Cargo Terminals / Industrial Ports / Lift Structures / Slipways / Dredging*



# DEBRIS & WRECKS REMOVAL AT THE PORT OF TRIPOLI (PoT)

17

**Client** LEBANESE REPUBLIC  
Ministry of Public Works and Transport  
Port of Tripoli Authority (PoTA)

**Location** LEBANON – Tripoli  
34°27'15" N  
35°49'34" E

**Consultant** SEATEC sarl

## Debris and Wrecks Removal at the Port of Tripoli (PoT)

**Year** 2023  
Design / Surveying

- Debris clearance and wrecks removal along the main general cargo quaywall (L~600m)
- Tender Documents / Drawings / BoQ

**Year** 2024  
Works Supervision

- Contractor : MAR contracting
- Duration : 5 months



*Ports / Surveying / Dredging / General Cargo Terminals*

# REHABILITATION OF QUAYWALL N7 PLATFORM AT PoT

18

**Client** LEBANESE REPUBLIC  
Ministry of Public Works and Transport  
Port of Tripoli Authority (PoTA)

**Location** LEBANON – Tripoli  
34°27'15" N  
35°49'34" E

**Consultant** SEATEC sarl

## Rehabilitation of Quaywall N7 Platform at the Port of Tripoli (PoT)

**Year** 2023  
Design / Surveying / Works Supervision

- Demolition of existing damaged concrete
- New RC platform (Slabs on Grade) ~4,800m<sup>2</sup>
- Rehabilitation of quaywall capping beam (L~256m)
- Tender Documents / Drawings / BoQ



*Ports / Surveying / General Cargo Terminals*

# BATHYMETRIC SURVEY AT TYRE PORT

**Client** LEBANESE REPUBLIC  
Ministry of Public Works and Transport  
Directorate General of Land and Maritime  
Transport

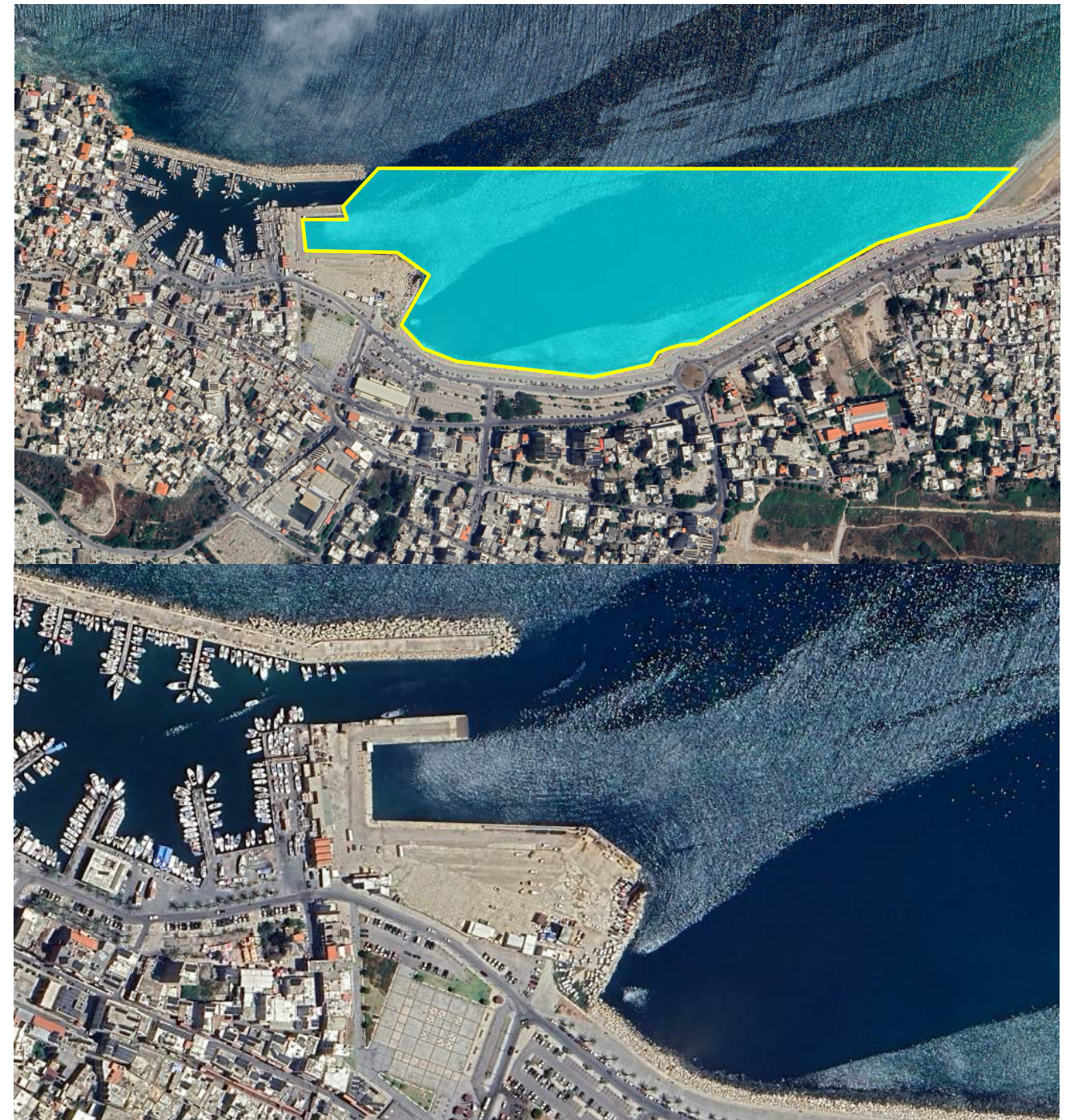
**Location** LEBANON – Tyre  
33°16'26" N  
35°11'53" E

**Consultant** SEATEC sarl

## Bathymetric Survey at Tyre Commercial Port

**Year** 2022  
Design / Surveying

- Topographic survey (4,000m2)
- Bathymetric survey (196,000m2)
- Drawings



**Ports / Surveying / General Cargo Terminals**

# FTZ / JETTY AT AKWA IBOM (1/2)

**Client** CONE ltd  
NDM Consultancy

**Location** NIGERIA - Akwa Ibom  
4°30'14" N  
7°35'11" E

**Consultant** SEATEC sarl

## FTZ / Jetty at Akwa Ibom

**Year** 2021  
Conceptual Design

The Free Trade Zone (FTZ) is situated in the south-western part of Akwa Ibom State and extends across Ikot Abasi, Eastern Obolo, Mkpata Enin, Ibeno, Onna and Oruk Anam Local Government Areas, covering an area of 500Km<sup>2</sup>.

The site will be developed into a world class Mega Industrial City, with a Free Trade Zone which will consist of a multipurpose jetty for shipment of general goods, Agri bulk cargoes, ferry services, ro-ro services, oil and gas logistics and coastal supply of petroleum products.

*Ports / Coastal Protections / Revetments / Mooring structures / Dolphins / Dredging / **General Cargo Terminals** / Industrial Ports / Oil & Gas Terminals / Container Terminals / Service Ports*



## FTZ / Jetty at Akwa Ibom

### Conceptual Design

1. Assessment of existing studies and design report

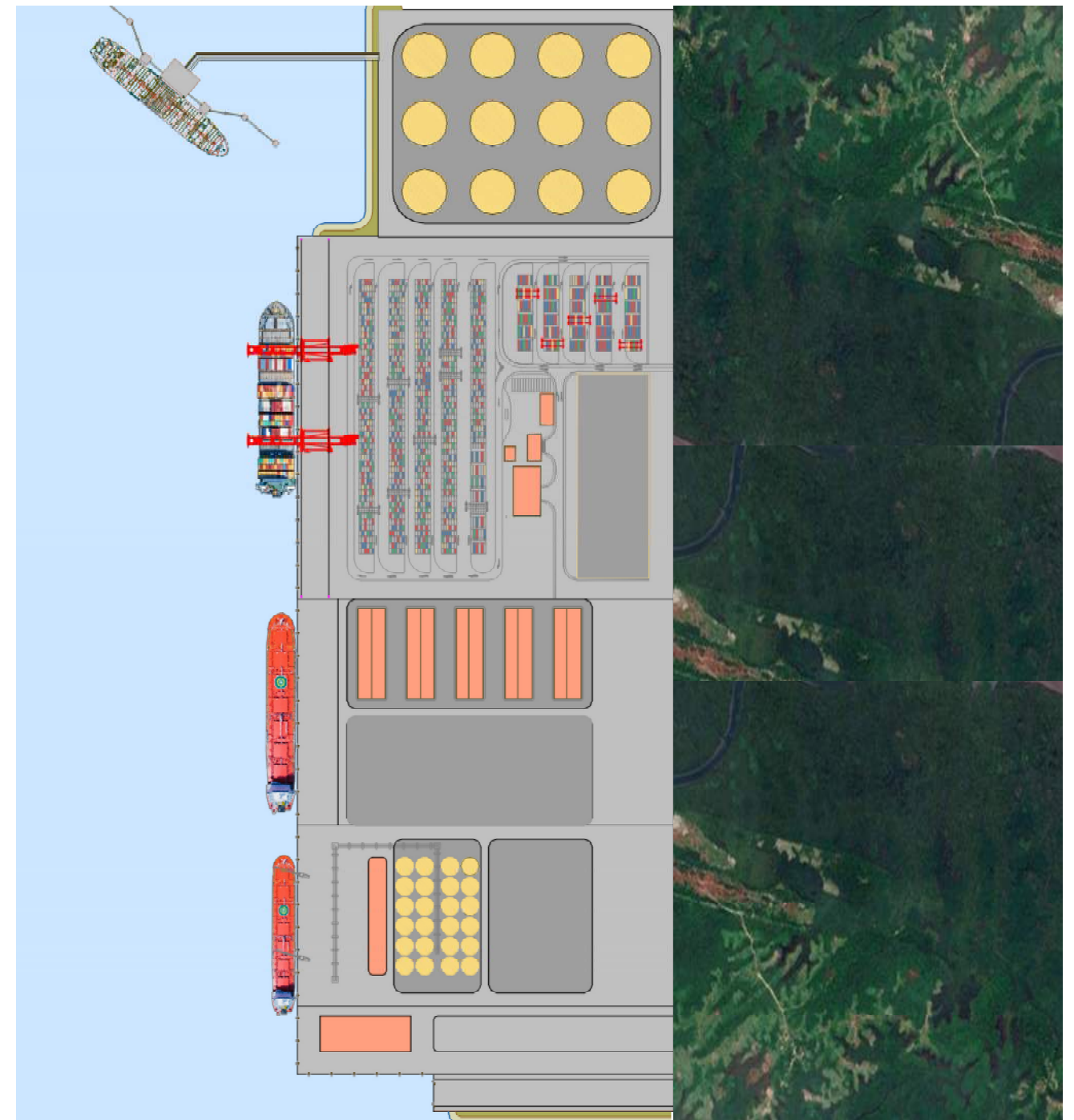
1. New conceptual layout / master plan of the FTZ:

- Petroleum and Energy District
- Industrial District
- Commercial District
- Central Business District
- Residential District
- Recreational and Eco-tourism District
- Agro-allied District

3. FTZ multipurpose jetty:

- Oil and Gas Terminal (81,000m<sup>2</sup> tank farm / Unloading Fuel Jetty L~250m @-12.00m)
- Container Terminal (166,000m<sup>2</sup> / Quaywall L~400m @-12.00m)
- General Cargo Terminal (103,000m<sup>2</sup> / Quaywall L~250m @-12.00m)
- Agri-bulk Terminal (83,000m<sup>2</sup> / Quaywall L~200m @-12.00m)
- Ferry Terminal (42,000m<sup>2</sup> / Quaywall L~75m @-8.00m)

**Ports** / Coastal Protections / Revetments / Mooring structures / Dolphins / Dredging / **General Cargo Terminals** / Industrial Ports / Oil & Gas Terminals / Container Terminals / Service Ports



# PORT OF BEIRUT MASTER PLAN

**Client** Ministry of Public Works and Transport

**Location** LEBANON – Beirut  
33°54'10" N  
35°31'03" E

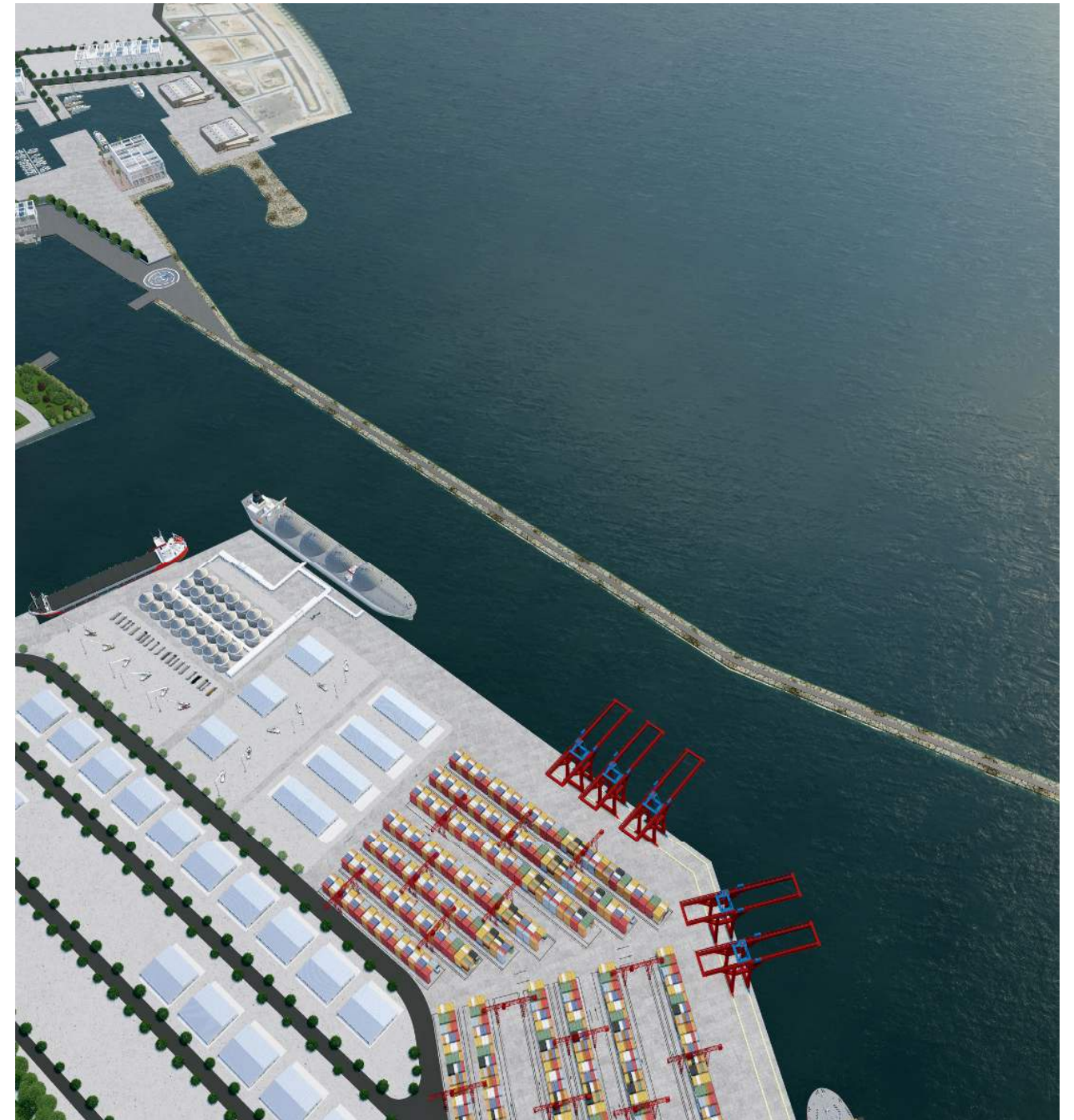
**Consultant** SEATEC sarl

## Port of Beirut Master Plan

**Year** 2022 – 2023  
Conceptual Design

- New Master plan of the Port (Rehabilitation and reconstruction) following the August 4<sup>th</sup> blast
- LAF Naval base (83,842m<sup>2</sup>)
- Ro-Ro Terminal (76,239m<sup>2</sup>)
- General Cargo Terminal (76,612m<sup>2</sup>)
- SEZ (194,610m<sup>2</sup>)
- Grain Terminal (76,338m<sup>2</sup>)
- Container storage (63,137m<sup>2</sup>)
- Container Terminal (492,378m<sup>2</sup>)
- Administration (92,332m<sup>2</sup>)
- Marina (88,908m<sup>2</sup>)
- Investors area (446,918m<sup>2</sup>)
- Public space / Memorial area (70,148m<sup>2</sup>)
- Main entrance (28,511m<sup>2</sup>)
- Railway station (84,982m<sup>2</sup>)

*Ports / Waterfronts / General Cargo Terminals / Container Terminals / Grain Terminals / Naval Bases / Marinas*



**Client** LEBANESE REPUBLIC  
Ministry of Public Works and Transport  
Directorate General of Land and Maritime Transport

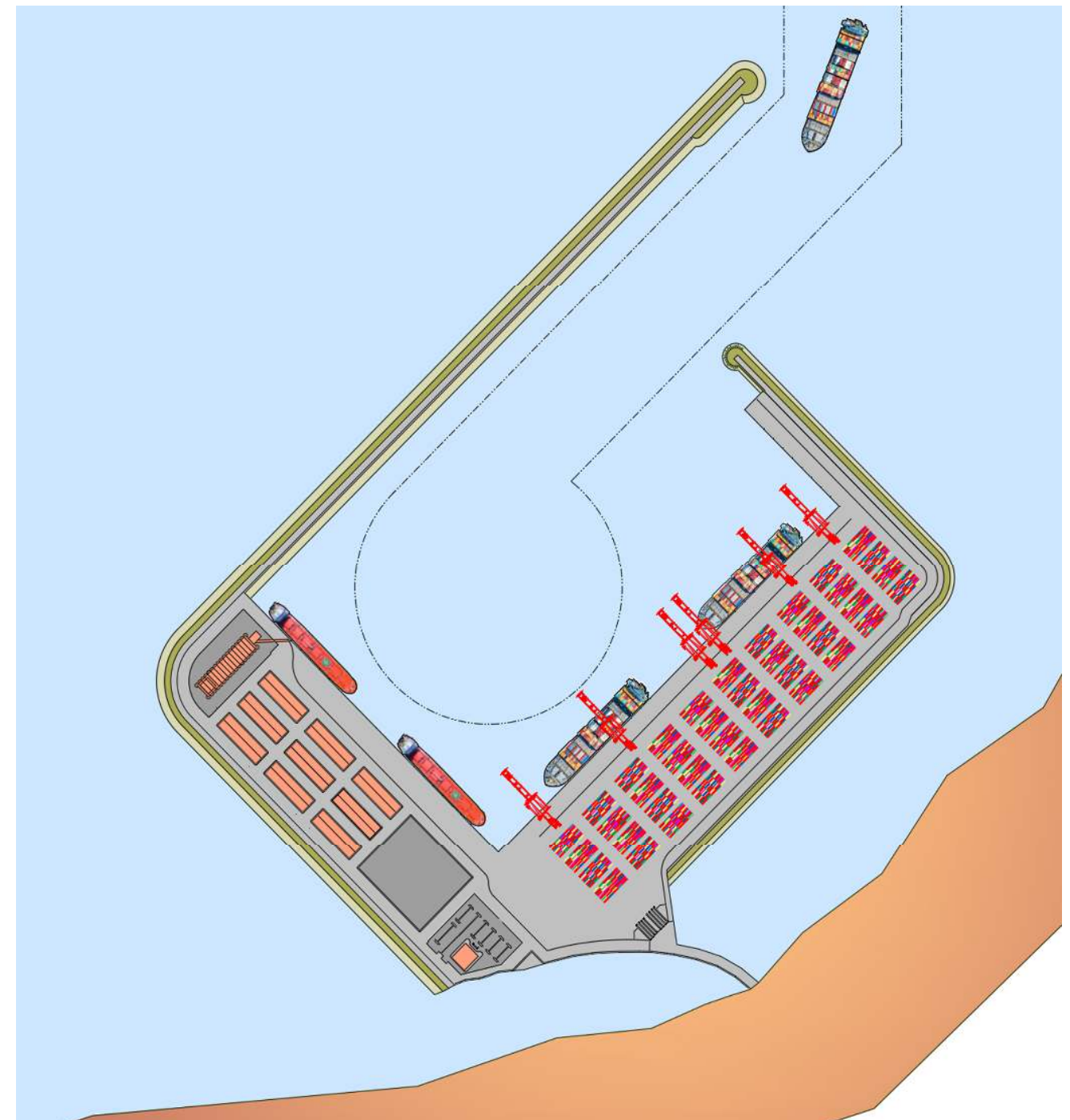
**Location** LEBANON – Naqoura  
33°7'36" N  
35°8'37" E

**Consultant** SEATEC sarl

## Naqoura Commercial Port

**Year** 2018  
Preliminary Design

- Container Terminal / General Cargo Terminal) for panamax container ships (LOA~260m / 60,000 DWT) and general cargo ships (LOA~225m / 40,000 DWT)
- Master Plan
- Main Breakwater (Rubble mound type, L=2,302m @max -15.00m, core material, rocky filter and 6,9 and 12m<sup>3</sup> concrete Accropodes blocks Type II)
- Secondary Breakwater (Rubble mound type, L=1,078m @max -12.00m, core material, rocky filter and 6 and 9m<sup>3</sup> concrete Accropodes blocks Type II)
- RC Crown walls



*Ports / General Cargo Terminals / Container Terminals / Grain Terminals*

## Naqoura Commercial Port

### Container Terminal

- Quaywall (L=900m @-15.00m MSL) / Precast concrete blocks (Gravity QW)
- Terminal platform (210,000m<sup>2</sup>)
- 6 to 10 gantry cranes
- Estimated container stacks (40)

### General Cargo Terminal

- Quaywalls (L=925m @-15.00m MSL) / Precast concrete blocks (Gravity QW)
- Terminal platform (170,000m<sup>2</sup>)
- 9 warehouses (3,000m<sup>2</sup> / unit) over 27,000m<sup>2</sup>
- Grain silos (120,000T) over 15,000m<sup>2</sup>
- Open air storage yard (22,000m<sup>2</sup>)

### Port administration

- 4 stories building (4,880m<sup>2</sup>)
- Car parking (15,000m<sup>2</sup>)
- Reclaimed area (611,000m<sup>2</sup>)
- Water body (610,000m<sup>2</sup>)
- Basin and entrance channel dredging @-15.00m MSL
- Drawings / BoQ



*Ports / General Cargo Terminals / Container Terminals / Grain Terminals*

**Client** CCIAT (Chamber of Commerce Industry and Agriculture at Tripoli and North Lebanon)

**Location** LEBANON - North Lebanon -  
Tripoli city to Klayaat airport  
34°30'30"N  
35°56'50"E

**Consultant** SEATEC sarl

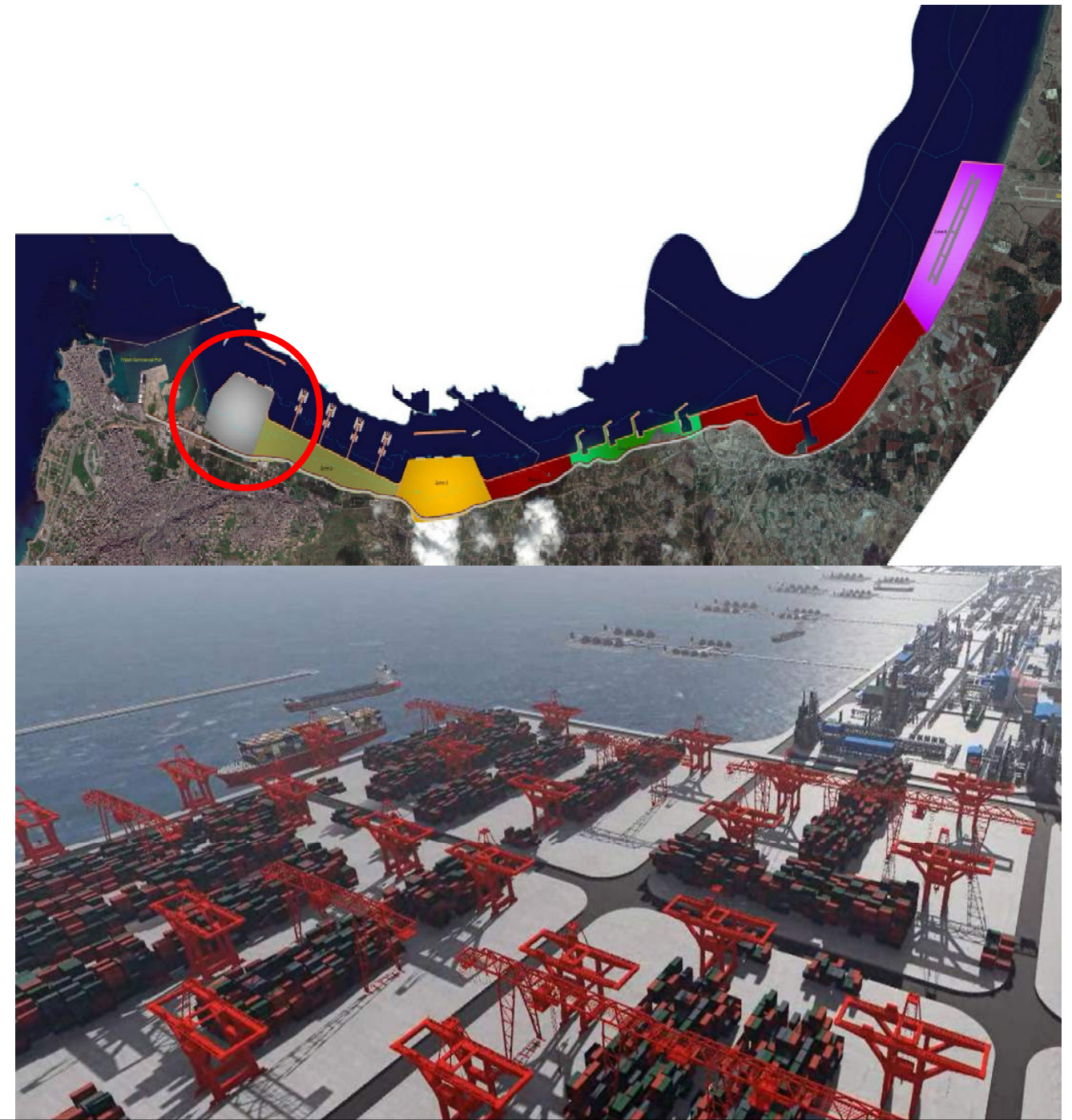
**RECNOR (Reclamation at North Lebanon)  
Industrial zone from the Port of Tripoli to Klayaat Airport (23km  
of shoreline)**

**Year** 2018 – 2019 – 2020 – 2021  
Conceptual Design / Permitting

Zone 1 (1,750,000m<sup>2</sup>)

- Zone 1A (707,000m<sup>2</sup>) New container terminal
- Detached main breakwater (Rubble mound type, L=1,000m @max -15.00m MSL, core material, rocky filter and concrete Accropodes blocks)
- Extension of the Port main breakwater (Rubble mound type, L=1,000m @max -20.00m MSL, core material, rocky filter and concrete Accropodes blocks)

*Ports / Waterfronts / Permitting / General Cargo Terminals / Industrial Ports / Oil & Gas Terminals / Fishing Ports / Container Terminals / Service Ports / Coastal Protections / Revetments / Mooring Structures / Dolphins*



## REC NOR

- Main quaywall (L=1000m @-15.00m MSL) / sheetpiles QW

### Zone 1B (326,000m<sup>2</sup>)

- Reclaimed area / extension of Tripoli Port existing container terminal

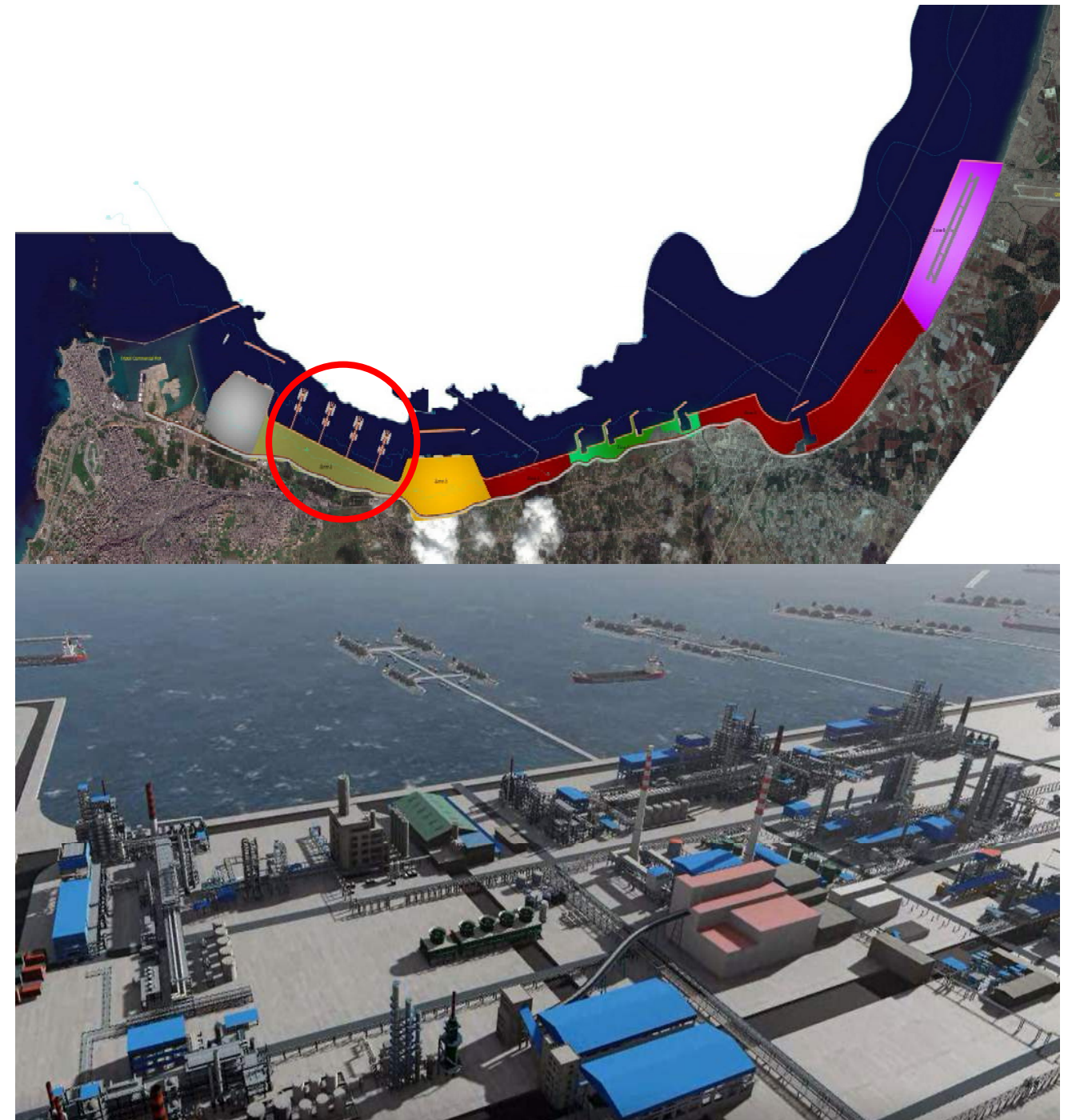
### Zone 1C (716,000m<sup>2</sup>)

- Reclaimed area / new special economic zone (SEZ)

### Zone 2 (1,857,000m<sup>2</sup>) Oil and gas terminal

- 4 Jetties for tankers berthing (Metallic structure on piles, L=870m)
- Berths (L=140m @-12.00m MSL, Nbr 8) / Breasting and Mooring dolphins
- Berths (L=225m @-18.00m MSL, Nbr 8) / Breasting and Mooring dolphins
- Reclaimed platforms for oil, gas and petrochemical industry, refineries, fuel storage tanks...
- Berthing capacity (16 tankers)

*Ports / Waterfronts / Permitting / **General Cargo Terminals** / Industrial Ports / Oil & Gas Terminals / Fishing Ports / Container Terminals / Service Ports / Coastal Protections / Revetments / Mooring Structures / Dolphins*



## RECNOR

Zone 3 (2,147,000m<sup>2</sup>) General cargo terminal and industrial zone

- Detached main breakwater (Rubble mound type, L=1,200m @max -15.00m MSL, core material, rocky filter and concrete Accropodes blocks)
- Main quaywall (L=1500m @-10.00m MSL) / Precast concrete blocks (Gravity QW)
- Terminal platforms for import of raw materials necessary for industries
- Industrial zone for miscellaneous industrial plants and storage

Zone 4 (936,000m<sup>2</sup>) Miscellaneous industries / platforms

- Reclaimed platforms
- Coastal protection
- Industrial zone for miscellaneous industrial plants and storage

Zone 5 (990,000m<sup>2</sup>) Special industries with berths

- Reclaimed platforms
- Special industries (clinker, coal...) with related berths

*Ports / Waterfronts / Permitting / **General Cargo Terminals** / Industrial Ports / Oil & Gas Terminals / Fishing Ports / Container Terminals / Service Ports / Coastal Protections / Revetments / Mooring Structures / Dolphins*



## RECNOR

Zone 6 (938,000m<sup>2</sup>) Oil and gas offshore platforms services

- Reclaimed platforms for service of offshore oil and gas platforms
- Storage of equipment, related maintenance and industry facilities
- Port for tug and service boats

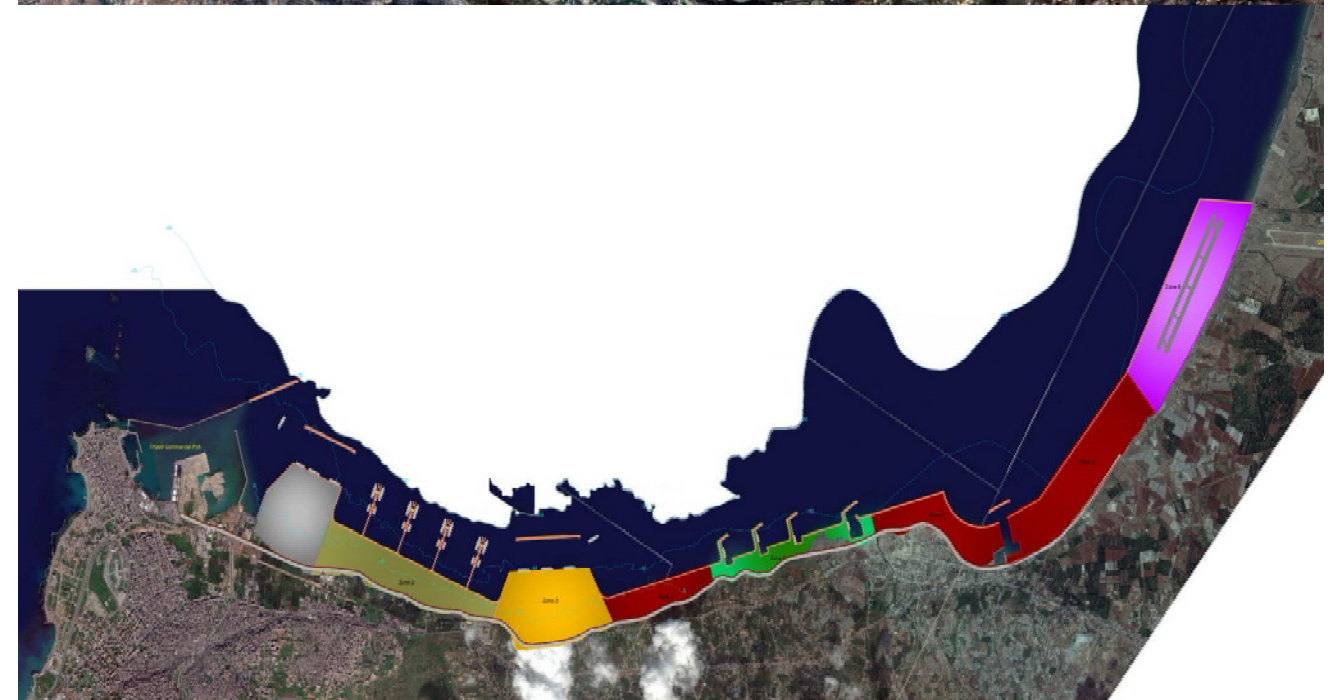
Zone 7 (3,054,000m<sup>2</sup>) Miscellaneous industries and fishing

- Reclaimed platforms
- Miscellaneous industries
- Fishing industries
- Extension of Abdeh Fishing Port

Zone 8 (4,178,000m<sup>2</sup>) Airport extension / services

- Extension of existing Klayaat Airport
- New runway
- Auxiliary services in neighboring platforms (hospitals, hotels...)
- Total reclaimed areas (16,096,000m<sup>2</sup>)
- Drawings / Presentation / Permitting

*Ports / Waterfronts / Permitting / **General Cargo Terminals** / Industrial Ports / Oil & Gas Terminals / Fishing Ports / Container Terminals / Service Ports / Coastal Protections / Revetments / Mooring Structures / Dolphins*



# SAIDA RECLAIMED AREA

**Client** LEBANESE REPUBLIC  
Ministry of Public Works and Transport  
Directorate General of Land and Maritime Transport

**Location** LEBANON – Saida  
33°32'45" N  
35°21'44" E

**Consultant** SEATEC sarl

**Master Plan / Zoning for the Reclaimed area in the vicinity of Saida Commercial Port (505,452 m2)**

**Year** 2017  
Design / Surveying

- Container and General Cargo (53,000m2)
- Grain silo (23,000m2)
- Special economic zone 1 (12,000m2)
- Special economic zone 2 (7,000m2)
- Open storage yard for cars (18,500m2)
- Oil and gas with sealine and offshore berth (59,500m2)
- Public spaces (28,754m2)
- Landfill area (70,000m2)
- Waste water treatment plant (8,500m2)
- Commercial area (50,750m2) Plots (195,500m2)
- Drawings / Decree / Master Plan

**Ports / Container Terminals / General Cargo Terminals / Grain Terminals / Oil & Gas Terminals / Sealines / Offshore Pipelines / Waterfronts / Mooring Structures / CBM**



# MOORING DOLPHINS AT THE PORT OF TRIPOLI (PoT)

30

**Client** LEBANESE REPUBLIC  
Ministry of Public Works and Transport  
Port of Tripoli Authority (PoTA)

**Location** LEBANON – Tripoli  
34°27'39" N  
35°49'48" E

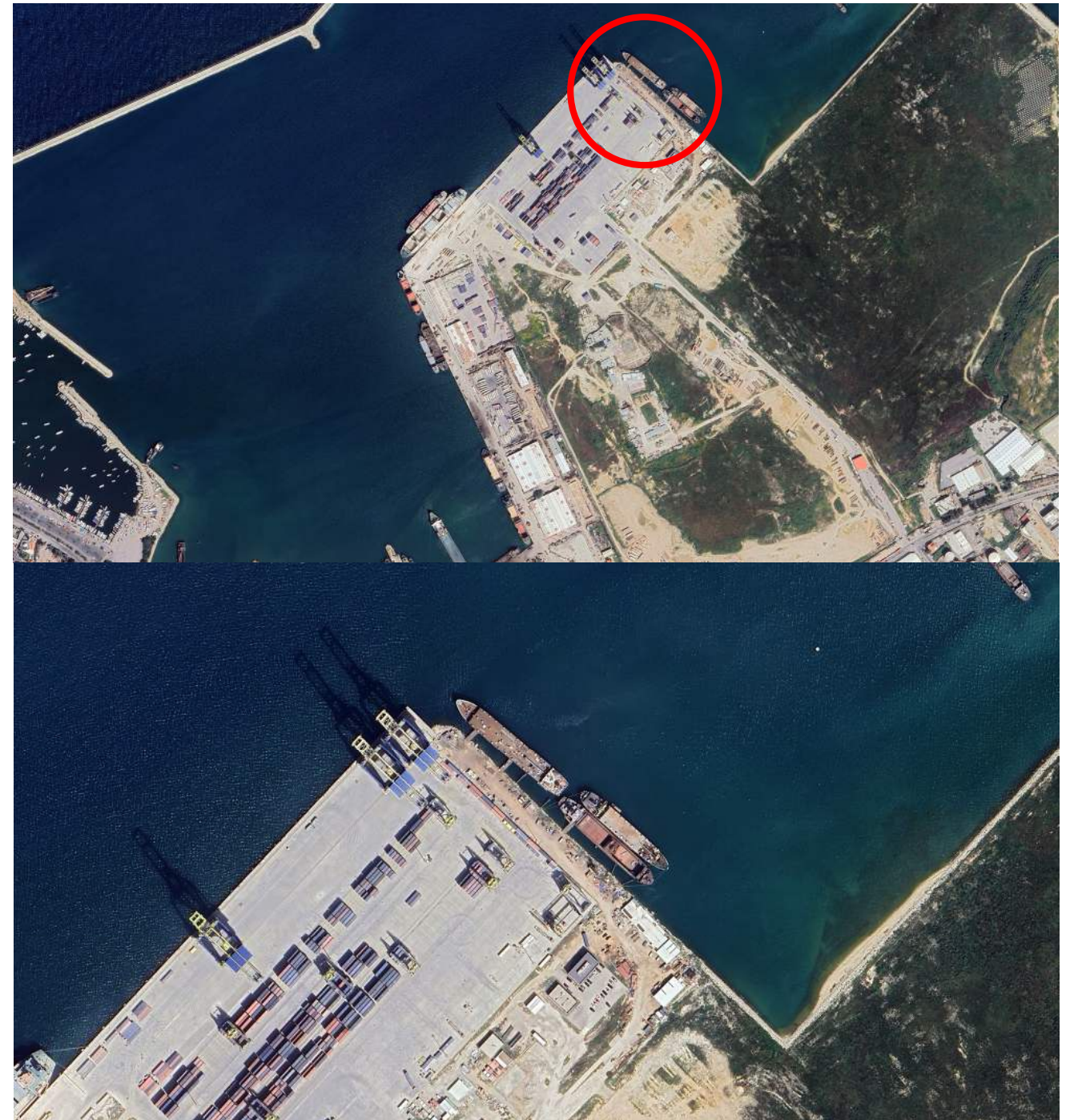
**Consultant** SEATEC sarl

## Mooring Dolphins at the Port of Tripoli (PoT)

**Year** 2017  
Design / Surveying / Supervision

- 8 mooring piles (OD1250mm, L~18.00m) for temporary mooring of 8000 DWT ships
- Topographic survey
- Bathymetric survey (10,000m<sup>2</sup>)
- Tender Documents / Drawings / BoQ
- Works Supervision

*Ports / Surveying / General Cargo Terminals / Container Terminals / Service Ports  
/ Mooring Structures / Dolphins*



# PAPN CONGO TERMINAL

**Client** JICHI OFFSHORE GROUP  
**Location** Republic of the CONGO – Pointe Noire  
4°46'52" S  
11°50'1" E  
**Consultant** SEATEC sarl

## PAPN Congo General Cargo Terminal

**Year** 2014 - 2015 - 2016  
Design / Permitting

- Concession agreement proposal for PAPN (Port Autonome de Pointe Noire - Congo) by JICHI for the execution / operation of a general cargo terminal, capable of berthing two 30,000 DWT ships, along a 450m quaywall @-13.00m, serving a platform of (450x120)m
- Main quaywall (piles/sheetpiles, L=450m @-13.00m MSL)
- Mobile Harbor crane Liebherr LHM320 104T max capacity of bulk handling
- Access channel and maneuvering area @-13.00m
- Dredging works
- Marine accessories (Mooring bollards, fenders...)
- Reclaimed area (54,000m<sup>2</sup>) and asphalted platforms
- Design and concession report to PAPN administration / Drawings / BoQ / Permitting

*Ports / Dredging / Permitting / General Cargo Terminals*



# DREDGING & WRECKS REMOVAL at PoT

**Client** LEBANESE REPUBLIC  
Ministry of Public Works and Transport  
Port of Tripoli Authority (PoTA)

**Location** LEBANON – Tripoli  
34°27'15" N  
35°49'34" E

**Consultant** SEATEC sarl

## Dredging and Wrecks removal at the Port of Tripoli (PoT)

**Year** 2010  
Design / Surveying

- Dredging Works and miscellaneous wrecks removal along the main general cargo quaywall
- Topographic survey
- Bathymetric survey (32,000m<sup>2</sup>)
- Dumping of dredged materials in selected marine disposal areas using split barges
- Underwater inspection with divers
- Tender Documents / Drawings / BoQ

**Year** 2011  
Works Supervision

- Contractor : Khoury Contracting Company (KCC)
- Duration : 3 months

*Ports / Surveying / Dredging / General Cargo Terminals*



**Client** LEBANESE REPUBLIC  
Ministry of Public Works and Transport  
Port of Tripoli Authority (PoTA)

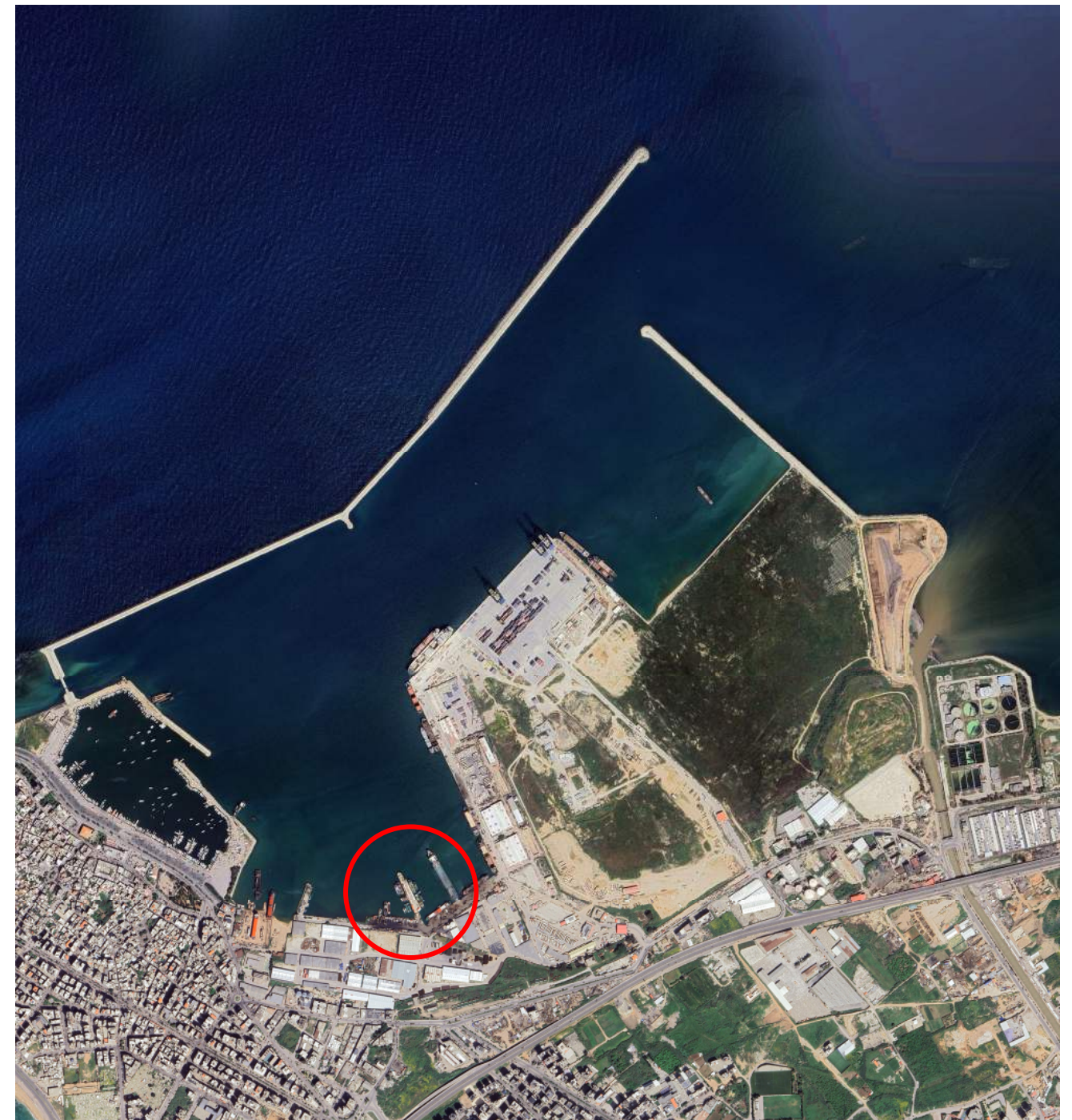
**Location** LEBANON – Tripoli  
35°49'34" N  
35°49'28" E

**Consultant** SEATEC sarl

## Mooring and breasting dolphins at the Port of Tripoli (PoT)

**Year** 2010  
Design / Surveying

- 3 mooring dolphins for tug boats
- 14 mooring bollards onshore
- Marine accessories (cylindrical fenders)
- Topographic survey
- Bathymetric survey (23,000m<sup>2</sup>)
- Drawings / BoQ



*Ports / Surveying / General Cargo Terminals / Service Ports / Mooring Structures / Dolphins*

# MOORING DOLPHINS AT THE PORT OF TRIPOLI (PoT)

34

**Client** LEBANESE REPUBLIC  
Ministry of Public Works and Transport  
Port of Tripoli Authority (PoTA)

**Location** LEBANON – Tripoli  
34°27'6" N  
35°49'28" E

**Consultant** SEATEC sarl

## Mooring Dolphins at the Port of Tripoli (PoT)

**Year** 2009  
Design

- Two mooring dolphins for tug boats
- Marine accessories (Bollards, cylindrical fenders)
- Drawings / Specifications / BoQ



*Ports / Surveying / General Cargo Terminals / Service Ports / Mooring Structures / Dolphins*

# EXTENSION OF QUAY N7 AT THE PORT OF TRIPOLI (PoT) (1/2)

35

**Client** LEBANESE REPUBLIC  
Ministry of Public Works and Transport  
Port of Tripoli Authority (PoTA)

**Location** LEBANON – Tripoli  
34°27'3" N  
35°49'31" E

**Consultant** SEATEC sarl

## Extension of Quaywall N7 at the Port of Tripoli (PoT)

**Year** 2009  
Design / Surveying

- Quaywall extension (L=64m @-8.75m MSL) / Underwater and precast blocks (Gravity QW) for 10,000 DWT ships
- RC capping beam
- Reclaimed area and RC platforms (1,250m<sup>2</sup>)
- Anti scour precast concrete slabs at quaywall toe
- Dredging for quaywall foundation and ship berth
- Marine accessories (100T Bollards, cylindrical fenders)
- HDPE pipes installation / manholes
- Topographic survey (1,600m<sup>2</sup>)
- Bathymetric survey (3,200m<sup>2</sup>)
- Tender Documents / Drawings / BoQ



*Ports / Surveying / General Cargo Terminals*

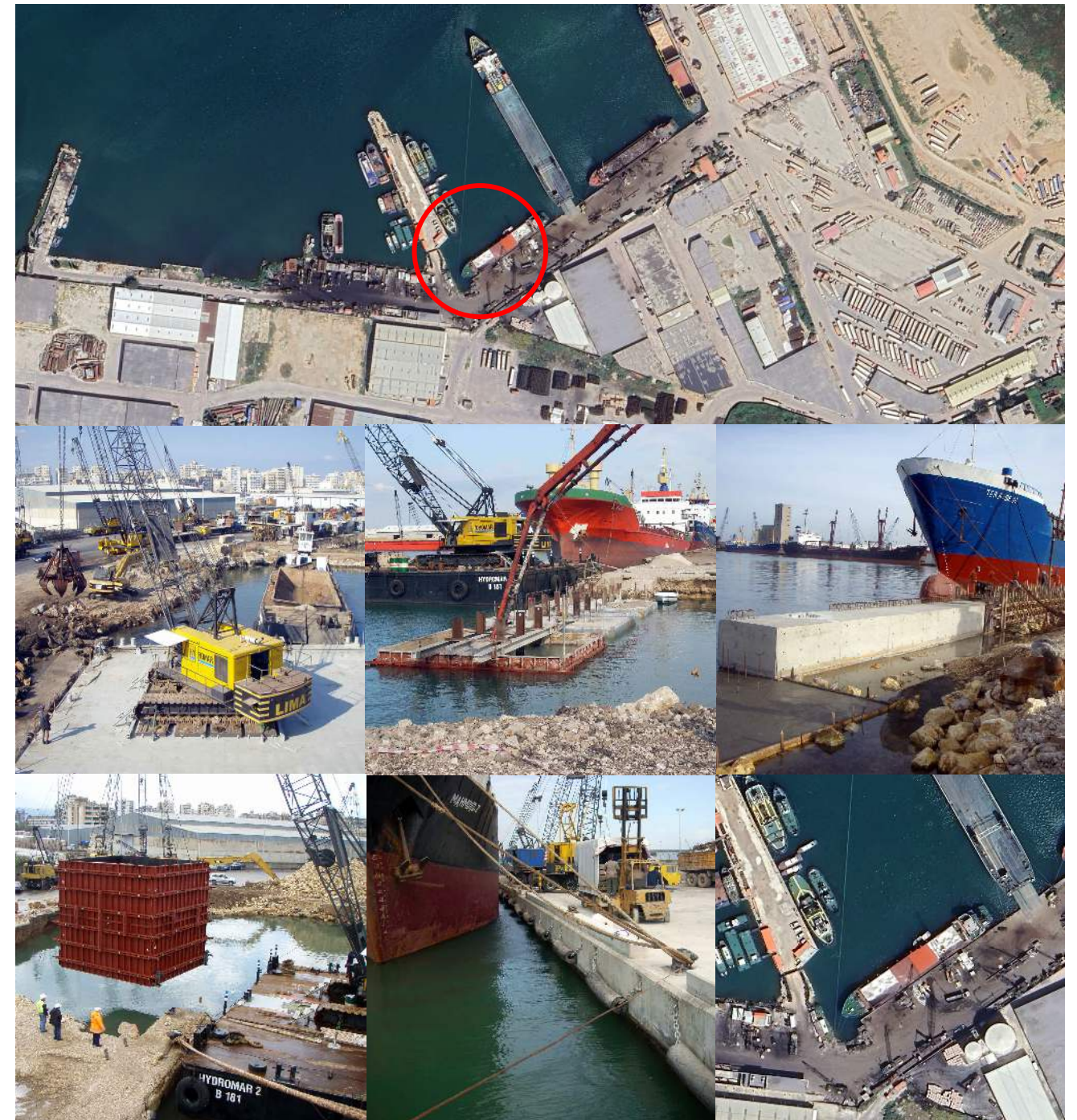
# EXTENSION OF QUAY N7 AT THE PORT OF TRIPOLI (PoT) (2/2)

## Extension of Quaywall N7 at the Port of Tripoli (PoT)

Year 2009 – 2010

Works Supervision

- Contractor : HYDROMAR sal
- Duration : 8 months



Ports / Surveying / General Cargo Terminals

**Client** LEBANESE REPUBLIC  
Ministry of Public Works and Transport  
Port of Tripoli Authority (PoTA)

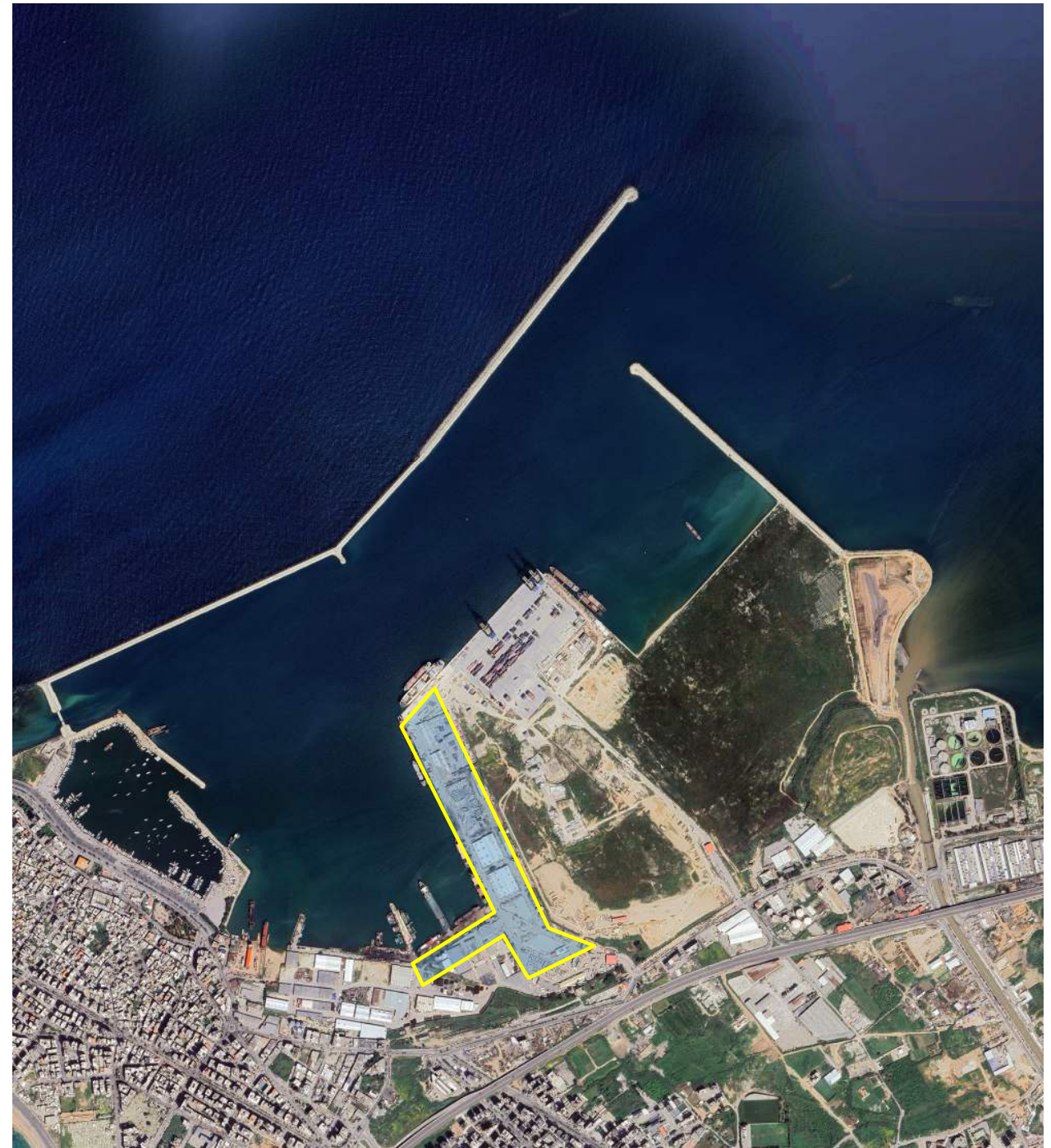
**Location** LEBANON – Tripoli  
34°27'15" N  
35°49'35" E

**Consultant** SEATEC sarl

## Water Feeding System for Vessels at the Port of Tripoli (PoT)

**Year** 2009  
Design / Surveying

- Water system along main quaywalls (~800m) and electronic control of delivered volumes
- GRP DN300 pipes installation (L=482.00m) for water supply
- HDPE DN200-80-2" pipes installation
- Trenching within the existing platform
- RC manholes with ductile cast iron covers
- Trenching, bedding, bituminous coating
- Pumps, digital water meters
- Transfer of Water volumes supplied to vessels by radar to PoTA headquarter
- Topographic survey (25,200m<sup>2</sup>)
- Tender Documents / Drawings / BoQ



*Ports / Surveying / General Cargo Terminals*

## Water Feeding System for Vessels at the Port of Tripoli (PoT)

Year 2009 – 2010

Works Supervision

- Contractor : HYDROMAR sal
- Duration : 7 months



Ports / Surveying / General Cargo Terminals

# QUAYWALL ASSESSMENT AT THE PORT OF TRIPOLI (PoT)

39

**Client** LEBANESE REPUBLIC  
Ministry of Public Works and Transport  
Port of Tripoli Authority (PoTA)

**Location** LEBANON – Tripoli  
34°27'27" N  
35°49'29" E

**Consultant** SEATEC sarl

## Quaywall Assessment at the Port of Tripoli (PoT)

**Year** 2009  
Surveying / Underwater investigation / Technical Assistance

- Technical and administrative / responsibilities assessment following the damage due to a ship collision with the quay, occurred on 2 piles and 3 sheetpiles of the main Container Terminal quay wall under construction



*Ports / Surveying / General Cargo Terminals / Container Terminals*

# LAND RECLAMATION AT THE PORT OF TRIPOLI (PoT)

40

**Client** LEBANESE REPUBLIC  
Ministry of Public Works and Transport  
Port of Tripoli Authority (PoTA)

**Location** LEBANON – Tripoli  
34°27'16" N  
35°50'4" E

**Consultant** SEATEC sarl

## Land Reclamation at the Port of Tripoli (PoT)

**Year** 2008  
Design / Surveying / Works Supervision

- Land reclamation (32,365m<sup>2</sup>) using acceptable debris extracted from the demolition and removal of damaged constructions in Naher El Bared camp
- Topographic survey
- Tender Documents / Specifications / Drawings

## Works Supervision

- Contractor : Al-Jihad for Commerce and Contracting sal (JCC)
- Duration : 4 months

*Ports / Surveying / General Cargo Terminals / Container Terminals*



# GUARBECCQUE QUAYWALL

**Client** Private French Consultant

**Location** FRANCE – Guarbecque  
50°36'45" N  
2°30'4" E

**Consultant** SEATEC sarl

## Guarbecque Quaywall

**Year** 2005  
Drawing assistance

- Variant N1: Quaywall (L=25.00m @-5.00m) - piles and sheetpiles / Platform (450m<sup>2</sup>)
- Variant N2: Quaywall (L=12.50m @-5.00m) - piles and riprap / Platform (252m<sup>2</sup>)
- Drawings



*Ports / General Cargo Terminals*

# DUBAI MARITIME CITY

42

**Client** Pauling Middle East Co. LLC  
**Location** UNITED ARAB EMIRATES – Dubai  
25°16'12" N  
55°15'38" E  
**Consultant** SEATEC sarl

## Dubai Maritime City

**Year** 2005  
Conceptual Design / Bidding Assistance

- Stability calculation for various types of quaywalls, shiplift structures (Mobile Hoist), slipway and finger pier
- Shipyard Quay Walls Design @-7.00m DMD
- Shiplift Quay Walls Design @-7.00m DMD  
Vessel type: 6,000T displacement
- Fitting Out Quay Walls @-5.00m DMD
- 300T Mobile Boat Hoist / Travel lift (50m yachts)
- Access Channel Quay Walls Design @-7.00m DMD
- 300T Mobile Boat Hoist / Travel lift (110m yachts)
- Marina Quay Walls @-3.00m / -7.00m DMD
- Slipway (Vertical walls on the outward faces and ramp)
- Finger Pier (Travel lift operations)
- Drawings / BoQ

**Ports / General Cargo Terminals**

