



# COMPANY PROFILE 2025



The sea \_\_\_\_\_ our responsibility

## NAVAL BASES

[www.seatec-sarl.com](http://www.seatec-sarl.com)

Copyright © 2025 SEATEC sarl. All rights reserved

- 
- I. [About us](#)
  - II. [Company History](#)
  - III. [Projects Location](#)
  - IV. [Get in Touch with Us](#)
  - V. [Company Vision](#)
  - VI. [Capacity of the Company](#)
  - VII. [Our Projects](#)
    - 1. [Container Terminals](#)
    - 2. [General Cargo Terminals](#)
    - 3. [Cruise Terminals](#)
    - 4. [Oil & gas Terminals](#)
    - 5. [Industrial Ports](#)
    - 6. [Grain terminals](#)
    - 7. [Marinas](#)
    - 8. [Fishing Ports](#)
    - 9. [Naval Bases](#)
    - 10. [Service Ports](#)
    - 11. [Waterfronts](#)
    - 12. [Coastal Protections](#)
    - 13. [Beaches](#)
    - 14. [Mooring structures](#)
    - 15. [Dredging](#)
    - 16. [Lift structures](#)
    - 17. [Sealines](#)
    - 18. [Environmental Studies](#)
  - VIII. [Our Clients](#)

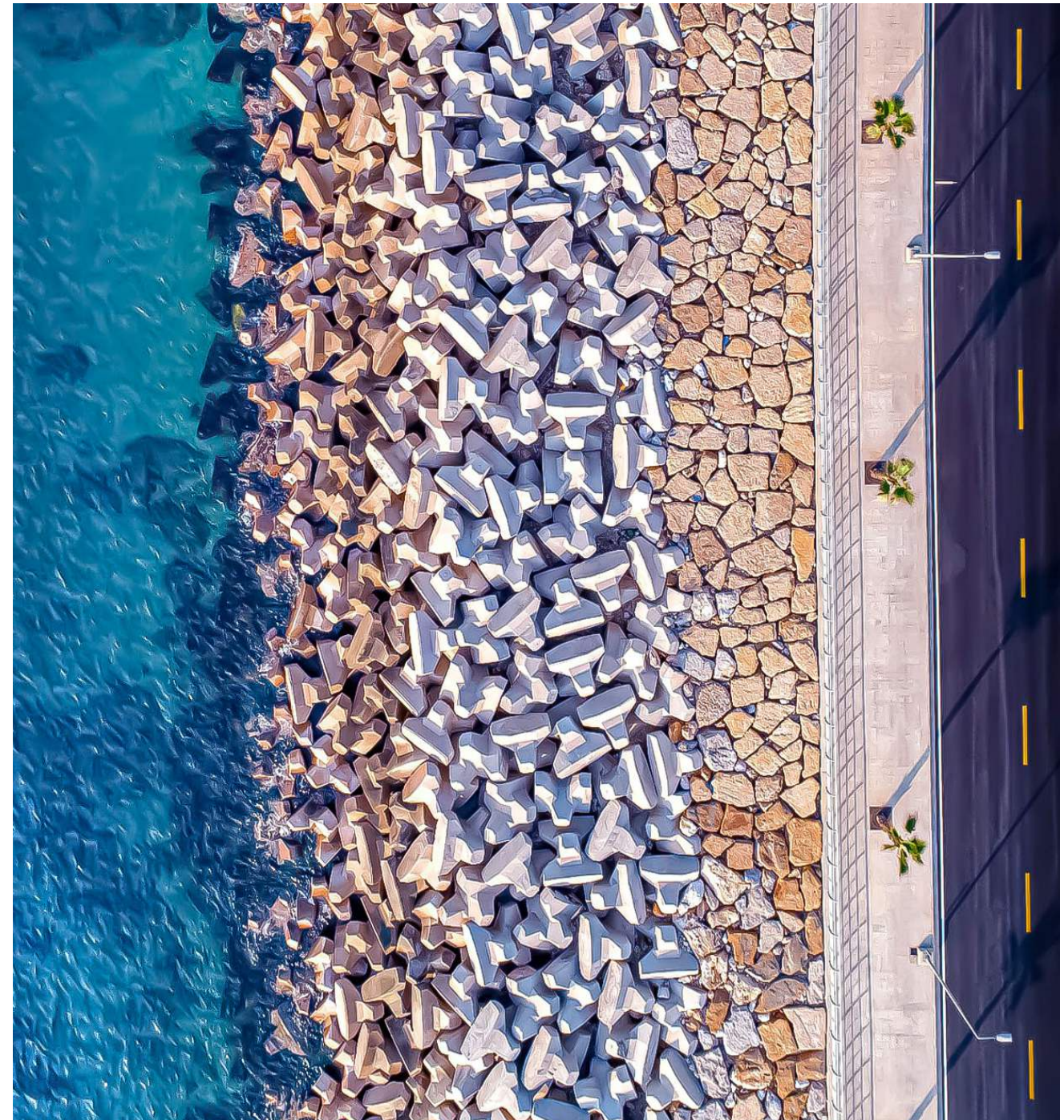
Press on Links to navigate to page

## SEATEC

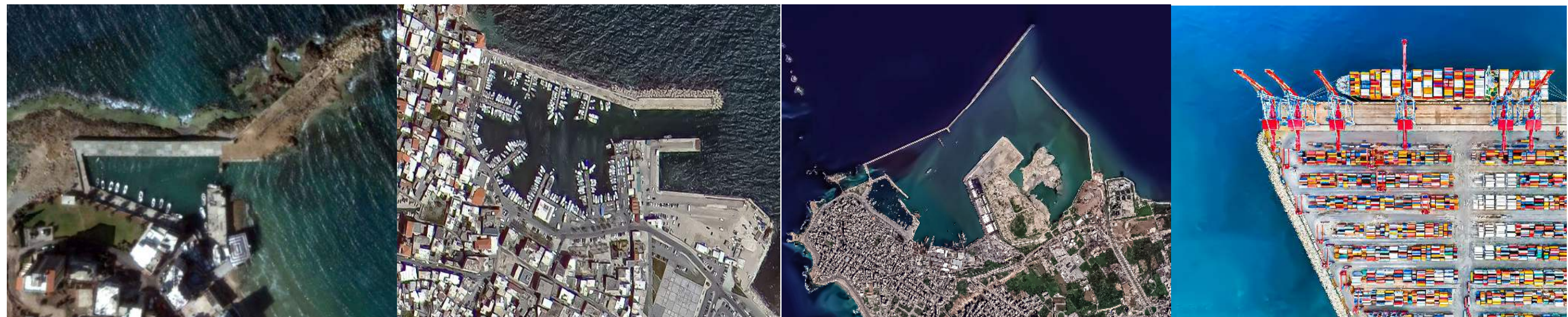
provides its clients with design and supervision services in coastal and port engineering, covering surveying, site investigation, master planning, numerical modeling, tender and detailed design, feasibility and EIA studies, permitting, construction planning, management and supervision.

Serving public as well as private sectors since 2000, SEATEC sarl is dedicated to give its clients the best engineering assistance.

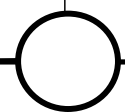
SEATEC sarl operates in the EU territory through its subsidiary in Cyprus, S. SEATEC (Cyprus) Ltd.



# COMPANY HISTORY

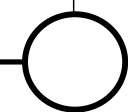


2000



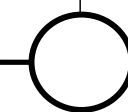
SEATEC office

2010



SEATEC sarl  
A Limited liability Company

2023



S. SEATEC (Cyprus) Ltd  
Subsidiary for SEATEC

# PROJECTS LOCATION



Countries ●	
<b>Middle East</b>	<b>AFRICA</b>
Lebanon	Egypt
Jordan	Libya
Syria	Tunis
<b>GULF</b>	Algeria
UAE	Djibouti
KSA	Ivory Coast
Qatar	Cameroon
Oman	Nigeria
<b>ASIA</b>	<b>EUROPE</b>
India	Cyprus

## HEAD OFFICE

### SEATEC sarl

Beaini Center, 1st floor, Down Town,  
31 Ernest Renan St.,  
PC 4504 Byblos, LEBANON

Ph : +961 9 55 00 22  
Fax : +961 9 55 00 44  
Mob : +961 3 29 10 30  
Web : [www.seatec-sarl.com](http://www.seatec-sarl.com)  
E-mail : [seatec@seatec-sarl.com](mailto:seatec@seatec-sarl.com)

## SUBSIDIARY OFFICE

### S. SEATEC (CYPRUS) ltd

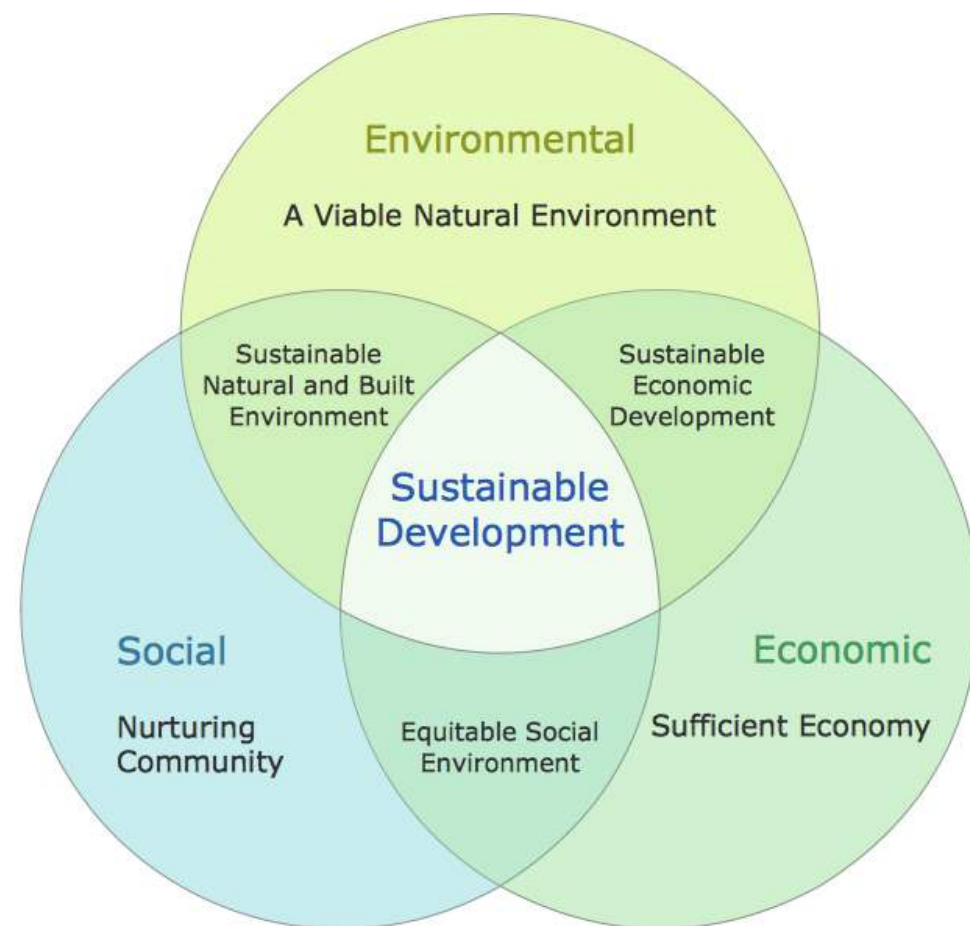
Michail Olympiou, 26 Dali,  
2540 Nicosia, CYPRUS



## VISION 01

### SUSTAINABLE ENGINEERING SOLUTIONS

*“Leading the way in creating sustainable and resilient engineering solutions that harmonize with nature and withstand the test of time”*



## VISION 02

### ECO-FRIENDLY AND GREEN PRACTICES

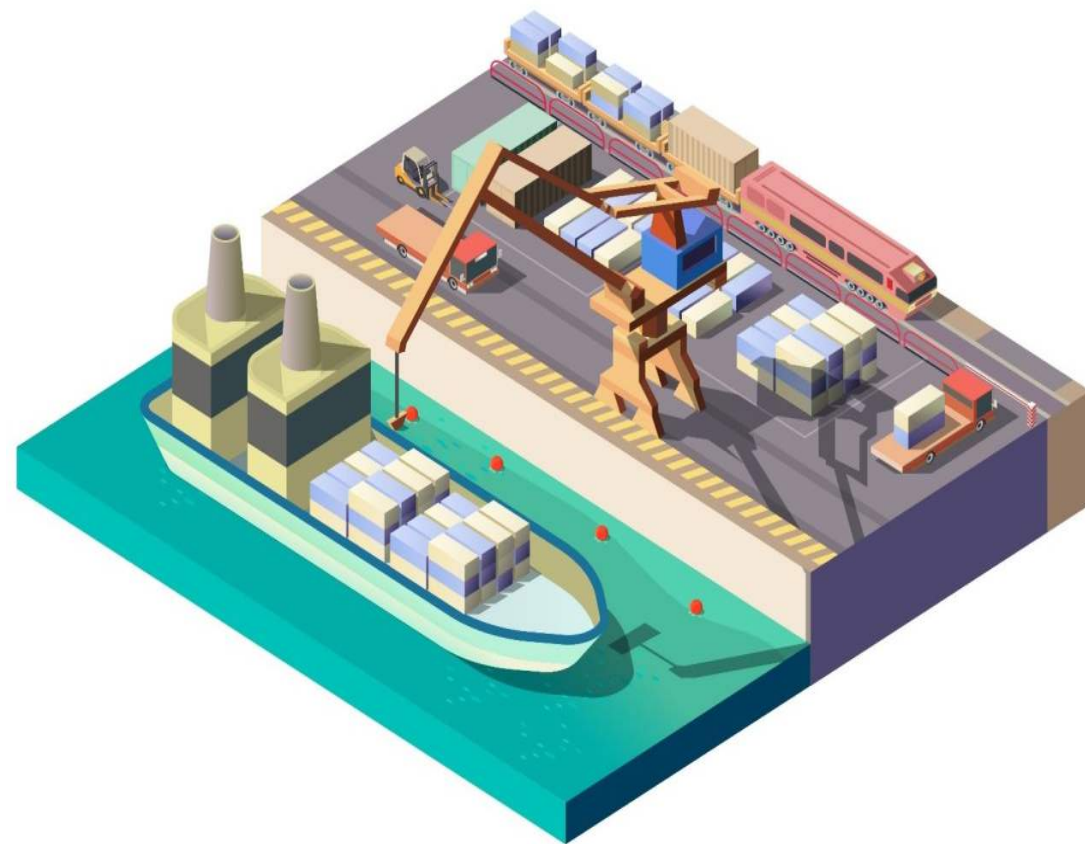
*“Pioneering eco-friendly and green solutions that preserve coastlines and promote a sustainable future for generations to come”*



## VISION 03

### SMART PORTS

"Transforming ports into smart, efficient, and interconnected hubs that drive global trade and economic growth".



## VISION 04

### INNOVATIVE COASTAL DEVELOPMENTS

"Fostering innovative coastal developments that boost local economies and enhance the quality of life for coastal communities".



## INTRO

### SERVICES

SEATEC sarl ([www.seatec-sarl.com](http://www.seatec-sarl.com)) is a multi-disciplinary engineering company, operating since 2000, mainly specialized in the design and supervision of coastal and ports projects, covering :

- Ports: commercial, cruise, marinas, fishing, industrial, naval bases...
- Specialized Terminals: Containers, general cargo, bulk, Agri bulk, oil and gas...
- Urban Waterfronts developments
- Coastal protections
- Dredging and reclamation works
- Beaches (protection and artificial nourishment)
- Offshore pipelines (outfalls, intake pipes...)
- Mooring structures, ship lifts
- Marine infra (Breakwaters, quay walls, platforms, slipways...)



## SERVICES

SEATEC offers a range of services through an experienced team in coastal and port engineering field :

- Site selection and evaluation
- Topographic and bathymetric survey
- Underwater inspection
- Rehabilitation of existing infrastructure
- Development of new infrastructure and facilities
- Master planning (future development) and phasing
- 3D presentations (views and videos)
- Feasibility studies
- Design optimization
- Design review /value engineering
- Preliminary and detailed design
- Execution drawings
- Numerical modelling
- Environmental Impact Assessment (EIA) studies
- Permitting and consents from relevant public authorities
- Tender documents
- Assistance to clients in selection of contractors



## SERVICES

- Supervision services, management and supervision of construction sites in accordance with health and safety guidelines, through an experienced team of site engineers, supervisors, surveyors and divers
- Supervising contractors, subcontractors and work activities
- Compliance of executed works with the relevant building regulations, quality standards
- Construction permit and with the specified technical documentation and guidelines
- Issuing of information and instructions on behalf of the client
- Validate of contractor's payments
- Hazards and risks assessment and Prevention of construction errors
- Carrying out regular inspections and raising safety concerns at the appropriate level
- Keeping construction on schedule, construction errors
- Completing records for site reports
- Resolving problems and implementing improvements
- Works handing over certificate



## OUR TEAM

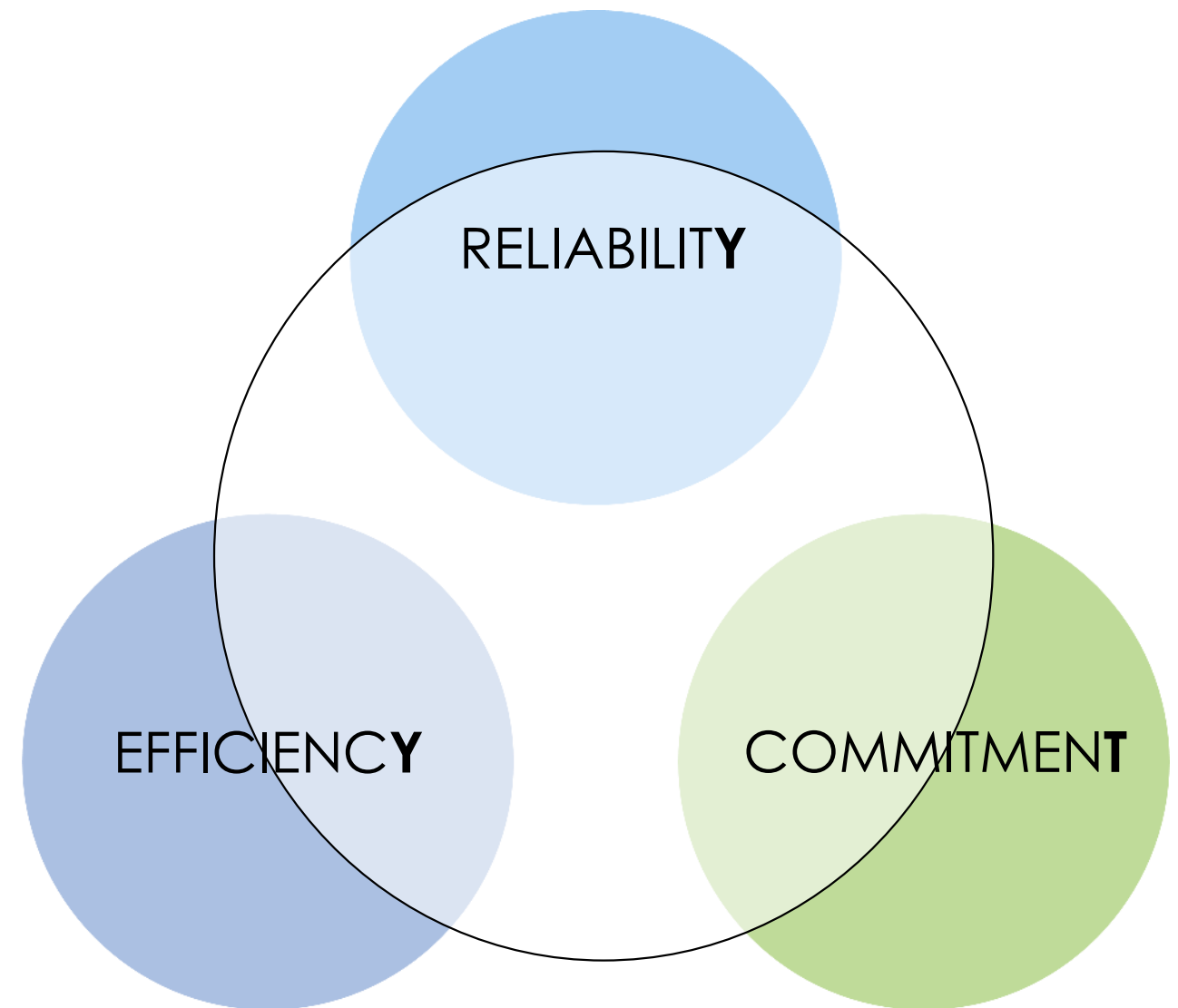
SEATEC have an experienced Team for in house design, covering all coastal and ports engineering aspects, geotechnical analysis, numerical modeling, works supervision..., keeping an excellent cooperation with leading European maritime and hydraulic laboratories for 2D/3D physical modeling.

A strong team spirit with the Client will be essential, working as part of a single entity rather than as competent individuals.

The team of experts is mostly composed of people involved in our recent projects, carefully selected for their:

- Experience in the field of expertise
- Efficiency
- Experience in working with each other
- Ability to advise both public and private Clients

Moreover, SEATEC can mobilize on short notice its technical resources when and where such expertise is needed.



## OUR NUMBERS



SINCE  
**2000**



COUNTRIES  
**+16**



CLIENTS  
**+50**



PROJECTS  
**+450**

# OUR PROJECTS



NAVAL BASES

# LAF BEIRUT NAVAL BASE FLUSHING SYSTEM

**Client** LEBANESE REPUBLIC  
Ministry of Defense  
Lebanese Army Forces (LAF)

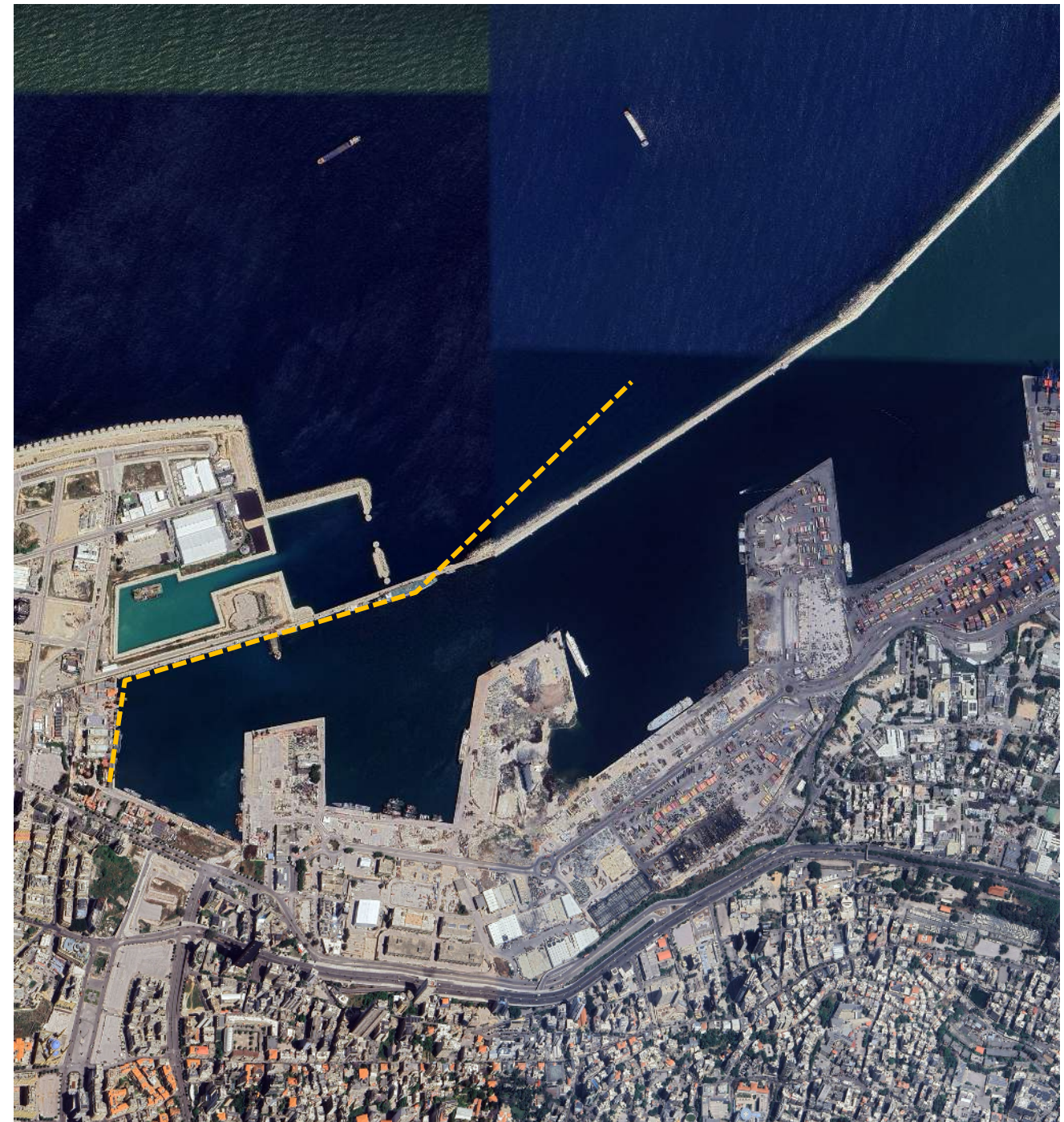
**Location** LEBANON – Beirut  
33°54'06" N  
35°30'33" E

**Consultant** SEATEC sarl

## LAF Beirut Naval Base Flushing System

**Year** 2024  
Conceptual Design

- Flushing system of basin N1
- Buried channel (L=200m)
- Collection chamber
- Marine outfall (L=1,420m)
- Drawings / BoQ



Ports / Naval Bases / Sealines / Marine Outfalls

**Client** Ministry of Public Works and Transport

**Location** LEBANON – Beirut  
33°54'10" N  
35°31'03" E

**Consultant** SEATEC sarl

## Port of Beirut Master Plan

**Year** 2022 – 2023  
Conceptual Design

- New Master plan of the Port (Rehabilitation and reconstruction) following the August 4<sup>th</sup> blast
- LAF Naval base (83,842m<sup>2</sup>)
- Ro-Ro Terminal (76,239m<sup>2</sup>)
- General Cargo Terminal (76,612m<sup>2</sup>)
- SEZ (194,610m<sup>2</sup>)
- Grain Terminal (76,338m<sup>2</sup>)
- Container storage (63,137m<sup>2</sup>)
- Container Terminal (492,378m<sup>2</sup>)
- Administration (92,332m<sup>2</sup>)
- Marina (88,908m<sup>2</sup>)
- Investors area (446,918m<sup>2</sup>)
- Public space / Memorial area (70,148m<sup>2</sup>)
- Main entrance (28,511m<sup>2</sup>)
- Railway station (84,982m<sup>2</sup>)

*Ports / Waterfronts / General Cargo Terminals / Container Terminals / Grain Terminals / **Naval Bases** / Marinas*



# LAF NAVAL BASE SLIPWAY AT AMCHIT

**Client** MARCONTRACTING

**Location** LEBANON – Beirut  
34°9'16" N  
35°37'49" E

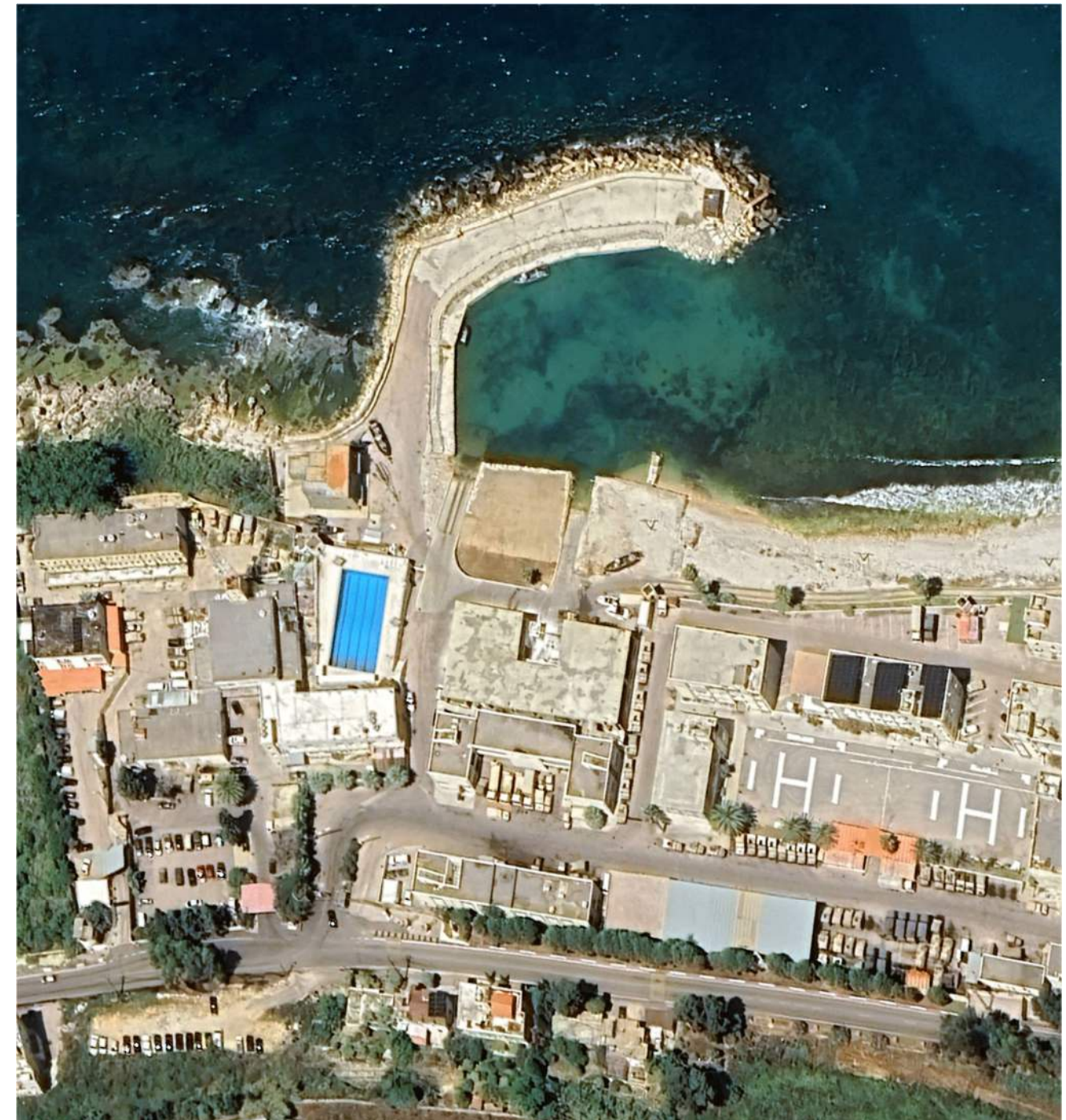
**Consultant** SEATEC sarl

## LAF Naval Base Slipway at Amchit

**Year** 2020  
Conceptual Design

- Slipway for small patrol boats
- Drawings / BoQ

*Details and dimensions cannot be disclosed*



*Ports / Naval Bases / Lift Structures / Slipways*

# SLIPWAY AT US DJIBOUTI NAVAL BASE

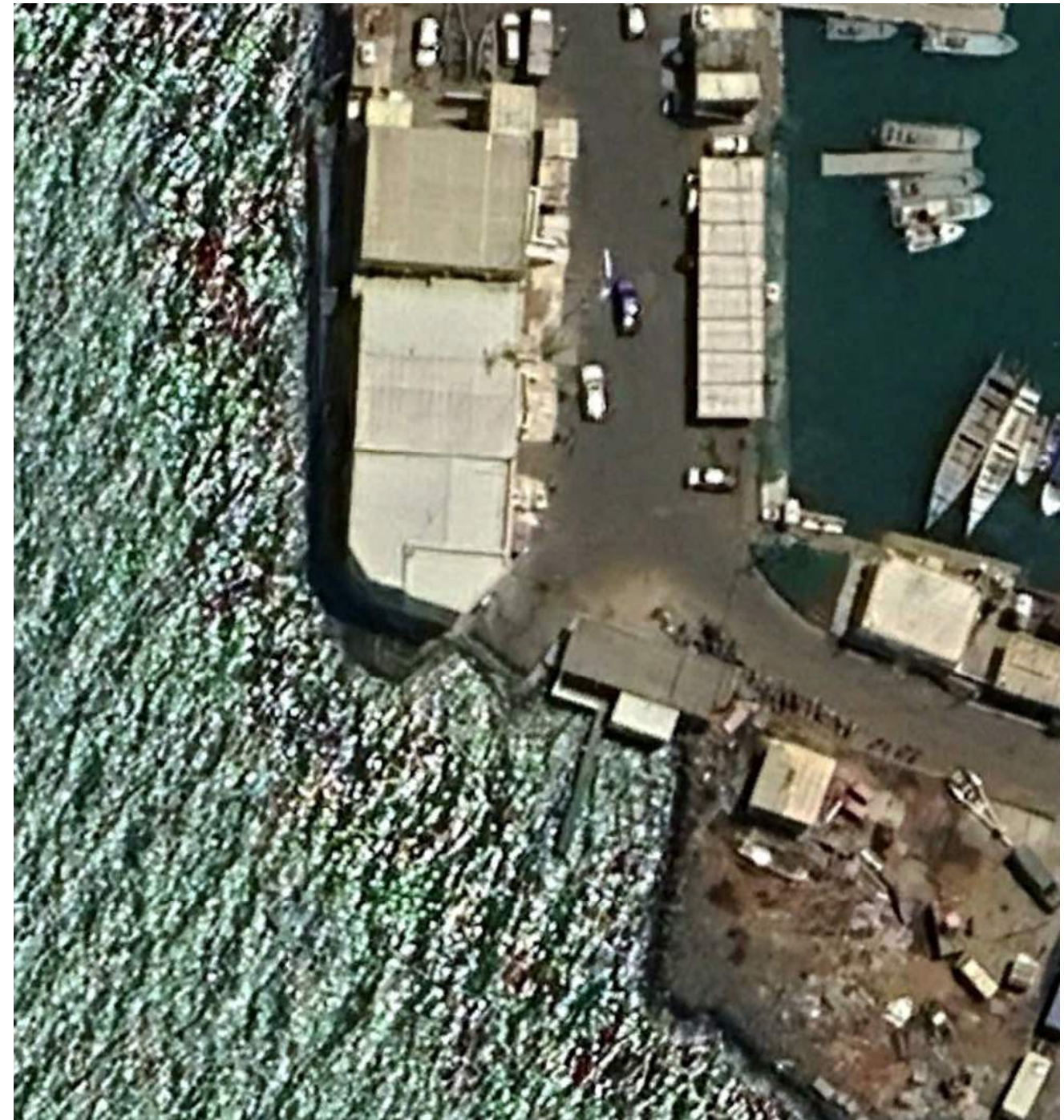
**Client** MAR Group  
**Location** Djibouti – Djibouti  
11°36'03"N  
43°08'11"E  
**Consultant** SEATEC sarl

## Slipway at US Djibouti naval base

**Year** 2020  
**Design**

- New slipway for US navy patrol boats
- Method statement
- Drawings / BoQ

*Details and dimensions cannot be disclosed*



*Ports / Naval Bases / Lift Structures / Slipways*

**Client** LEBANESE REPUBLIC  
Ministry of Interior and Municipalities  
Directorate General of Internal Security Forces (ISF)

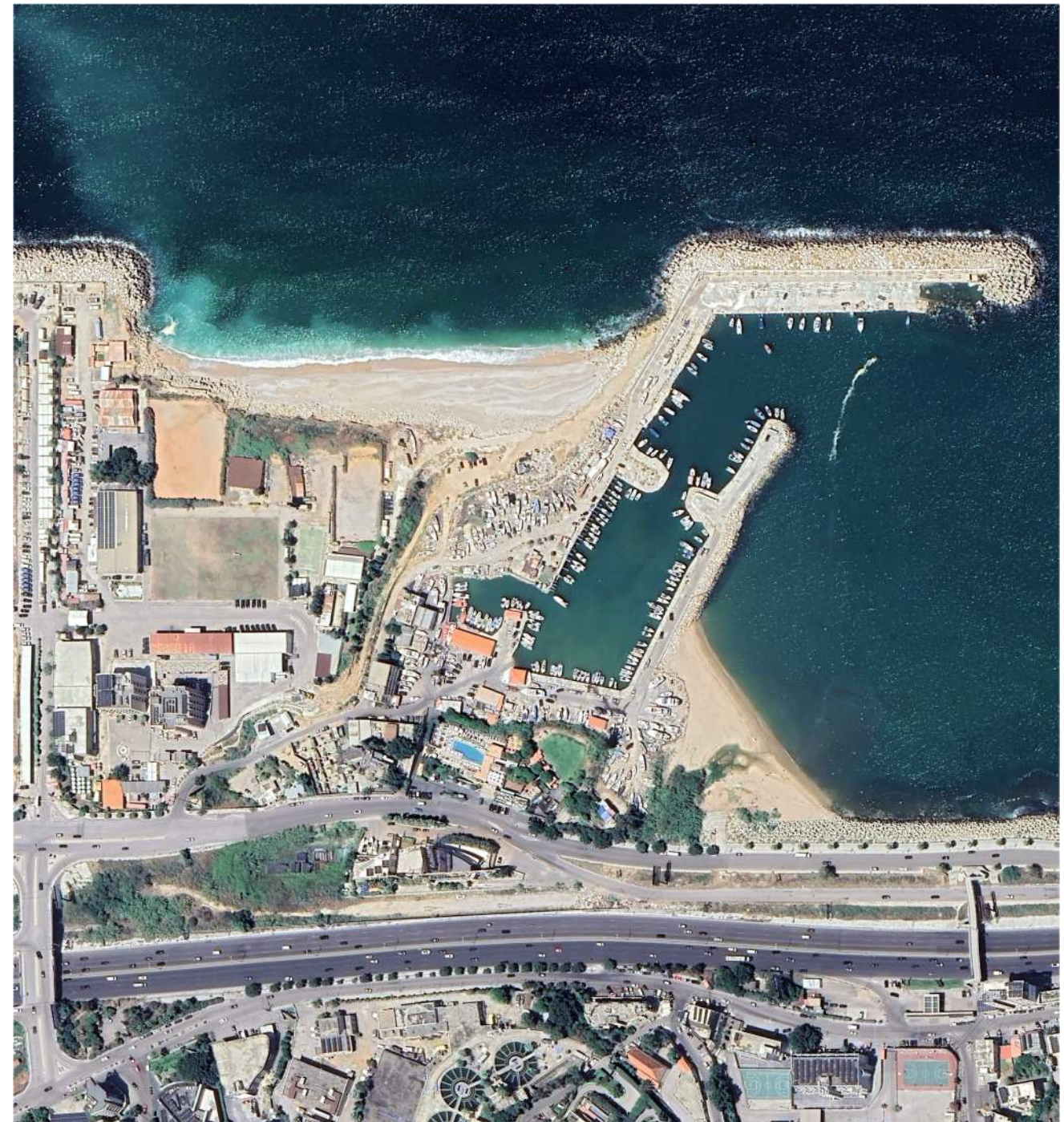
**Location** LEBANON – Dbayeh  
33°56'35" N  
35°35'16" E

**Consultant** SEATEC sarl

## ISF Dbayeh Base Coastal Protection - 2

**Year** 2017 - 2018  
Design / Surveying

- Rocky protection (L=270m)
- RC retaining walls and access ramp
- Topographic survey
- Bathymetric survey (12,000m<sup>2</sup>)
- Tender Documents / Drawings / BoQ



*Ports / Naval Bases / Coastal Protections / Revetments / Surveying*

# LAF QUAYWALL AT THE PORT OF BEIRUT

19

**Client** LEBANESE REPUBLIC  
Ministry of Defense  
Lebanese Army Forces (LAF)

**Location** LEBANON – Beirut  
33°54'11" N  
35°30'32" E

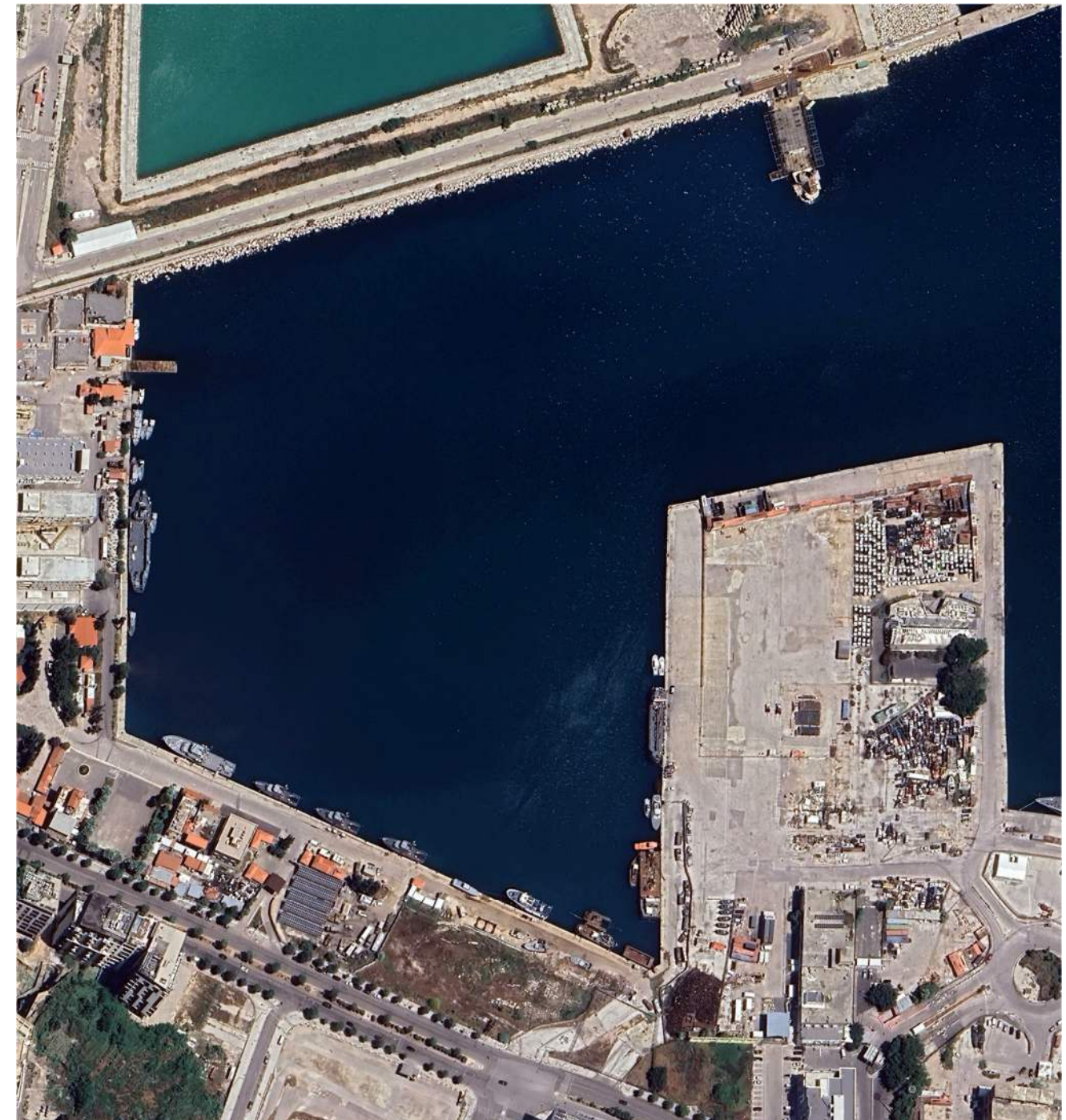
**Consultant** SEATEC sarl

## LAF Quaywall at the Port of Beirut (PoB)

**Year** 2014  
Preliminary Design

- Quaywall (L=375m @-8.00m MSL) / Precast concrete blocks (Gravity QW)
- Drawings / BoQ

*Details and dimensions cannot be disclosed*



*Ports / Naval Bases*

# LAF NAVAL BASE AT AMCHIT

**Client** LEBANESE REPUBLIC  
Ministry of Defense  
Lebanese Army Forces (LAF)

**Location** LEBANON – Beirut  
34°9'16" N  
35°37'49" E

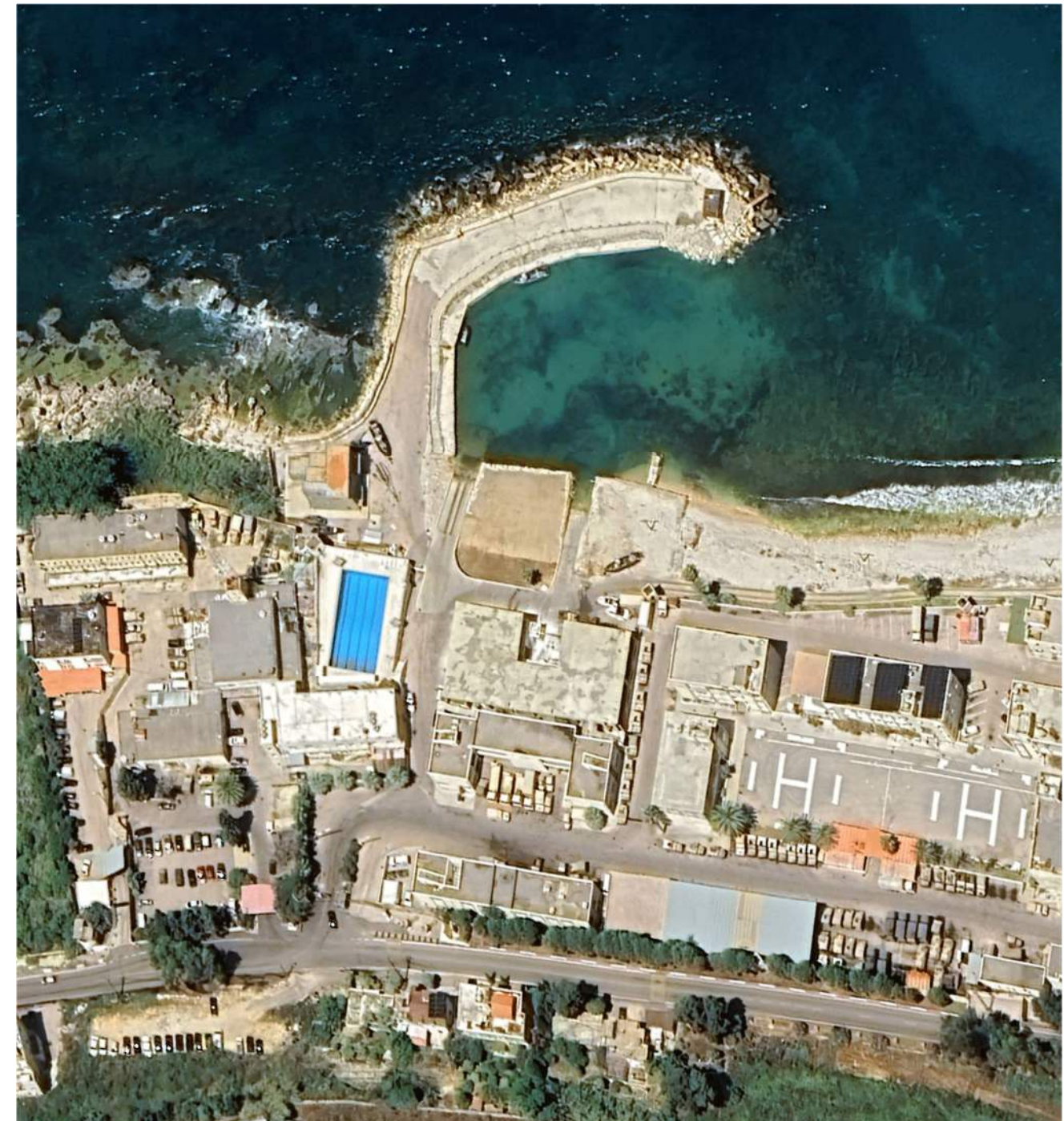
**Consultant** SEATEC sarl

## LAF Naval Base at Amchit

**Year** 2013  
Conceptual Design

- Main Breakwater
- Secondary Breakwater
- Quaywalls / Precast concrete blocks (Gravity QW)
- Top RC slabs on grade
- Slipway
- Reclaimed areas (Bituminous coating and RC slabs)
- Drawings / BoQ

*Details and dimensions cannot be disclosed*



*Ports / Naval Bases / Lift Structures / Slipways*

**Client** LEBANESE REPUBLIC  
Ministry of Interior and Municipalities  
Directorate General of Internal Security Forces (ISF)

**Location** LEBANON – Dbayeh  
33°56'35" N  
35°35'16" E

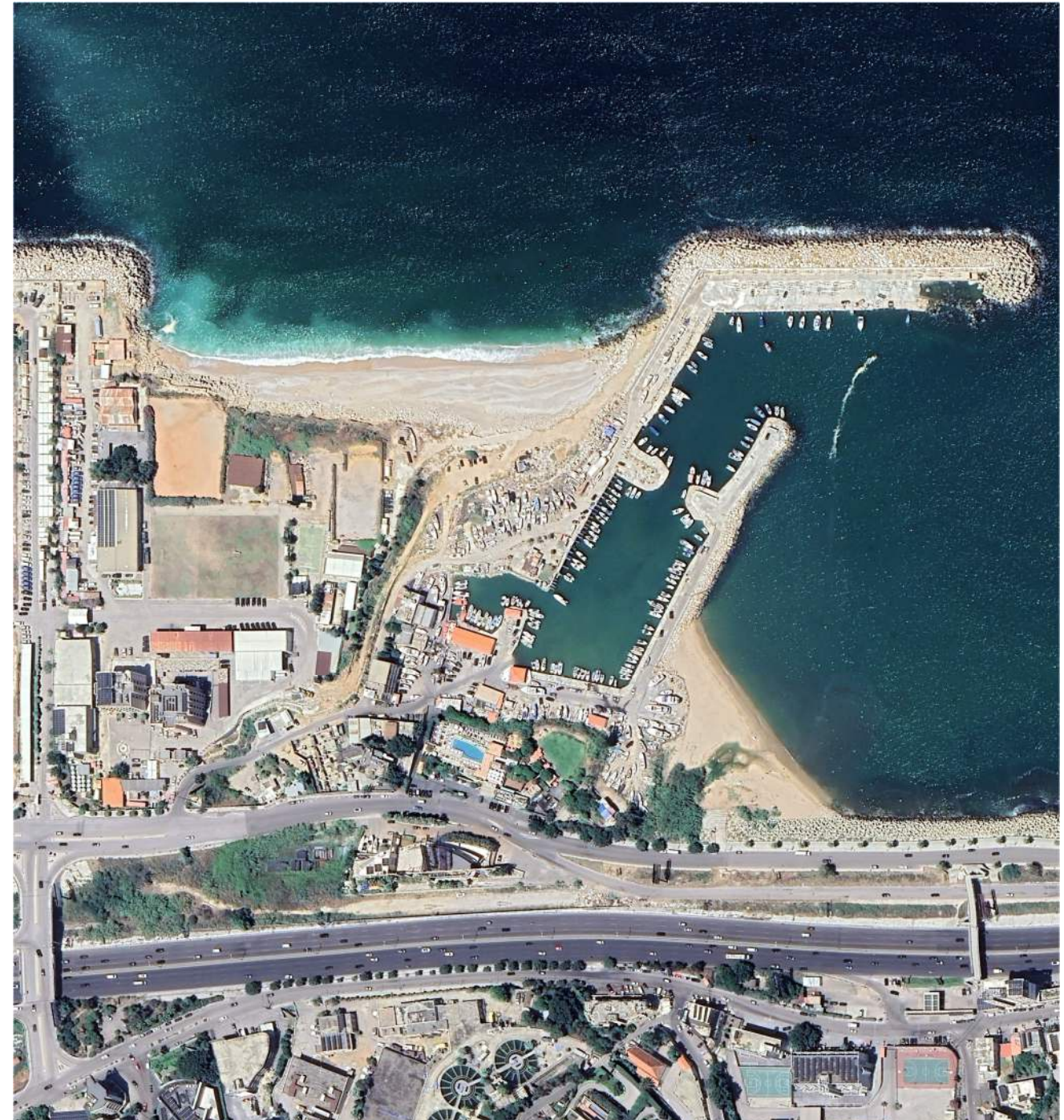
**Consultant** SEATEC sarl

## ISF Dbayeh Base Coastal Protection - 1

**Year** 2012  
Design / Surveying

- Protection of existing reclaimed coastal area (L=300m)
- Jetty with 9 and 18m<sup>3</sup> precast concrete Accropodes blocks Type I
- Secondary Breakwater
- Topographic survey (11,000m<sup>2</sup>)
- Bathymetric survey (15,000m<sup>2</sup>)
- Tender Documents / Drawings / BoQ

*Details and dimensions cannot be disclosed*



*Ports / Naval Bases / Coastal Protections / Revetments / Surveying*

# ISF DBAYEH NAVAL BASE

**Client** LEBANESE REPUBLIC  
Ministry of Interior and Municipalities  
Directorate General of Internal Security Forces (ISF)

**Location** LEBANON – Dbayeh  
33°56'35" N  
35°35'16" E

**Consultant** SEATEC sarl

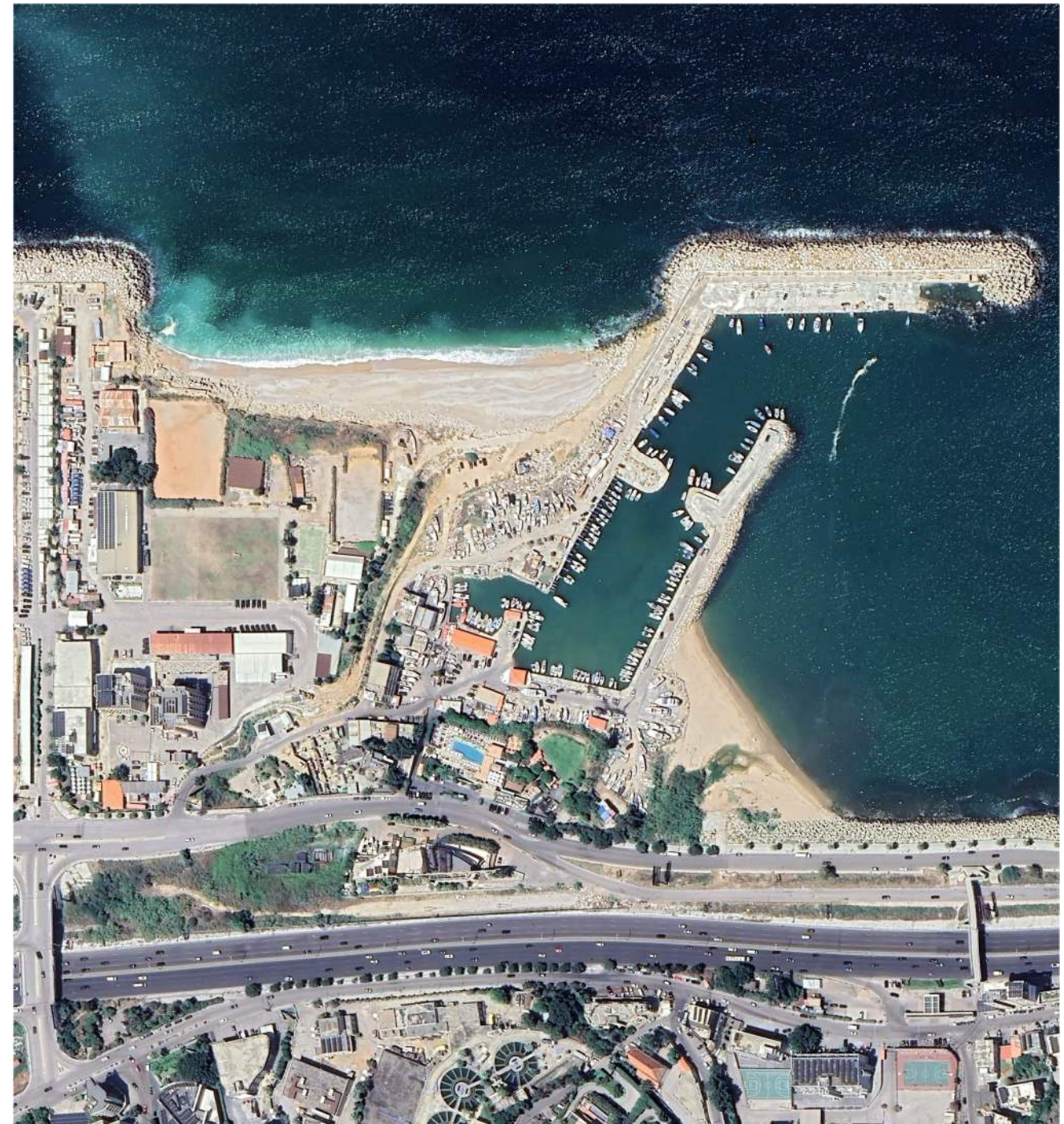
## ISF Dbayeh Naval Base

**Year** 2007  
Design / Surveying

**Year** 2012  
Design / Surveying

- Main and Secondary Breakwaters
- Quaywalls / Precast concrete blocks (Gravity QW)
- Slipway
- Infrastructure (Electrical and water supply, lighting...)
- Reclaimed areas (Bituminous coating and RC slabs)
- Topographic survey (11,000m<sup>2</sup>)
- Bathymetric survey (165,000m<sup>2</sup>)
- Tender Documents / Drawings / BoQ

*Details and dimensions cannot be disclosed*  
*Ports / Naval Bases / Lift Structures / Slipways / Surveying*



# SHARJAH COAST GUARD NAVAL BASE

**Client** Pauling Middle East Co. LLC  
**Location** UNITED ARAB EMIRATES (UAE) – Sharjah  
25°21'56" N  
55°22'33" E  
**Consultant** SEATEC sarl

## Sharjah Coast Guard Naval Base

**Year** 2005  
Bidding Assistance

**Year** 2005  
Design / Surveying

- Contractor Assistance in the bidding procedure
- BoQ



Ports / Naval Bases