



COMPANY PROFILE 2025



The sea _____ our responsibility

LIFT STRUCTURES

www.seatec-sarl.com

Copyright © 2025 SEATEC sarl. All rights reserved

-
- I. [About us](#)
 - II. [Company History](#)
 - III. [Projects Location](#)
 - IV. [Get in Touch with Us](#)
 - V. [Company Vision](#)
 - VI. [Capacity of the Company](#)
 - VII. [Our Projects](#)
 - 1. [Container Terminals](#)
 - 2. [General Cargo Terminals](#)
 - 3. [Cruise Terminals](#)
 - 4. [Oil & gas Terminals](#)
 - 5. [Industrial Ports](#)
 - 6. [Grain terminals](#)
 - 7. [Marinas](#)
 - 8. [Fishing Ports](#)
 - 9. [Naval Bases](#)
 - 10. [Service Ports](#)
 - 11. [Waterfronts](#)
 - 12. [Coastal Protections](#)
 - 13. [Beaches](#)
 - 14. [Mooring structures](#)
 - 15. [Dredging](#)
 - 16. [Lift structures](#)
 - 17. [Sealines](#)
 - 18. [Environmental Studies](#)
 - VIII. [Our Clients](#)

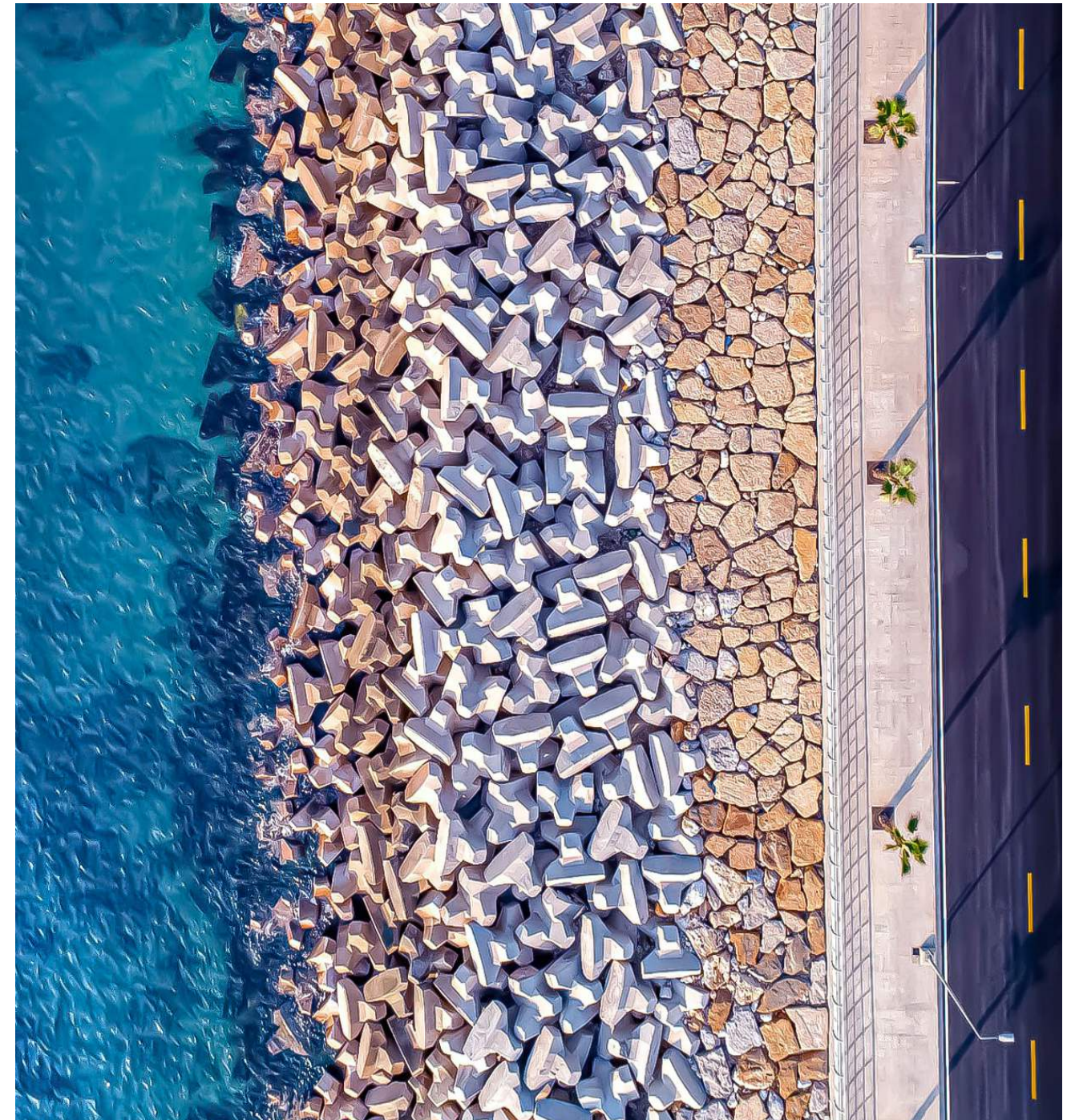
Press on Links to navigate to page

SEATEC

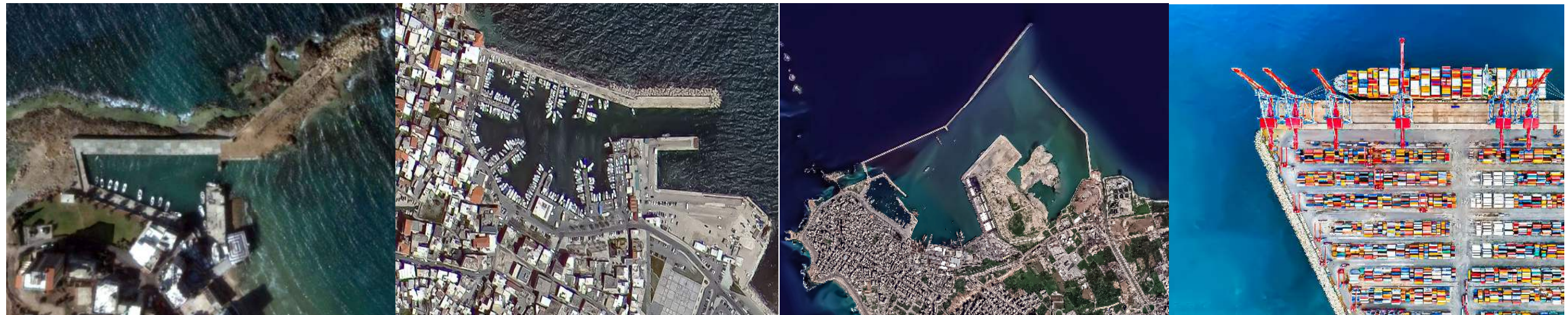
provides its clients with design and supervision services in coastal and port engineering, covering surveying, site investigation, master planning, numerical modeling, tender and detailed design, feasibility and EIA studies, permitting, construction planning, management and supervision.

Serving public as well as private sectors since 2000, SEATEC sarl is dedicated to give its clients the best engineering assistance.

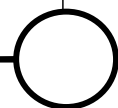
SEATEC sarl operates in the EU territory through its subsidiary in Cyprus, S. SEATEC (Cyprus) Ltd.



COMPANY HISTORY

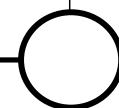


2000



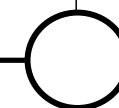
SEATEC office

2010



SEATEC sarl
A Limited liability Company

2023



S. SEATEC (Cyprus) Ltd
Subsidiary for SEATEC

PROJECTS LOCATION



Countries ●	
Middle East	AFRICA
Lebanon	Egypt
Jordan	Libya
Syria	Tunis
GULF	Algeria
UAE	Djibouti
KSA	Ivory Coast
Qatar	Cameroon
Oman	Nigeria
ASIA	EUROPE
India	Cyprus

HEAD OFFICE

SEATEC sarl

Beaini Center, 1st floor, Down Town,
31 Ernest Renan St.,
PC 4504 Byblos, LEBANON

Ph : +961 9 55 00 22
Fax : +961 9 55 00 44
Mob : +961 3 29 10 30
Web : www.seatec-sarl.com
E-mail : seatec@seatec-sarl.com

SUBSIDIARY OFFICE

S. SEATEC (CYPRUS) ltd

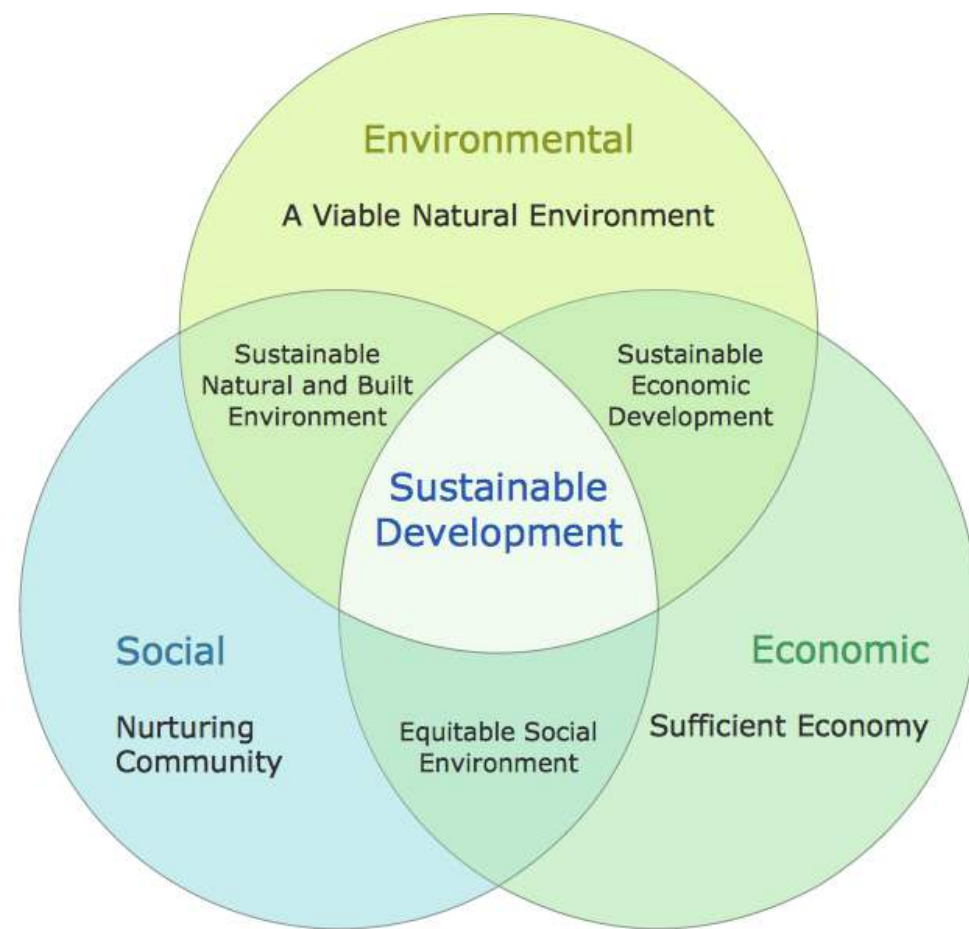
Michail Olympiou, 26 Dali,
2540 Nicosia, CYPRUS



VISION 01

SUSTAINABLE ENGINEERING SOLUTIONS

“Leading the way in creating sustainable and resilient engineering solutions that harmonize with nature and withstand the test of time”



VISION 02

ECO-FRIENDLY AND GREEN PRACTICES

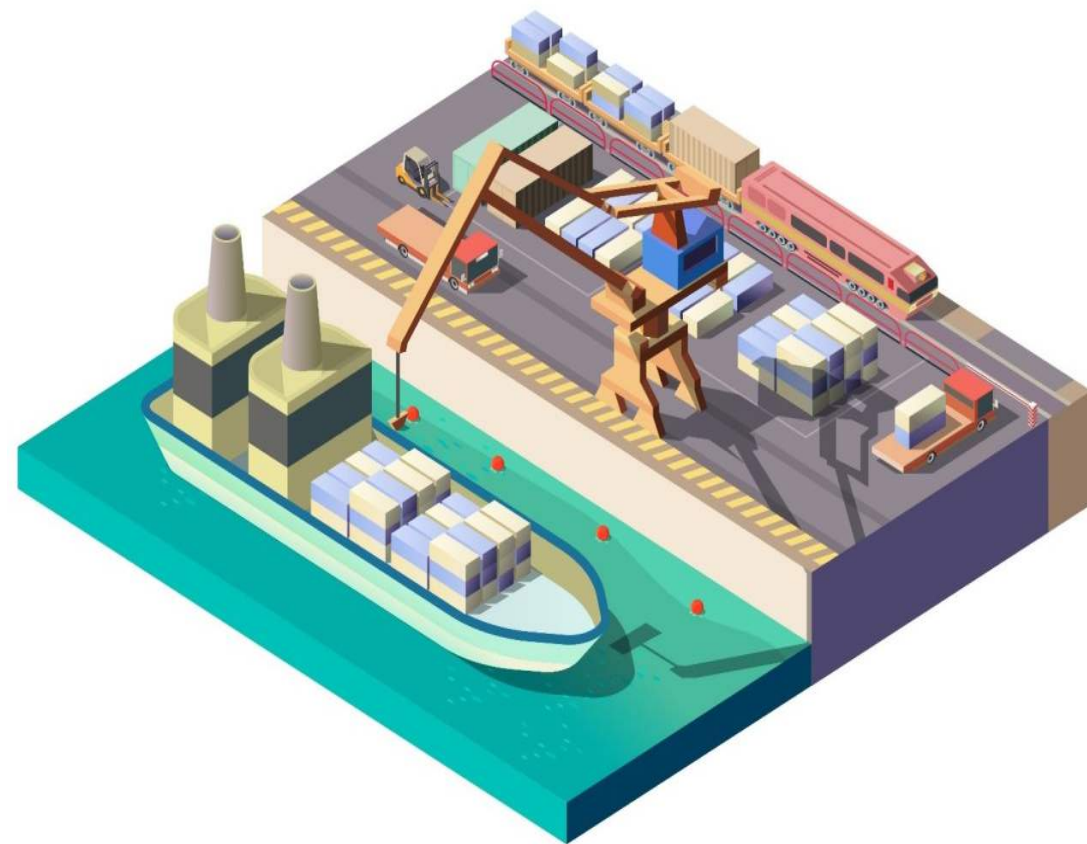
“Pioneering eco-friendly and green solutions that preserve coastlines and promote a sustainable future for generations to come”



VISION 03

SMART PORTS

"Transforming ports into smart, efficient, and interconnected hubs that drive global trade and economic growth".



VISION 04

INNOVATIVE COASTAL DEVELOPMENTS

"Fostering innovative coastal developments that boost local economies and enhance the quality of life for coastal communities".



INTRO

SERVICES

SEATEC sarl (www.seatec-sarl.com) is a multi-disciplinary engineering company, operating since 2000, mainly specialized in the design and supervision of coastal and ports projects, covering :

- Ports: commercial, cruise, marinas, fishing, industrial, naval bases...
- Specialized Terminals: Containers, general cargo, bulk, Agri bulk, oil and gas...
- Urban Waterfronts developments
- Coastal protections
- Dredging and reclamation works
- Beaches (protection and artificial nourishment)
- Offshore pipelines (outfalls, intake pipes...)
- Mooring structures, ship lifts
- Marine infra (Breakwaters, quay walls, platforms, slipways...)



SERVICES

SEATEC offers a range of services through an experienced team in coastal and port engineering field :

- Site selection and evaluation
- Topographic and bathymetric survey
- Underwater inspection
- Rehabilitation of existing infrastructure
- Development of new infrastructure and facilities
- Master planning (future development) and phasing
- 3D presentations (views and videos)
- Feasibility studies
- Design optimization
- Design review /value engineering
- Preliminary and detailed design
- Execution drawings
- Numerical modelling
- Environmental Impact Assessment (EIA) studies
- Permitting and consents from relevant public authorities
- Tender documents
- Assistance to clients in selection of contractors



SERVICES

- Supervision services, management and supervision of construction sites in accordance with health and safety guidelines, through an experienced team of site engineers, supervisors, surveyors and divers
- Supervising contractors, subcontractors and work activities
- Compliance of executed works with the relevant building regulations, quality standards
- Construction permit and with the specified technical documentation and guidelines
- Issuing of information and instructions on behalf of the client
- Validate of contractor's payments
- Hazards and risks assessment and Prevention of construction errors
- Carrying out regular inspections and raising safety concerns at the appropriate level
- Keeping construction on schedule, construction errors
- Completing records for site reports
- Resolving problems and implementing improvements
- Works handing over certificate



OUR TEAM

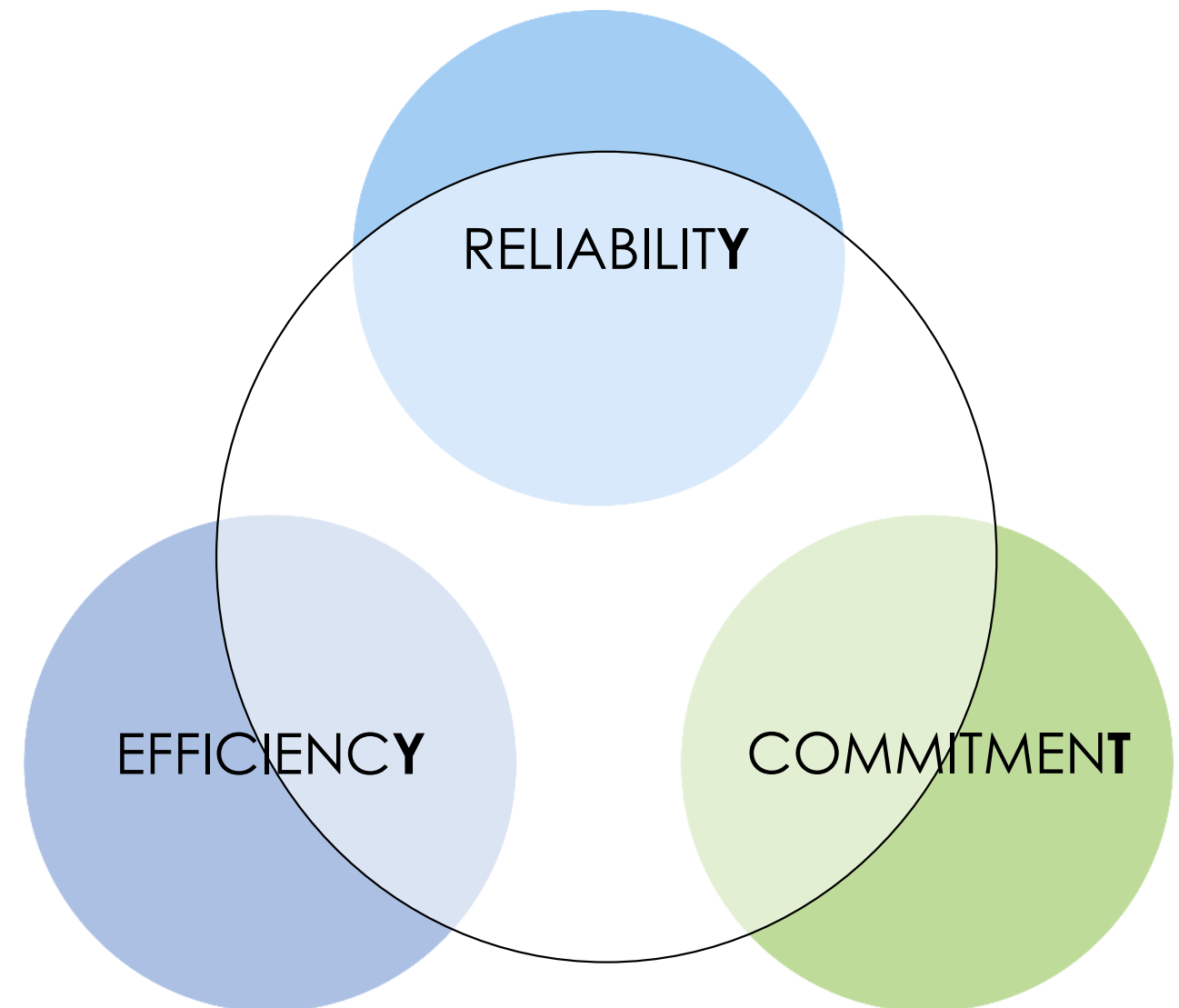
SEATEC have an experienced Team for in house design, covering all coastal and ports engineering aspects, geotechnical analysis, numerical modeling, works supervision..., keeping an excellent cooperation with leading European maritime and hydraulic laboratories for 2D/3D physical modeling.

A strong team spirit with the Client will be essential, working as part of a single entity rather than as competent individuals.

The team of experts is mostly composed of people involved in our recent projects, carefully selected for their:

- Experience in the field of expertise
- Efficiency
- Experience in working with each other
- Ability to advise both public and private Clients

Moreover, SEATEC can mobilize on short notice its technical resources when and where such expertise is needed.



OUR NUMBERS



SINCE
2000



COUNTRIES
+16



CLIENTS
+50



PROJECTS
+450

LIFT STRUCTURES



** Slipways are not shown in this section*

Client LEBANESE REPUBLIC
Ministry of Public Works and Transport
Port of Tripoli Authority (PoTA)

Location LEBANON – Tripoli
34°27'44" N
35°50'07" E

Consultant SEATEC sarl

Floating Dock at the Port of Tripoli (PoT)

Year 2017 - 2018
Design / Surveying

- Design of all facilities for a DBOT floating dock (L= 170m / Lifting capacity= 8000 DWT)
- Quaywall (PCB / Gravity QW) @-14.00m MSL
- Dredging works for basin and access channel @-8.00m and -14.00m MSL
- Topographic survey
- Bathymetric survey (40,000m²)
- DBOT Tender Documents / Drawings / BoQ
- Prefeasibility study



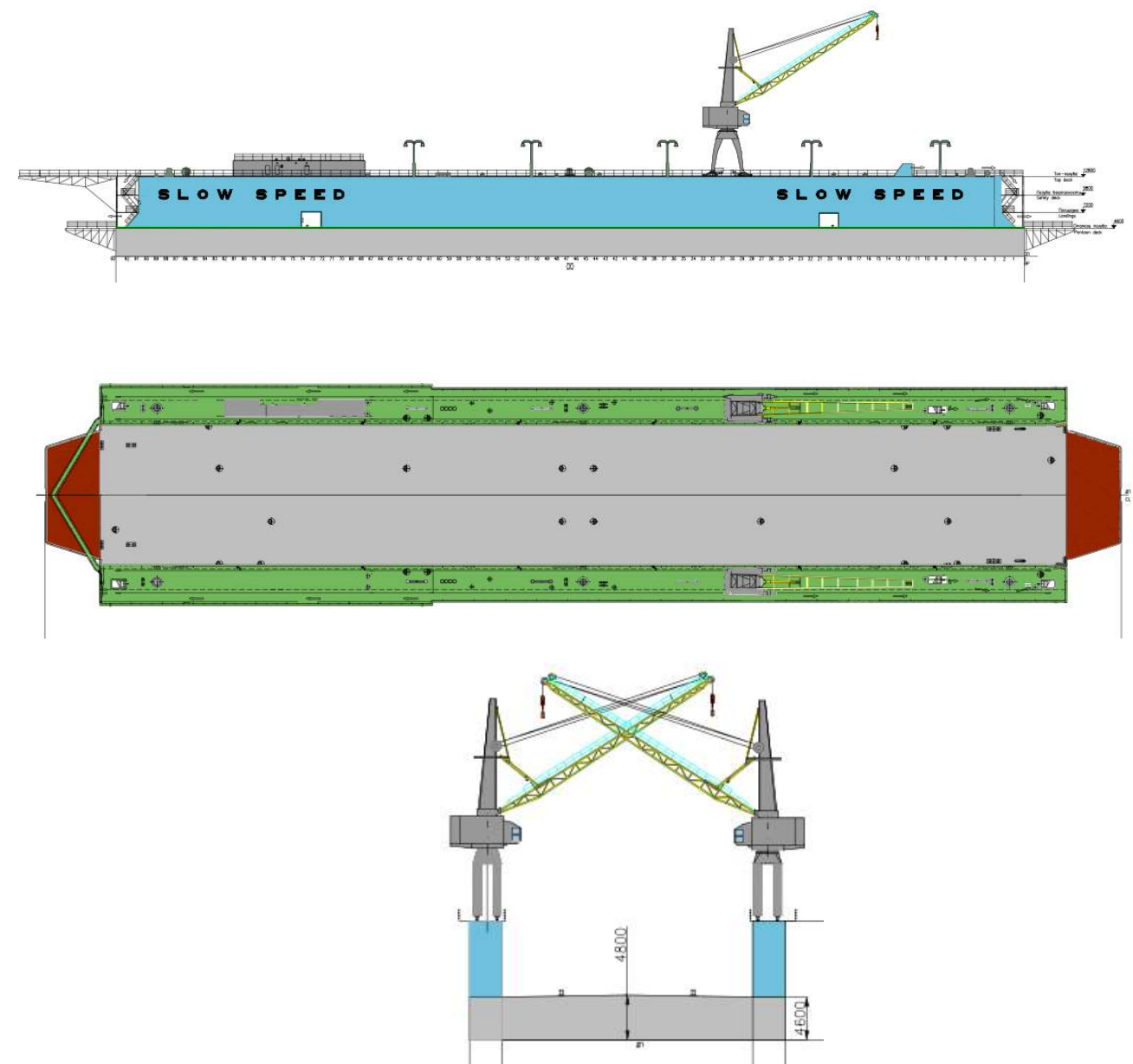
Ports / Surveying / Dredging / Service Ports / Mooring Structures / Dolphins / **Lift Structures / Floating Docks**

Floating Dock at the Port of Tripoli (PoT)

Year 2023 - 2024

Design update

- New location for the floating dock within the PoT
- Reclaimed working area (11,250m²)
- Landing platform/quaywall (PCB/Gravity QW) L=20.00m @-14.00m MSL
- 7 mooring / breasting dolphins for temporary berth
- Dredging works for basin @-8.00m and floating dock berth @-14.00m MSL
- Access road along existing fill (L~450m @-6.00m MSL)
- Client assistance for the DBOT Tendering process
- DBOT Tender Documents / Drawings / BoQ
- Prefeasibility study



Ports / Surveying / Dredging / Service Ports / Mooring Structures / Dolphins / **Lift Structures / Floating Docks**

SLIPWAY AT US DJIBOUTI NAVAL BASE

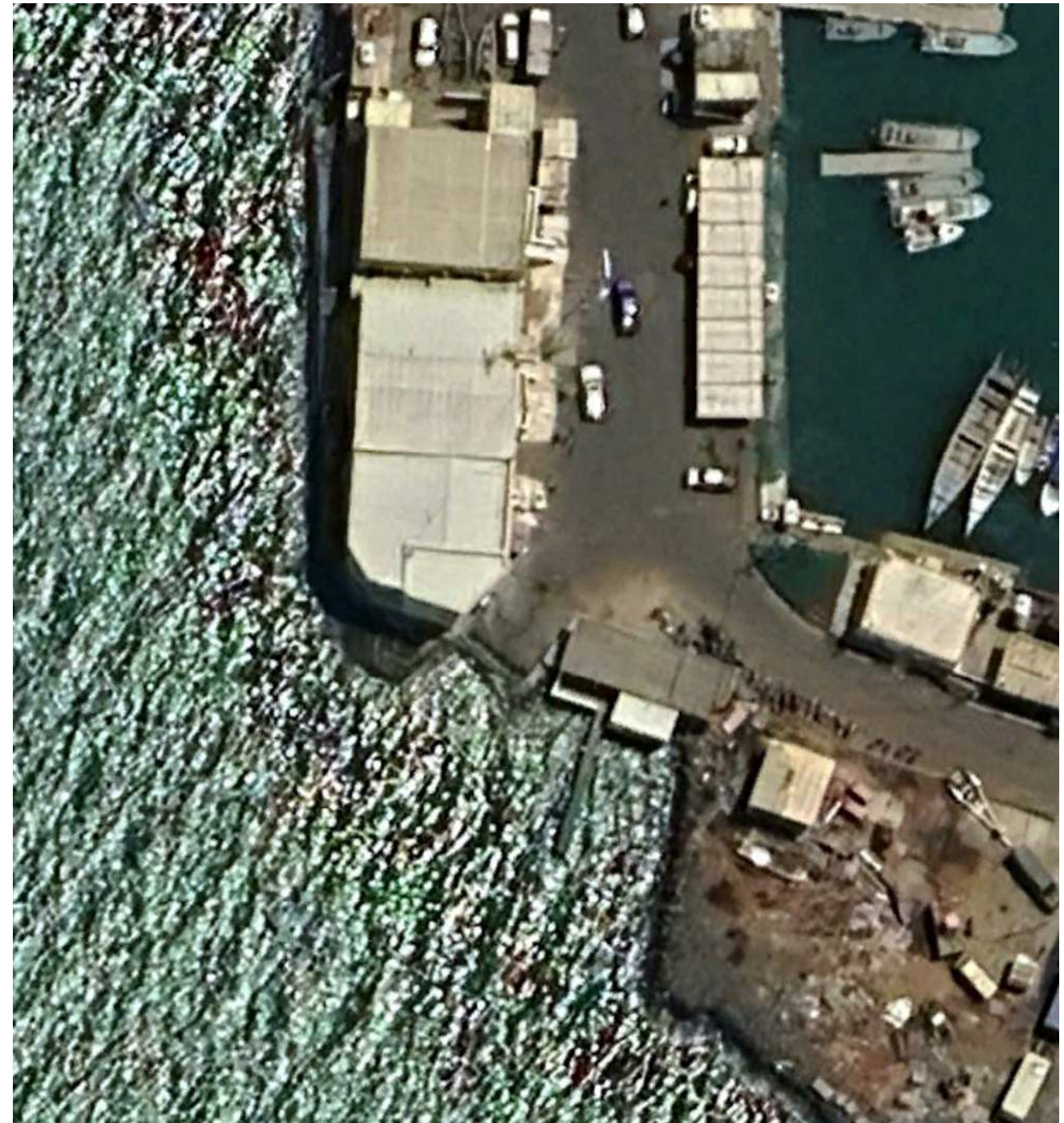
Client MAR Group
Location Djibouti – Djibouti
11°36'03"N
43°08'11"E
Consultant SEATEC sarl

Slipway at US Djibouti naval base

Year 2020
Design

- New slipway for US navy patrol boats
- Method statement
- Drawings / BoQ

Details and dimensions cannot be disclosed



Ports / Naval Bases / Lift Structures / Slipways

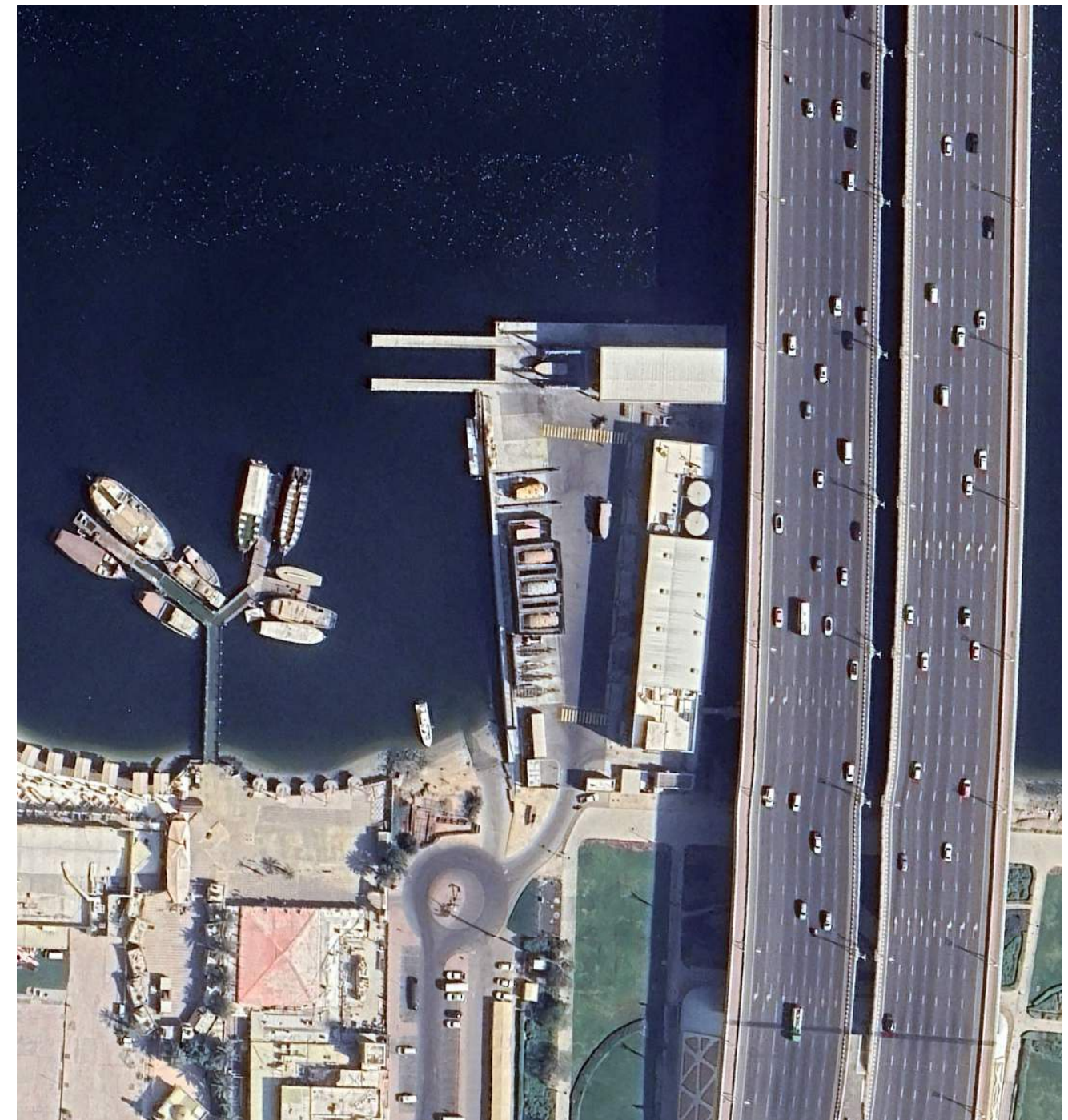
Client Consultant HSS (Chss)
Location United Arab Emirates – Dubai
34°2'11" N
35°37'29" E
Consultant SEATEC sarl

RTA Al Garhoud maintenance facility for public transport vessels in Dubai Creek / RTA marine agency (Road and Transport Agency)

Year 2014 – 2015 – 2016
Design

- Quaywalls (L=63m @-1.20m DMD) / Precast concrete blocks (Gravity QW)
- Quaywalls (L=80m @-2.60m DMD) / Precast concrete blocks (Gravity QW)
- Quaywalls (L=38m @-3.20m DMD) / Precast concrete blocks (Gravity QW)
- Quaywalls (L=90m @-4.20m DMD) / Precast concrete blocks (Gravity QW)
- Finger Piers (L=45m @-4.20m DMD, Nbr 2) / Precast concrete blocks for Boats hoist (200T lifting capacity)
- Marine accessories (Mooring bollards, fenders)
- Bituminous / RC Platforms

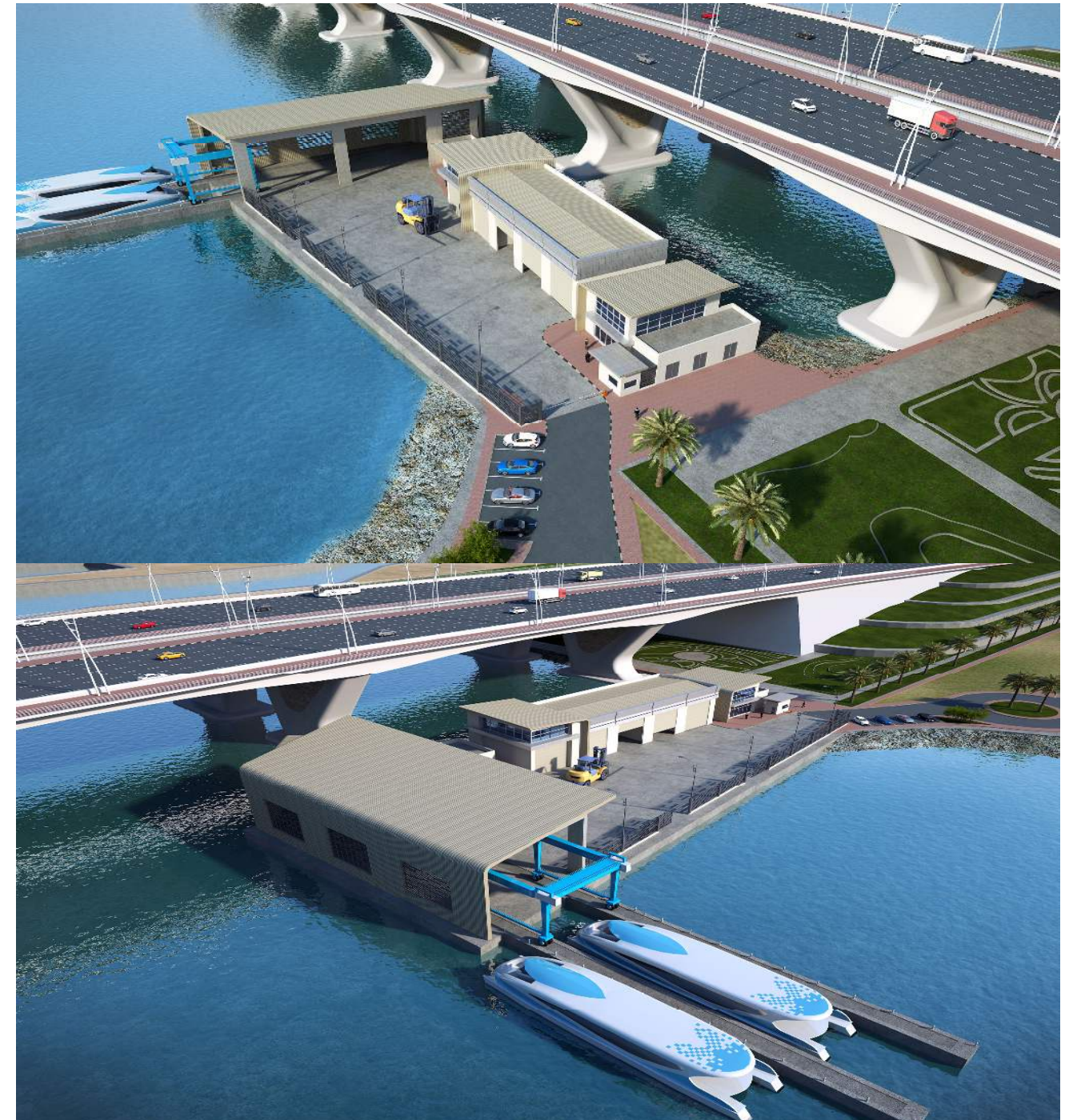
Ports / Service Ports / **Lift Structures** / **Hoists**



RTA Al Garhoud maintenance facility for public transport vessels in Dubai Creek / RTA marine agency (Road and Transport Agency)

Year 2014 – 2015 – 2016

- Administration and maintenance workshops (3,740m²): Architectural, Structural and MEP design
- Berthing and lifting for maintenance of heritage acras, water taxis, water buses, and water ferries)
- Reclaimed area (6,800m²)
- Specifications / Drawings / BoQ



Ports / Service Ports / **Lift Structures** / Hoists

Client LEBANESE REPUBLIC
Ministry of Public Works and Transport
Directorate General of Land and Maritime Transport

Location LEBANON – Dora
33°53'56" N
35°33'3" E

Consultant SEATEC sarl

Dora Fishing Port

Year 2012
Design / Surveying

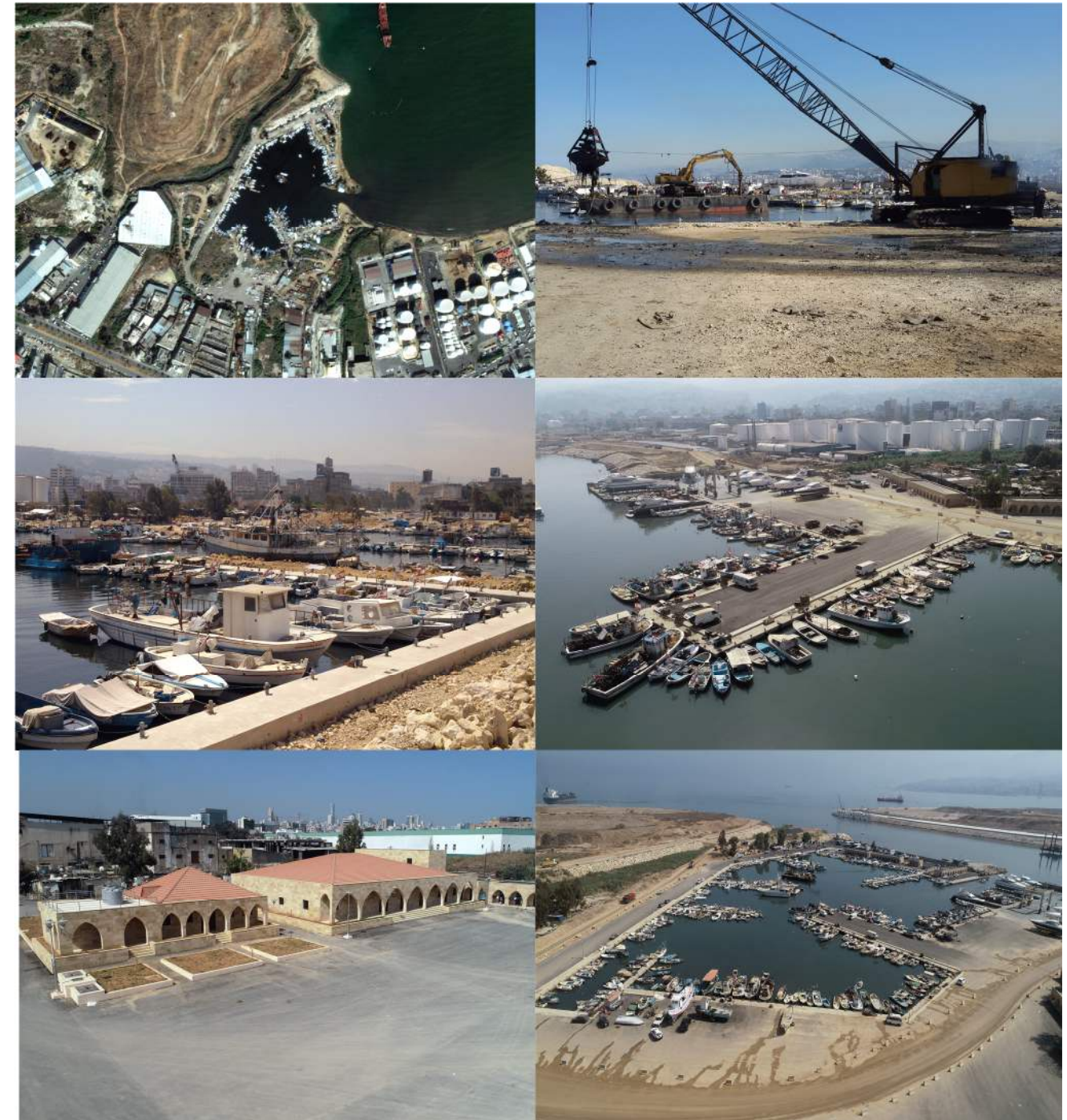
- Master Plan
- Berthing capacity (520 boats)
- Sloped rocky protection of the reclaimed platforms (L=230m @ max-4.00m MSL)
- Quay walls (L=910m @-3.00m MSL) / Underwater concrete blocks (Gravity QW)
- Finger Piers (Nbr=3; L=185m @-3.00m MSL) / Precast concrete blocks



Ports / Fishing Ports / **Lift Structures** / **Slipways** / **Hoists** / Dredging / Surveying

Dora Fishing Port

- Water Outlet for basin flushing (L=51.00m) / Precast concrete blocks
- Slipway (Boats ramp)
- Boat Hoist (100T capacity) / Precast concrete blocks (L=21.00m @-3.00m MSL)
- RC Platforms (3,395m²)
- Bituminous Platforms (34,300m²)
- Excavation works
- Dredging works of basin (31,220m²) and entrance channel up to -3.00m MSL and for quay walls foundations and rocky protection
- RC retaining walls
- Infrastructure (Electrical supply, pipes, manholes, lighting poles)
- Infrastructure (Water supply, Pumps, pipes, manholes, tanks)
- Marine accessories (Mooring bollards)
- Fishermen rooms (Nbr=58; 1,184m²)
- Army and Ministry of agriculture rooms (Nbr=6;185m²)
- Directorate general of land and maritime transport room (58m²)



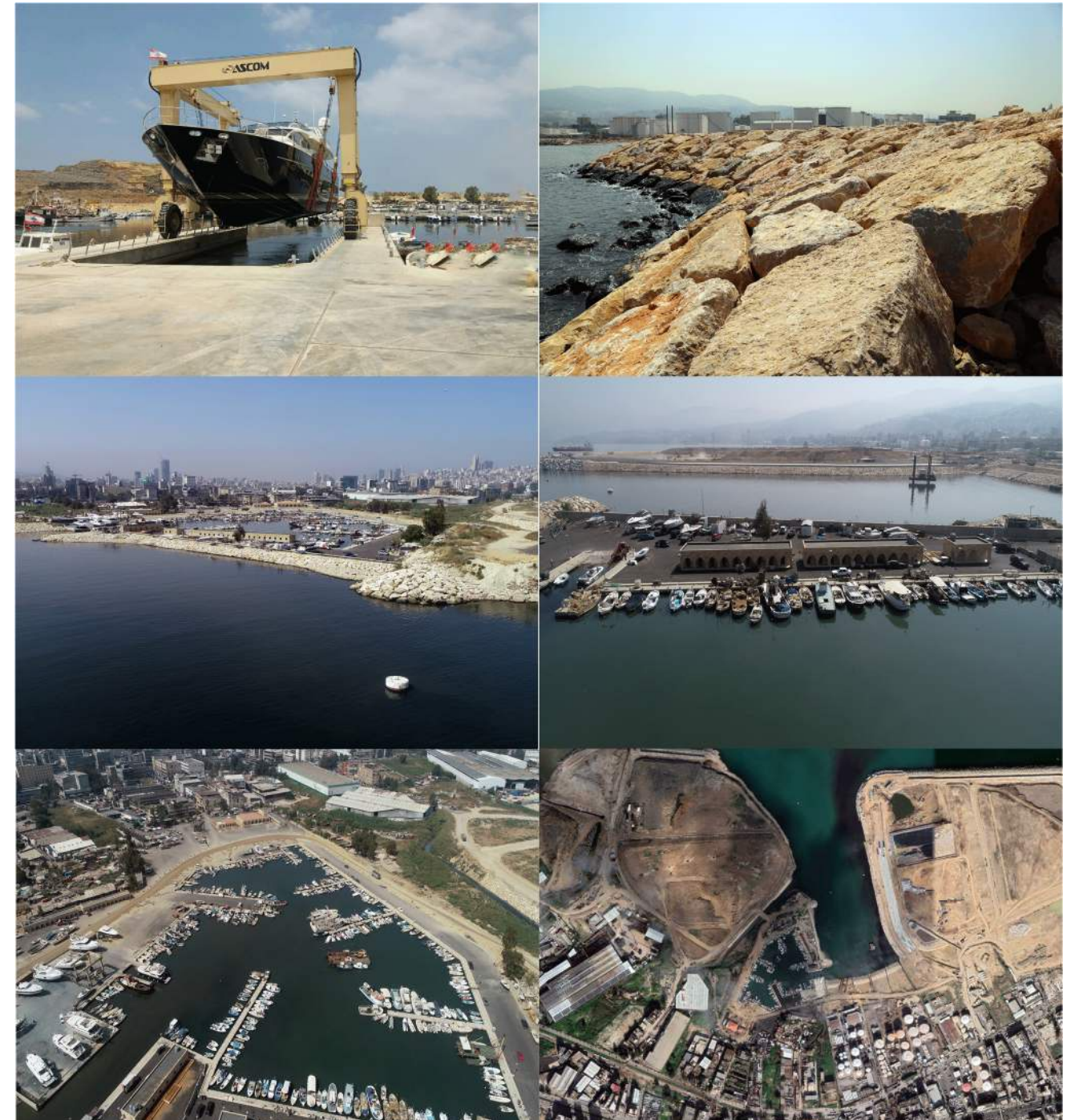
Ports / Fishing Ports / **Lift Structures** / **Slipways** / **Hoists** / Dredging / Surveying

Dora Fishing Port

- Fishermen syndicate building (204m²)
- Fish market (704m²)
- Stone cladding
- Waste water treatment plant
- Reclaimed platforms (52,460m²)
- Basin (31,220m²)
- Topographic survey (74,800m²)
- Bathymetric survey (55,300m²)
- Tender Documents / Drawings / BoQ

Year 2012 - 2019
Works Supervision

- Contractor : MARCONTRACTING
- Duration : 75 months



Ports / Fishing Ports / **Lift Structures** / **Slipways** / **Hoists** / Dredging / Surveying

DREDGING AND JIB CRANE AT NAQOURA FISHING PORT

22

Client LEBANESE REPUBLIC
Ministry of Public Works and Transport
Directorate General of Land and Maritime
Transport

Location LEBANON – Naqoura
33°7'35" N
35°8'40" E

Consultant SEATEC sarl

Dredging and jib crane at Naqoura Fishing Port

Year 2009
Design / Surveying

- Dredging of port basin (2,000m²) @-2.00m MSL
- Design and installation of a 5T lifting capacity jib crane for boats handling
- Topographic survey
- Bathymetric survey (2,000m²)
- Specifications / Drawings / BoQ

Year 2009
Works Supervision

- Contractor : MARCONTRACTING
- Duration : 3 months

Ports / Fishing Ports / **Lift Structures** / **Hoists** / Dredging / Surveying

