

# COMPANY PROFILE 2025



The sea \_\_\_\_\_ our responsibility

## ENVIRONMENTAL STUDIES

[www.seatec-sarl.com](http://www.seatec-sarl.com)

Copyright © 2025 SEATEC sarl. All rights reserved

- 
- I. [About us](#)
  - II. [Company History](#)
  - III. [Projects Location](#)
  - IV. [Get in Touch with Us](#)
  - V. [Company Vision](#)
  - VI. [Capacity of the Company](#)
  - VII. [Our Projects](#)
    - 1. [Container Terminals](#)
    - 2. [General Cargo Terminals](#)
    - 3. [Cruise Terminals](#)
    - 4. [Oil & gas Terminals](#)
    - 5. [Industrial Ports](#)
    - 6. [Grain terminals](#)
    - 7. [Marinas](#)
    - 8. [Fishing Ports](#)
    - 9. [Naval Bases](#)
    - 10. [Service Ports](#)
    - 11. [Waterfronts](#)
    - 12. [Coastal Protections](#)
    - 13. [Beaches](#)
    - 14. [Mooring structures](#)
    - 15. [Dredging](#)
    - 16. [Lift structures](#)
    - 17. [Sealines](#)
    - 18. [Environmental Studies](#)
  - VIII. [Our Clients](#)

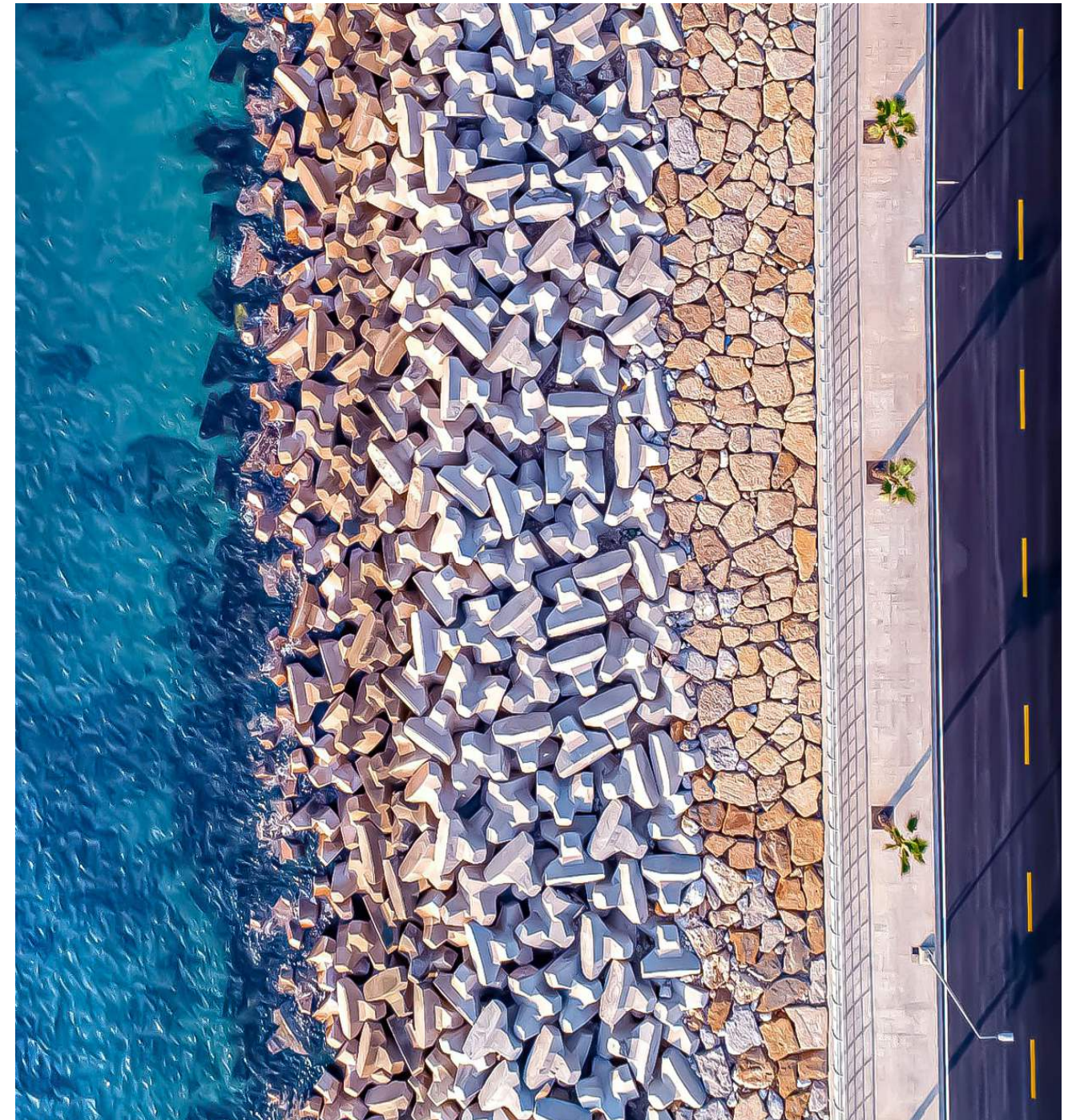
Press on Links to navigate to page

## SEATEC

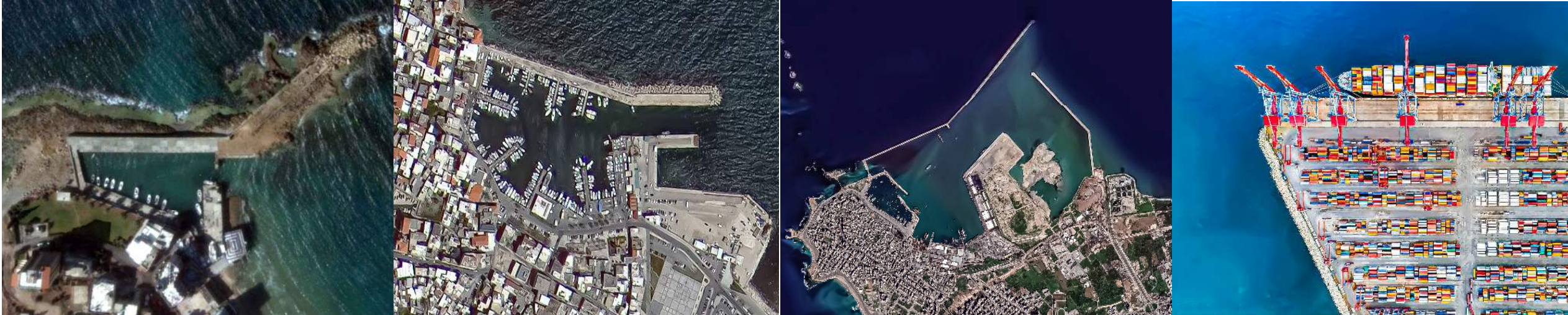
provides its clients with design and supervision services in coastal and port engineering, covering surveying, site investigation, master planning, numerical modeling, tender and detailed design, feasibility and EIA studies, permitting, construction planning, management and supervision.

Serving public as well as private sectors since 2000, SEATEC sarl is dedicated to give its clients the best engineering assistance.

SEATEC sarl operates in the EU territory through its subsidiary in Cyprus, S. SEATEC (Cyprus) Ltd.



# COMPANY HISTORY



# PROJECTS LOCATION



Countries <span style="color: red;">●</span>	
<b>Middle East</b>	<b>AFRICA</b>
Lebanon	Egypt
Jordan	Libya
Syria	Tunis
<b>GULF</b>	Algeria
UAE	Djibouti
KSA	Ivory Coast
Qatar	Cameroon
Oman	Nigeria
<b>ASIA</b>	<b>EUROPE</b>
India	Cyprus

## HEAD OFFICE

### SEATEC sarl

Beaini Center, 1st floor, Down Town,  
31 Ernest Renan St.,  
PC 4504 Byblos, LEBANON

Ph : +961 9 55 00 22  
Fax : +961 9 55 00 44  
Mob : +961 3 29 10 30  
Web : [www.seatec-sarl.com](http://www.seatec-sarl.com)  
E-mail : [seatec@seatec-sarl.com](mailto:seatec@seatec-sarl.com)

## SUBSIDIARY OFFICE

### S. SEATEC (CYPRUS) ltd

Michail Olympiou, 26 Dali,  
2540 Nicosia, CYPRUS



## VISION 01

### SUSTAINABLE ENGINEERING SOLUTIONS

*“Leading the way in creating sustainable and resilient engineering solutions that harmonize with nature and withstand the test of time”*



## VISION 02

### ECO-FRIENDLY AND GREEN PRACTICES

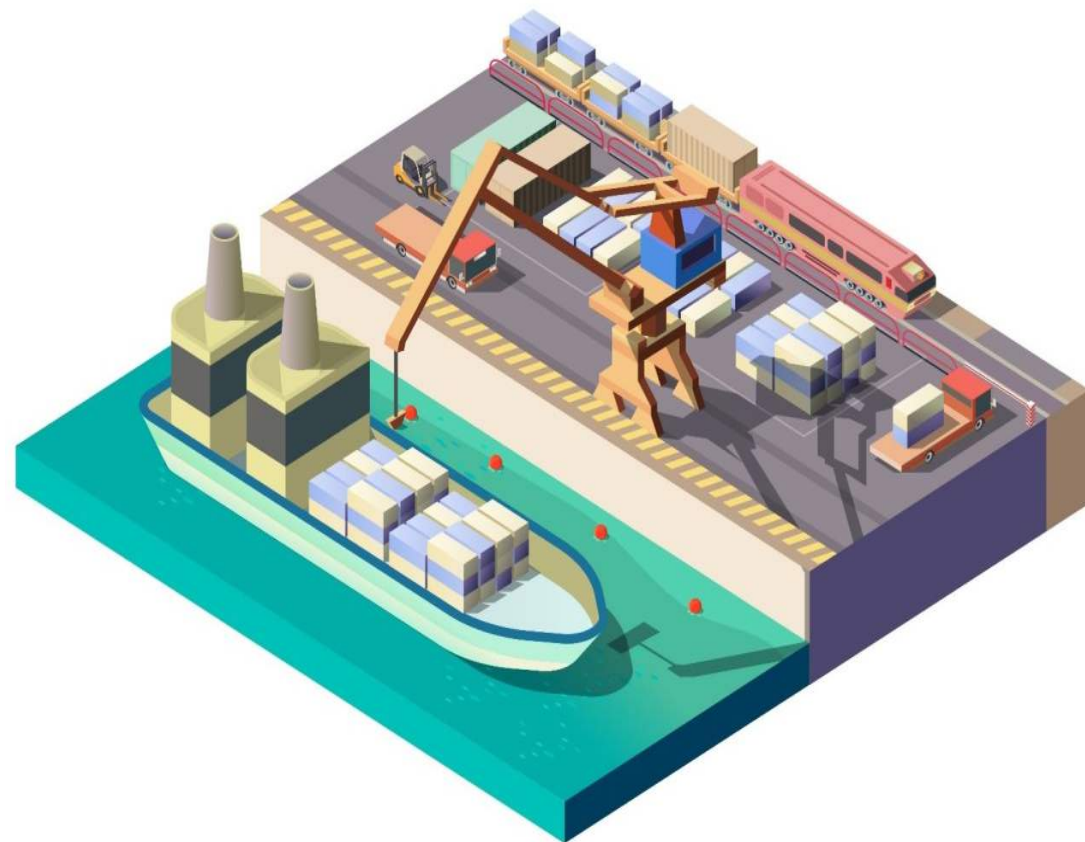
*“Pioneering eco-friendly and green solutions that preserve coastlines and promote a sustainable future for generations to come”*



## VISION 03

### SMART PORTS

*"Transforming ports into smart, efficient, and interconnected hubs that drive global trade and economic growth".*



## VISION 04

### INNOVATIVE COASTAL DEVELOPMENTS

*"Fostering innovative coastal developments that boost local economies and enhance the quality of life for coastal communities".*



## INTRO

### SERVICES

SEATEC sarl ([www.seatec-sarl.com](http://www.seatec-sarl.com)) is a multi-disciplinary engineering company, operating since 2000, mainly specialized in the design and supervision of coastal and ports projects, covering :

- Ports: commercial, cruise, marinas, fishing, industrial, naval bases...
- Specialized Terminals: Containers, general cargo, bulk, Agri bulk, oil and gas...
- Urban Waterfronts developments
- Coastal protections
- Dredging and reclamation works
- Beaches (protection and artificial nourishment)
- Offshore pipelines (outfalls, intake pipes...)
- Mooring structures, ship lifts
- Marine infra (Breakwaters, quay walls, platforms, slipways...)



## SERVICES

SEATEC offers a range of services through an experienced team in coastal and port engineering field :

- Site selection and evaluation
- Topographic and bathymetric survey
- Underwater inspection
- Rehabilitation of existing infrastructure
- Development of new infrastructure and facilities
- Master planning (future development) and phasing
- 3D presentations (views and videos)
- Feasibility studies
- Design optimization
- Design review /value engineering
- Preliminary and detailed design
- Execution drawings
- Numerical modelling
- Environmental Impact Assessment (EIA) studies
- Permitting and consents from relevant public authorities
- Tender documents
- Assistance to clients in selection of contractors



## SERVICES

- Supervision services, management and supervision of construction sites in accordance with health and safety guidelines, through an experienced team of site engineers, supervisors, surveyors and divers
- Supervising contractors, subcontractors and work activities
- Compliance of executed works with the relevant building regulations, quality standards
- Construction permit and with the specified technical documentation and guidelines
- Issuing of information and instructions on behalf of the client
- Validate of contractor's payments
- Hazards and risks assessment and Prevention of construction errors
- Carrying out regular inspections and raising safety concerns at the appropriate level
- Keeping construction on schedule, construction errors
- Completing records for site reports
- Resolving problems and implementing improvements
- Works handing over certificate



## OUR TEAM

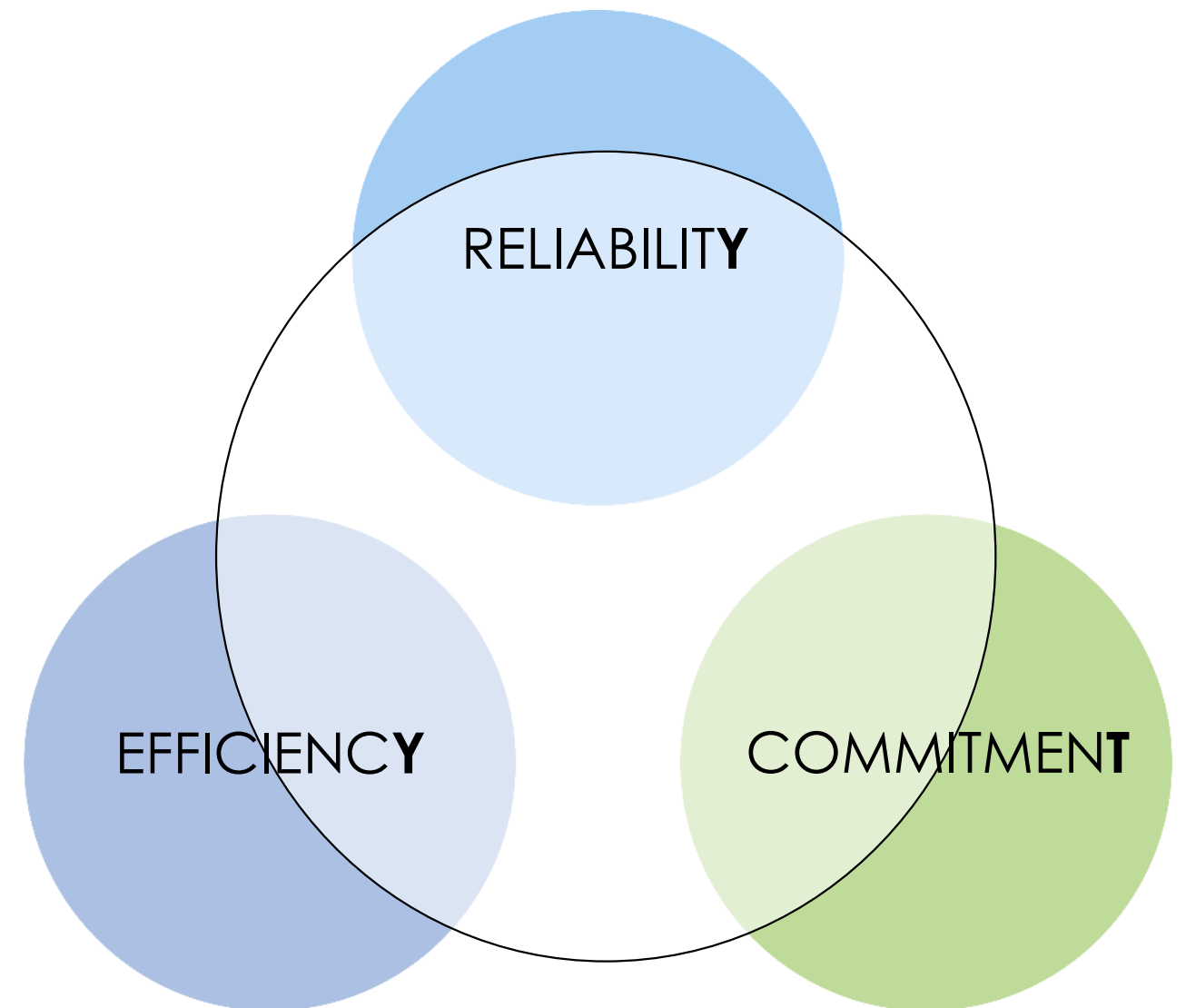
SEATEC have an experienced Team for in house design, covering all coastal and ports engineering aspects, geotechnical analysis, numerical modeling, works supervision..., keeping an excellent cooperation with leading European maritime and hydraulic laboratories for 2D/3D physical modeling.

A strong team spirit with the Client will be essential, working as part of a single entity rather than as competent individuals.

The team of experts is mostly composed of people involved in our recent projects, carefully selected for their:

- Experience in the field of expertise
- Efficiency
- Experience in working with each other
- Ability to advise both public and private Clients

Moreover, SEATEC can mobilize on short notice its technical resources when and where such expertise is needed.



## OUR NUMBERS



SINCE  
**2000**



COUNTRIES  
**+16**



CLIENTS  
**+50**



PROJECTS  
**+450**

## ENVIRONMENTAL STUDIES

An underwater photograph of a sea turtle swimming over a coral reef. The turtle is the central focus, with its head and front flippers visible. The water is clear and blue, and the coral reef is vibrant with various colors. A large, semi-transparent white graphic element, resembling a stylized 'S' or a curved line, is overlaid on the image, extending from the top left towards the bottom right.

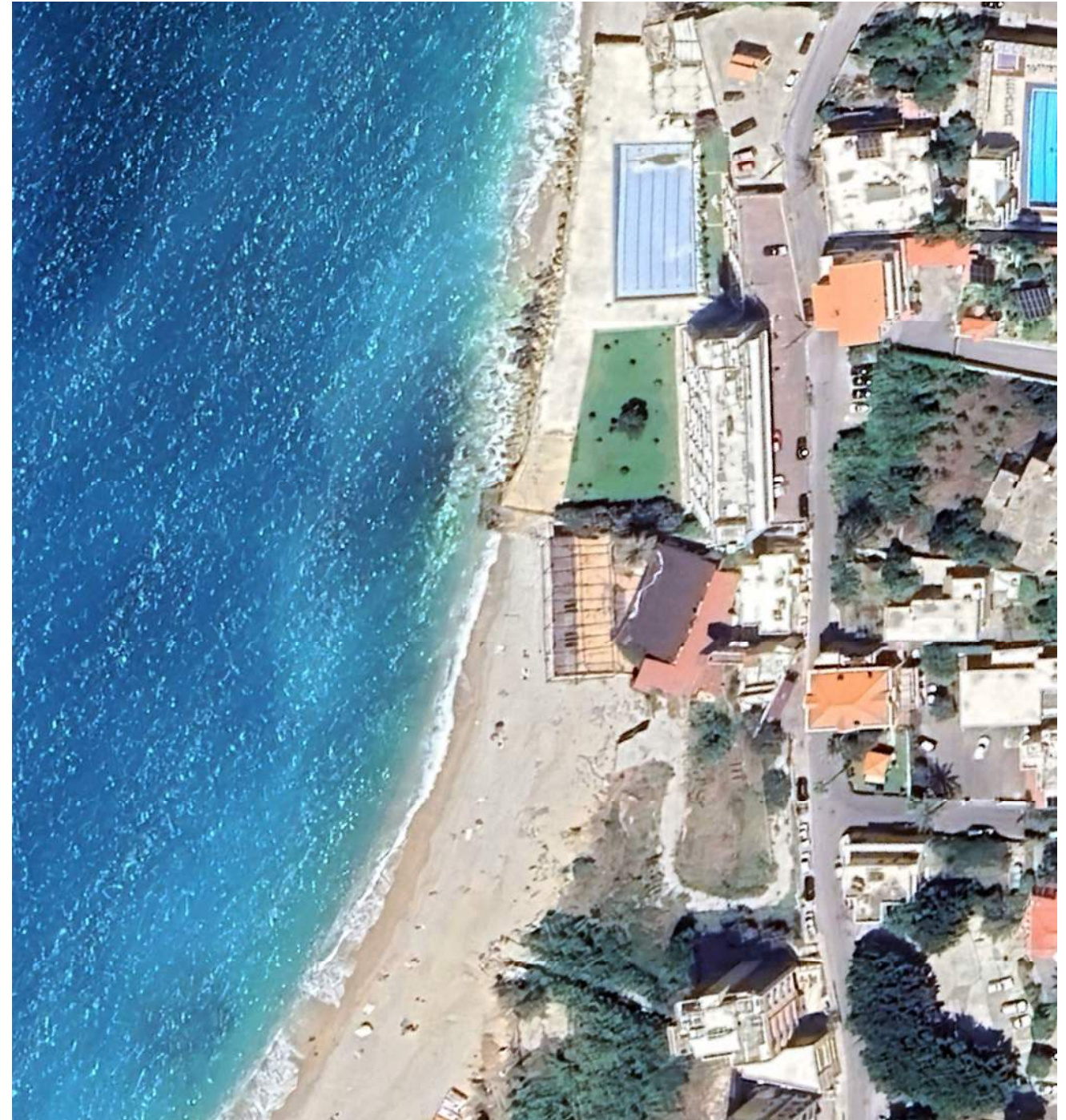
# EA PLOT 840

**Client** Owner Plot 840  
**Location** LEBANON – Byblos  
34°07'30"N  
35°38'37"E  
**Consultant** SEATEC sarl JV SES

## Environmental Audit (EA) Plot 840

**Year** 2024  
EA / Permitting

- Restaurant and related facilities
- EA study



*Enviro Studies / Permitting*

# IAPCO TERMINAL EIA

**Client** IAPCO sal  
**Location** LEBANON – Selaata  
34°17'10" N  
35°39'53" E  
**Consultant** SEATEC sarl JV SES

## IAPCO Terminal

**Year** 2024  
EIA / Permitting

- IAPCO Environmental Impact Assessment (EIA)
- Offshore pipeline (L=311m) for fuel/oil products
- Land reclamation with RC seawall protection
- Tanks and related buildings / facilities
- EIA study (SEATEC JV SES)

Ports / Oil & Gas Terminals / **Sealines** / **Offshore Pipelines** / Coastal Protections / Seawalls / Mooring Structures / CBM / Surveying / Permitting / Enviro Studies



# COASTAL PROTECTION PLOT 128

**Client** Owner Plot 128  
**Location** LEBANON - Beddawi  
34°27'22" N  
35°51'34" E  
**Consultant** SEATEC sarl JV SES

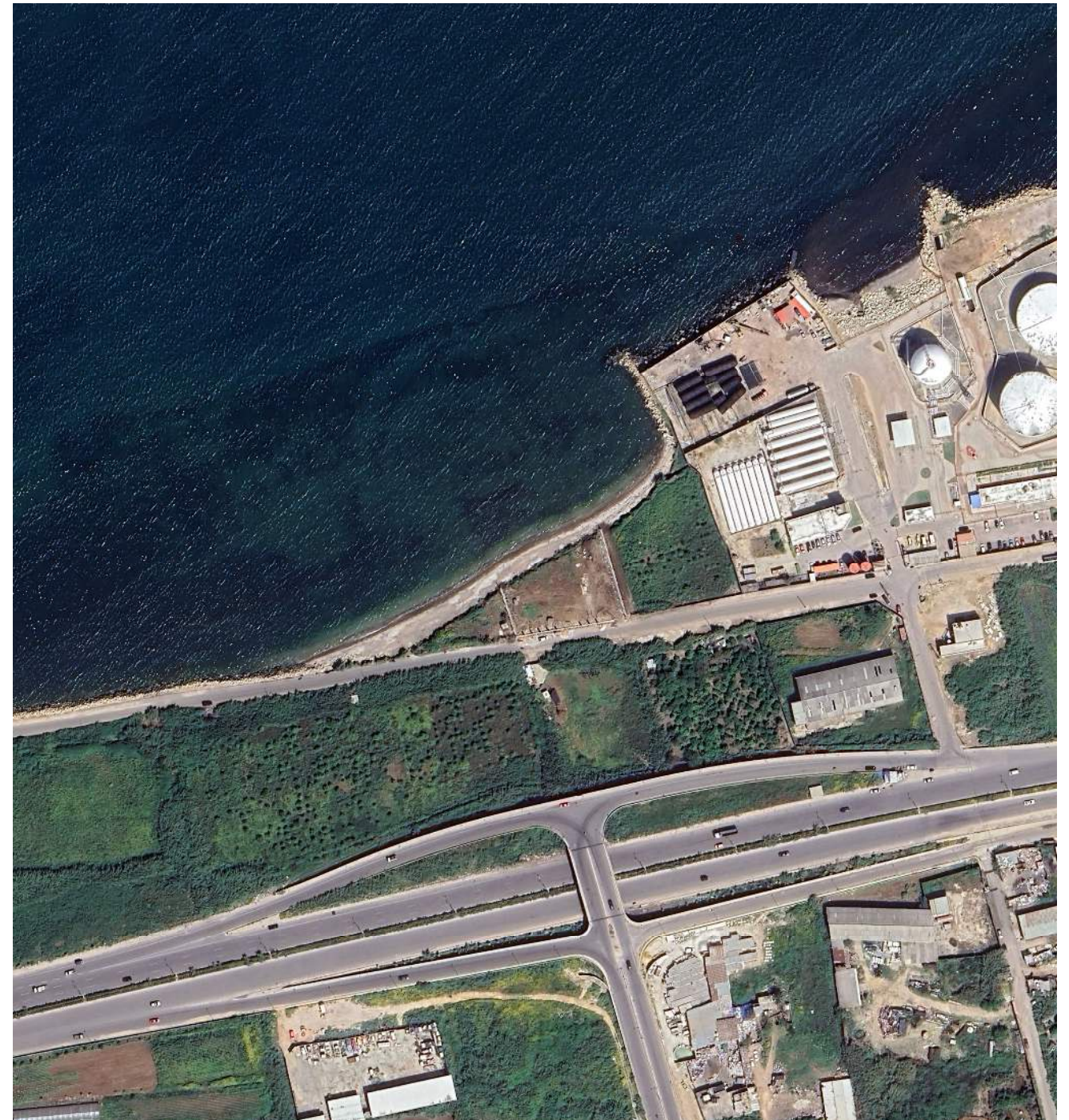
## Coastal protection Plot 128

**Year** 2023  
Design / Permitting

- Rocky coastal protection (L~53m)
- Reclamation of the Plot eroded area
- Technical Specifications / Drawings / BoQ / Permitting

**Year** 2024  
EA (SEATEC JV SES)

- Environmental Audit study



Coastal Protections / Revetments / **Enviro Studies** / Permitting

# BASSIL GAS STATION

**Client** Bassil  
**Location** LEBANON - Halat  
34°06'02"N  
35°39'11"E  
**Consultant** SEATEC sarl JV SES

## Bassil gas station

**Year** 2019 - 2020  
EMP / Permitting

- Environmental Management Plan (EMP) for the gas station



*Enviro Studies / Permitting*

**Client** IPT (Issa Petroleum trade)

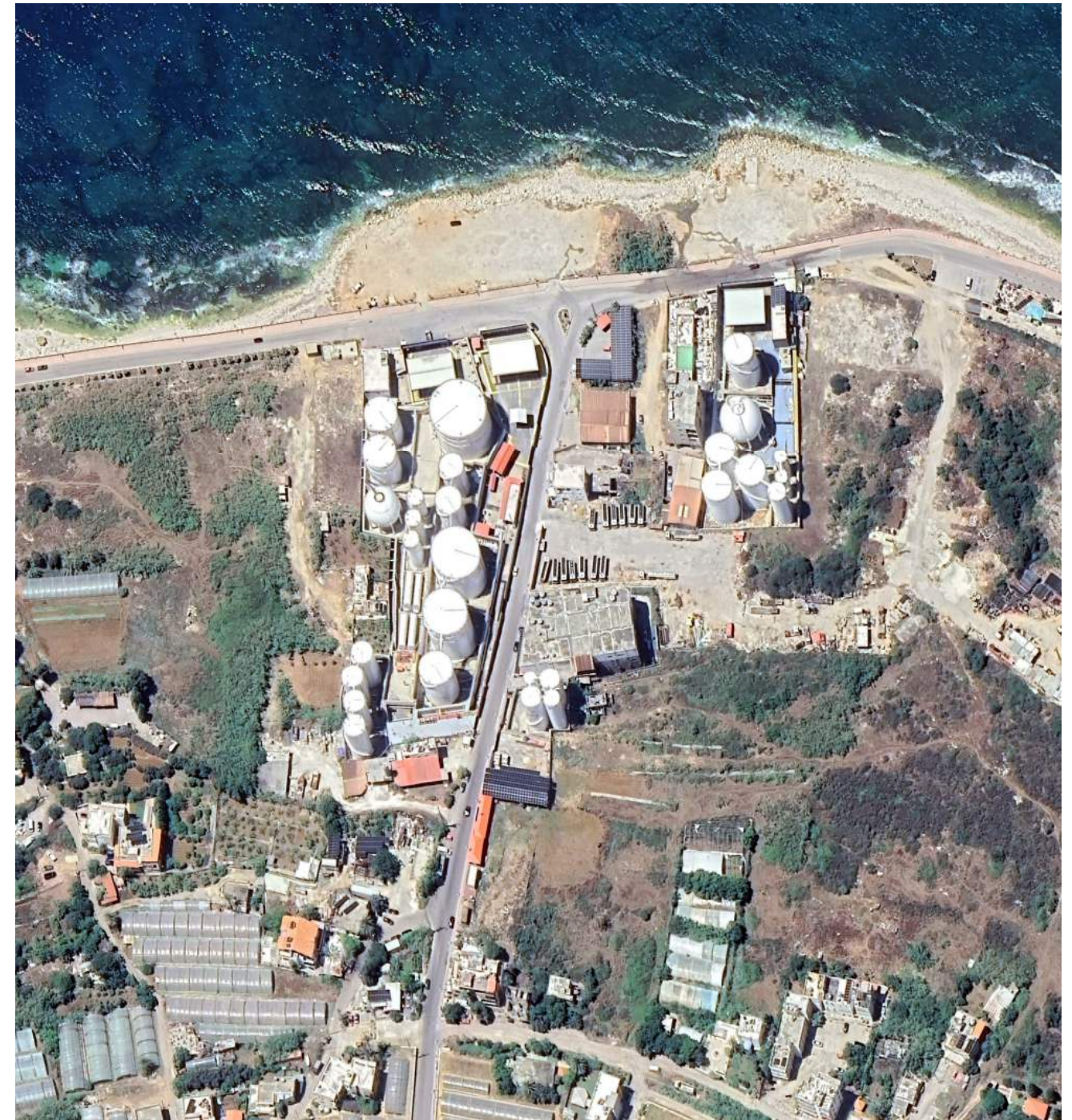
**Location** LEBANON – Amchit  
34°08'27" N  
35°37'44" E

**Consultant** SEATEC sarl JV SES

## IPT Terminal EIA

**Year** 2019 – 2020  
EIA

- Environmental Audit study for the sealine and the reclaimed area in the maritime public domain
- Environmental Audit study for the IPT Terminal



Ports / Oil & Gas Terminals / **Enviro Studies**

**Client**           LEBANON ENERGY srl

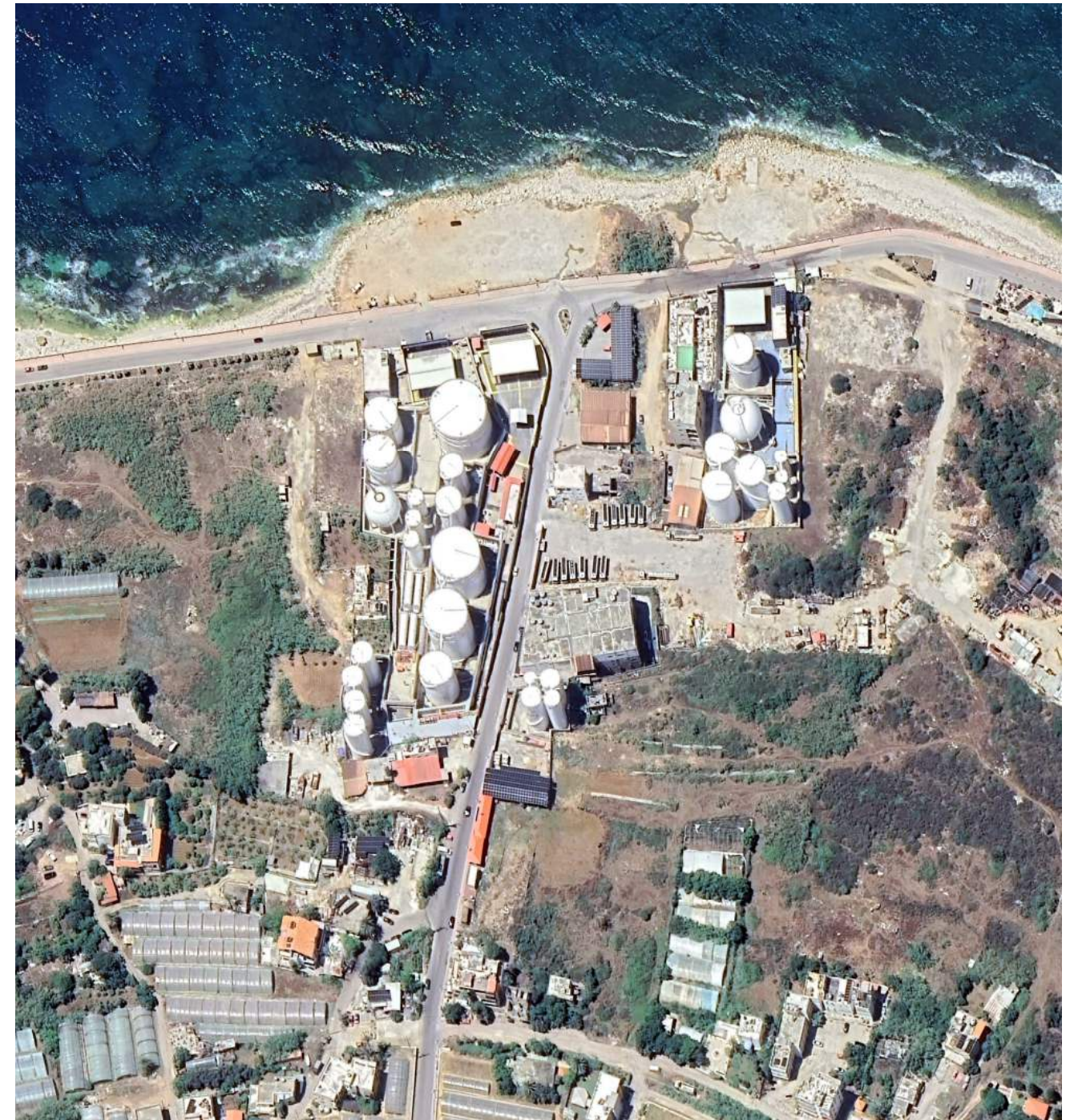
**Location**       LEBANON – Amchit  
34°08'27" N  
35°37'44" E

**Consultant**   SEATEC srl JV SES

## LEBANON ENERGY Terminal EIA

**Year**            2019 – 2020  
EIA

- Environmental Audit study for the sealine and the reclaimed area in the maritime public domain
- Environmental Audit study for the LEBANON ENERGY Terminal



Ports / Oil & Gas Terminals / **Enviro Studies**

# BELLE MER RESORT

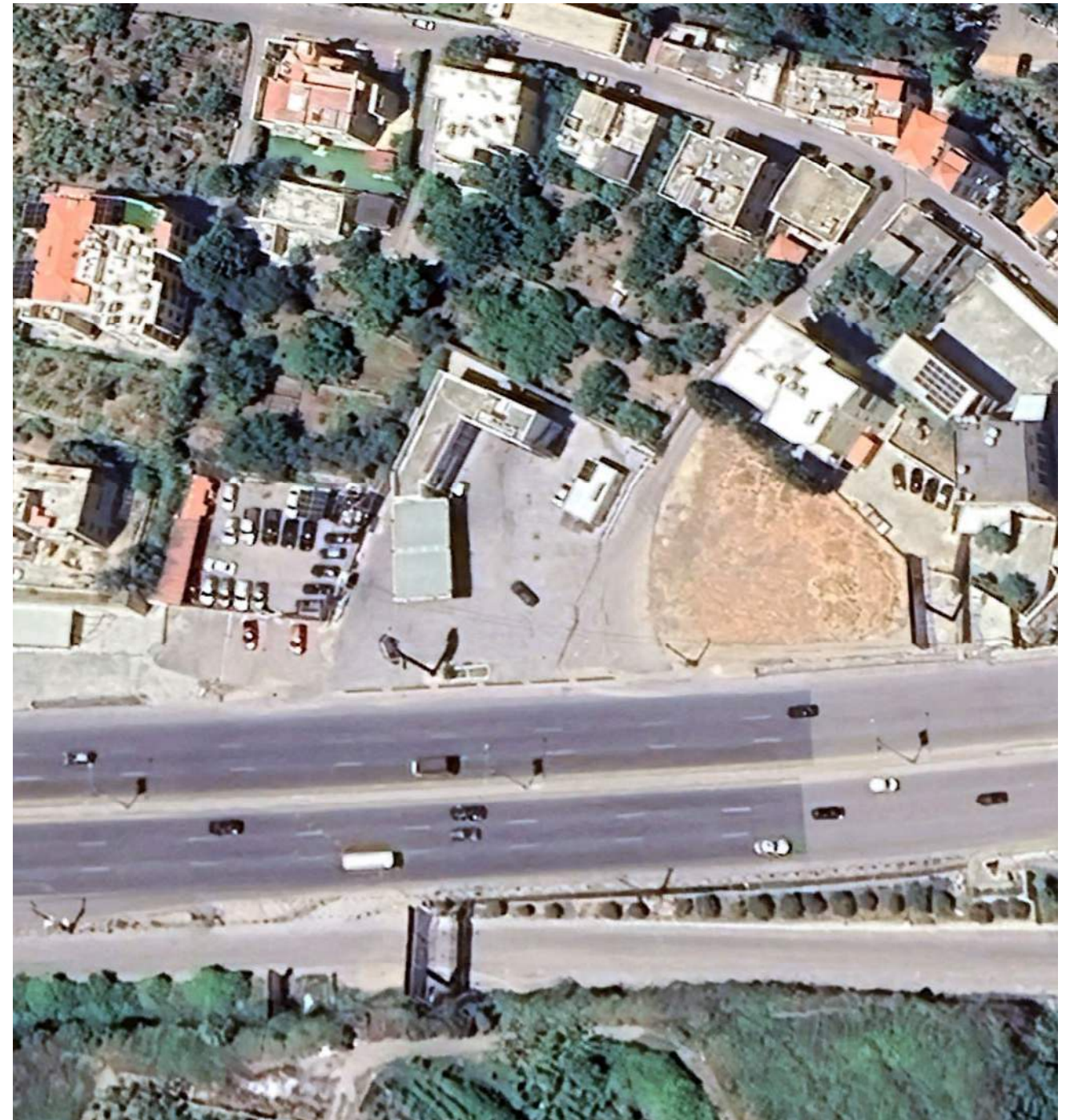
20

**Client** Belle Mer Resort  
**Location** LEBANON – Nahr Ibrahim  
34°03'40"N  
35°38'35"E  
**Consultant** SEATEC sarl JV SES

## Belle mer resort

**Year** 2019 – 2020 – 2021  
EA / Permitting

- Environmental Audit for the whole resort and for the infrastructures constructed on the public maritime domain (SEATEC JV SES)
- Permitting



*Enviro Studies / Permitting*

# NAJI BEACH RESORT - 1

**Client** NAJI BEACH Resort  
**Location** LEBANON - Tripoli  
34°24'35"N  
35°49'04"E  
**Consultant** SEATEC sarl JV SES

## Naji Beach Resort - 1

**Year** 2019  
EA / Permitting

- Environmental Audit for the whole resort and for the infrastructures constructed on the public maritime domain
- Permitting



*Enviro Studies / Permitting*

**Client** LEBANESE REPUBLIC  
Ministry of Public Works and Transport  
Directorate General of Land and Maritime Transport

**Location** LEBANON – Anfeh  
34°21'54" N  
35°44'15" E

**Consultant** SEATEC sarl

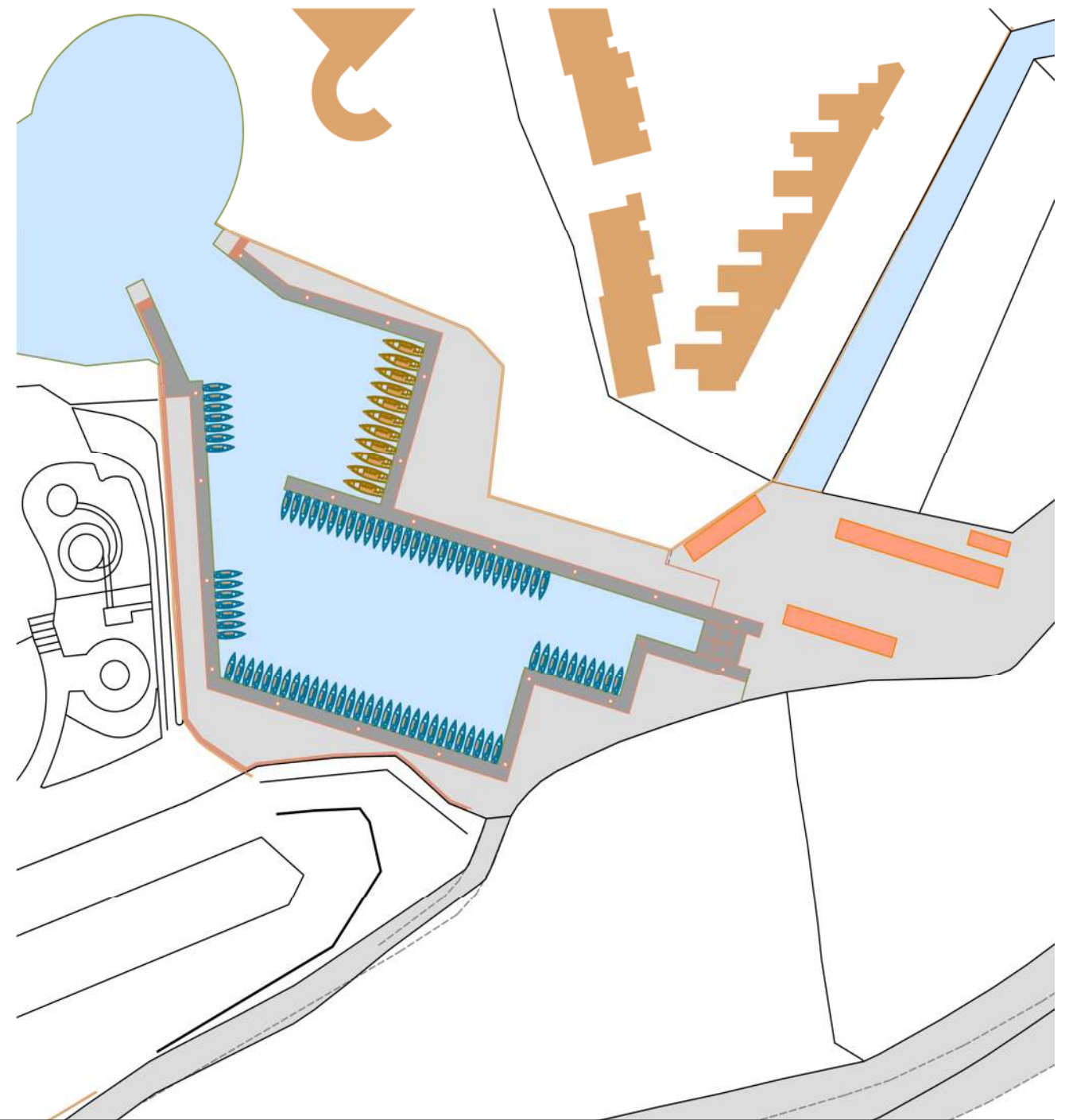
## Anfeh Fishing Port

**Year** 2017  
Conceptual Design

**Year** 2019  
Design / Surveying

- Rehabilitation of the old existing port
- Master Plan
- Berthing capacity (100 boats)
- Main Breakwater (Vertical concrete type, L=20m @max - 2.00m MSL)
- Quaywalls (L=360m @-2.50m MSL) / Underwater concrete blocks (Gravity QW)

Ports / Fishing Ports / Lift Structures / Slipways / Dredging / **Enviro Studies** / Surveying / Permitting



## Anfeh Fishing Port

- RC and bituminous platforms (5000m<sup>2</sup>)
- Infrastructure (Electrical supply, pipes, manholes, lighting poles)
- Infrastructure (Water supply, stormwater drainage, river culvert, pumps, pipes, manholes, tanks)
- Marine accessories (Mooring bollards, fenders)
- Waste water treatment plant
- Basin dredging @ -2.50m MSL
- Slipway (Boats ramp)
- 23 Fishermen rooms, 1 check point (room), 1 MPWT / DGLMT room (235m<sup>2</sup>)
- Reclaimed area (5,000m<sup>2</sup>)
- Water body (3,875m<sup>2</sup>)
- Topographic survey (29,900m<sup>2</sup>)
- Bathymetric survey (4,330m<sup>2</sup>)
- Tender Documents / Drawings / BoQ / Permitting

### EIA / Permitting

- Environmental Impact Assessment study (SEATEC JV SES)

### Works Supervision

- Contractor : Ste. Antoine Makhoul for Trading and Contracting sal
- Duration : 24 months

Ports / Fishing Ports / Lift Structures / Slipways / Dredging / **Enviro Studies** / Surveying / Permitting



# JOUNIEH CRUISE PORT (1/3)

24

**Client** LEBANESE REPUBLIC  
Ministry of Public Works and Transport  
Directorate General of Land and Maritime Transport

**Location** LEBANON – Jounieh  
33°59'02" N  
35°36'49" E

**Consultant** SEATEC sarl

## Jounieh Cruise Port

**Year** 2016  
Design / Surveying / EIA

Cruise Port for post panamax ships (LOA~360m / 220,000DWT / 4000 passengers

- Port Master Plan
- Main Breakwater (Rubble mound type, L=2155m @max -24.00m, core material, rocky filter and 4,6,9 and 12m<sup>3</sup> concrete Accropodes blocks Type II)
- Secondary Breakwater (Rubble mound type, L=400m @max -16.00m, core material, rocky filter and 4,6 and 9m<sup>3</sup> concrete Accropodes blocks Type II)
- RC Crown walls

Ports / Surveying / Permitting / Cruise Terminals / Marinas / **Enviro Studies** / Lift Structures / Slipways / Hoists



## Jounieh Cruise Port

- Quaywall (L=550m @-12.00m MSL) / Precast concrete blocks (Gravity QW) for mega cruise ships
- Quaywall (L=440m @-12.00m MSL) / Precast concrete blocks (Gravity QW) for passenger ships

### Western marina (342 berths)

- Quaywalls (L=902m @-3.00m MSL) / Precast concrete blocks (Gravity QW)
- Quaywalls (L=236m @-5.50m MSL) / Precast concrete blocks (Gravity QW)
- Finger Piers (L=675m @-3.00m MSL, Nbr 7) / Precast concrete elements

### Eastern Marina (90 berths + 2 mega yachts berths 100m+)

- Quaywalls (L=812m @-5.50m MSL) / Precast concrete blocks (Gravity QW)
- Quaywalls (L=228m @-7.00m MSL) / Precast concrete blocks (Gravity QW) for mega yachts (LOA~100m+)
- Finger Piers (L=145m @-5.50m MSL, Nbr 2) / Precast concrete elements

### Port infrastructure

- Slipways (Nbr 2)
- Hoist / Boats lift

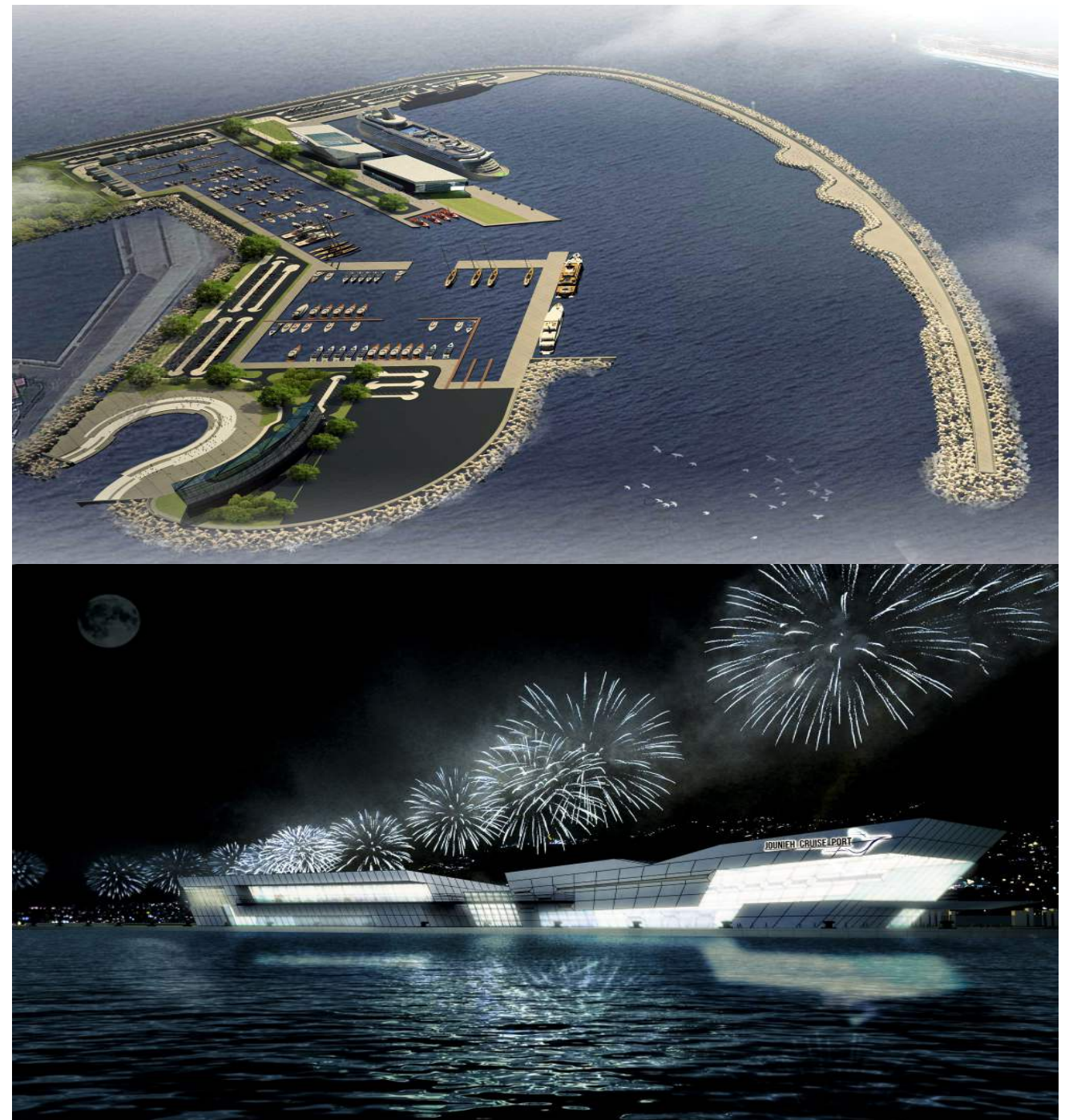
Ports / Surveying / Permitting / Cruise Terminals / Marinas / **Enviro Studies** / Lift Structures / Slipways / Hoists



## Jounieh Cruise Port

- Marine accessories (Mooring bollards, fenders)
- Bituminous / RC Platforms (163,000m<sup>2</sup>)
- Infrastructure (Electrical supply, pipes, manholes, lighting poles)
- Infrastructure (Water supply, Pumps, pipes, manholes, tanks)
- Fueling station
- Bus and cars parking, internal roads
- Aids to Navigation (ATON / Buoys and day marks)
- Landscape
- Cruise Terminal (38,000m<sup>2</sup>, 2 floors)
- Marina master, restaurants, offices, shops (13,500m<sup>2</sup>)
- Waste water treatment Plant
- Reclaimed area (421,150m<sup>2</sup>)
- Water body of the cruise port (469,820m<sup>2</sup>)
- Water body of Western marina (77,120m<sup>2</sup>)
- Water body of Eastern marina (43,000m<sup>2</sup>)
- Topographic survey (58,000m<sup>2</sup>)
- Bathymetric survey (7,000,000m<sup>2</sup>)
- Offshore / onshore geotechnical investigation
- 2D / 3D physical modeling
- Simulation of vessel navigation
- EIA and approval of the Ministry of Environment (SEATEC sarl JV SES)
- Specifications / Drawings / BoQ / Permitting / EIA

Ports / Surveying / Permitting / Cruise Terminals / Marinas / **Enviro Studies** / Lift Structures / Slipways / Hoists



# COASTAL PROTECTION PLOTS 92 – 229

27

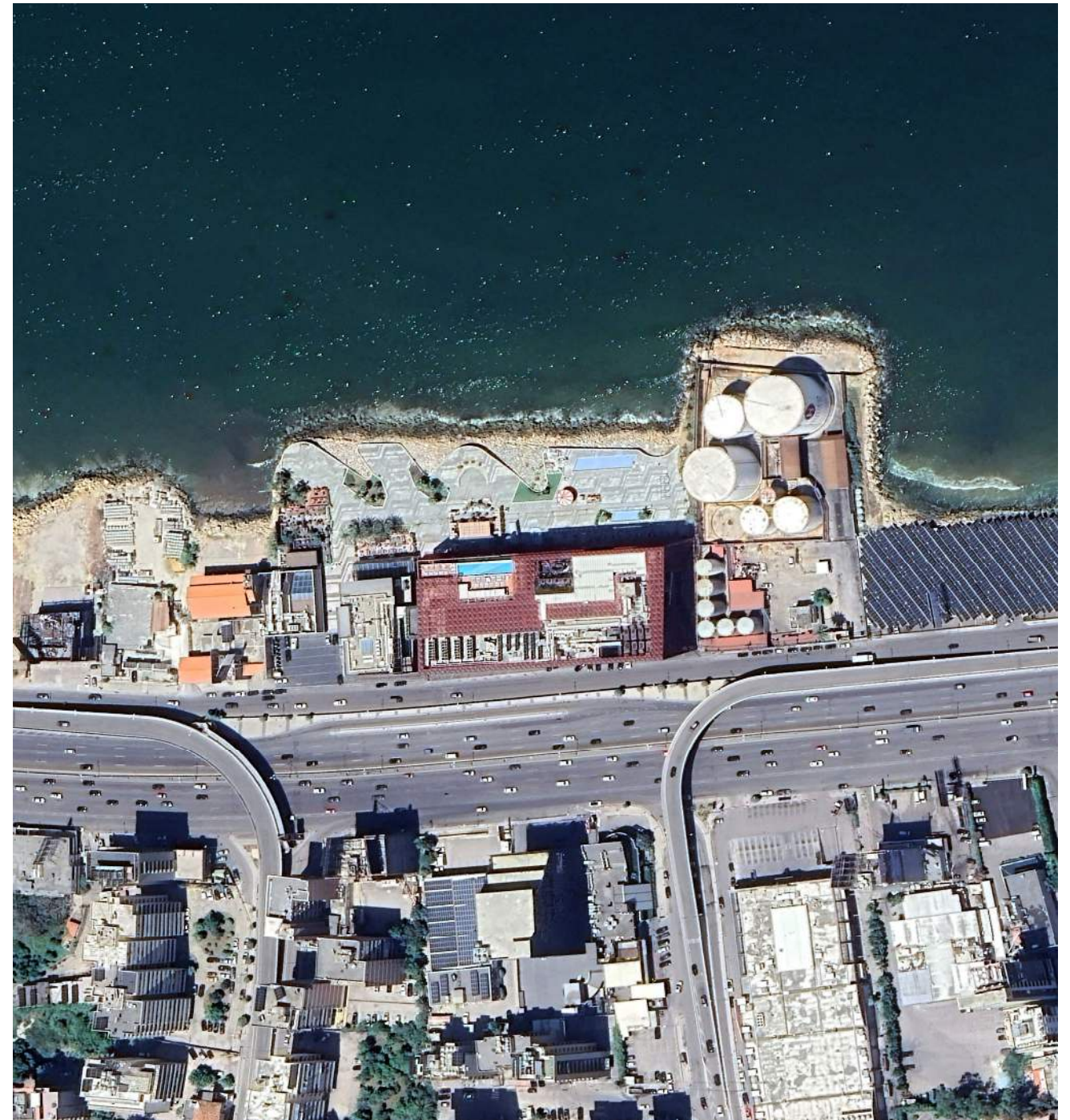
**Client** Owner Plots 92 – 229  
**Location** LEBANON – Antelias / Jal el Dib  
33°54'41"N  
35°34'45"E  
**Consultant** SEATEC sarl

## Coastal protection for Plots 92 – 229

**Year** 2012 – 2013 – 2014 – 2015 – 2018  
Design / Surveying / Permitting

- Sloped rocky riprap (L~141m)
- Topographic survey
- Drawings / Permitting

**Year** 2018 – 2019  
• Environmental Audit (EA) for the maritime domain occupancy (SEATEC JV SES)



Coastal Protections / Revetments / **Enviro Studies** / Surveying / Permitting